

Tribal Wetland Programs to Protect, Restore, and Manage Wetlands and Aquatic Ecosystems - EPA Region 10 Highlights

September 23, 2021

Virtual Tribal Wetlands Workshop

**Linda Storm, Aquatic Ecologist and ESTP Regional Tribal Lead, U.S.
Environmental Protection Agency,
Region 10 (AK, ID, OR, WA)**



EPA Region 10 National Collaborations to Support Tribal Wetland Programs

- ▶ **EPA R10 Partnership with Association of State & Tribal Wetland Managers (ASWM) for Tribal Training**
 - ▶ **1st Webinar: November 6, 2018** - *Cultural Values Based Planning for Integrated Wetland Management on a Watershed or Reservation Scale*
 - ▶ **2nd Webinar: June 25, 2019** - *Balancing Tribal Economic Development, Sustainable Cultural Uses and Wetland/Aquatic Resource Protection and Restoration*
 - ▶ **3rd Webinar: December 1, 2020** - *Advancing Tribal Wetland Programs Through Innovations in Monitoring & Assessment*
 - ▶ **4th Webinar: TBD** – *Tribal Wetland Monitoring and Assessment (Beyond Mapping/Level 1)*
- ▶ **EPA Region 10 Partnership with EPA HQs, and Tribal Roundtable to Develop a National Tribal Wetland Program Plan Guide (Supplement to the AWSM WPP Handbook)**
 - ▶ **Contract with Lucy Moore Associates and the Consensus Building Institute**
 - ▶ **Tribal Roundtable members from 15 Tribes from across the nation**
- ▶ **Competitive Wetland Program Development Grants/CWA Section 104 Funding**
 - ▶ National “Tribal-Set-Aside” Tribes Only – 2020 EPA HQs received 44 applications for 7.5 million; 20 for 3.0 million to be awarded; **7 EPA R10 Tribes received awards**
 - ▶ Regional competition for States and Tribes – 2021 Region 10 RFA – 6 of 9 applications to be awarded, **2 tribes**

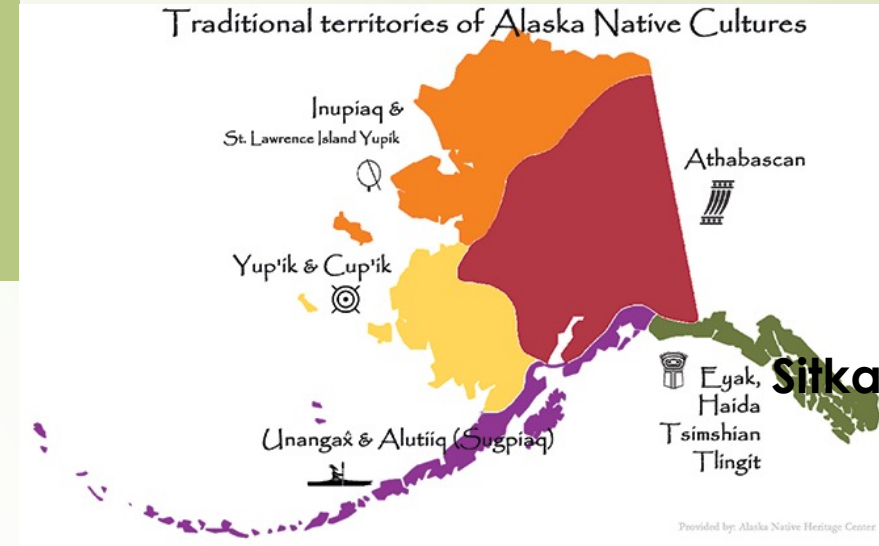


EPA Region 10 Tribal Partnerships: Assisting Tribes with Wetland Program Development in the Pacific Northwest (AK, ID, OR, WA)

- ▶ EPA R10 partners with tribes by providing Wetland Program Development Grant (WPDG) funding and technical assistance
- ▶ EPA R10 funding and partnership support for the Tribal Wetland working Group (**TWIG**) for over 11 years (since 2010)
 - ▶ *Tribally Lead Peer-to-Peer Network – tech transfer between tribes*
 - ▶ *Trainings and Workshops – tribes polled for priorities*
 - ▶ *Assistance to other tribes to help develop stronger WPDGs and WPPs*
 - ▶ *Website – gets the word out on many topics*
 - ▶ *TWIG expanding to provide cross-regional support to other tribal networks*
- ▶ Over 21 Tribes in Region 10 have developed or are developing Wetland Program Plans (ranging from 3-6 years)

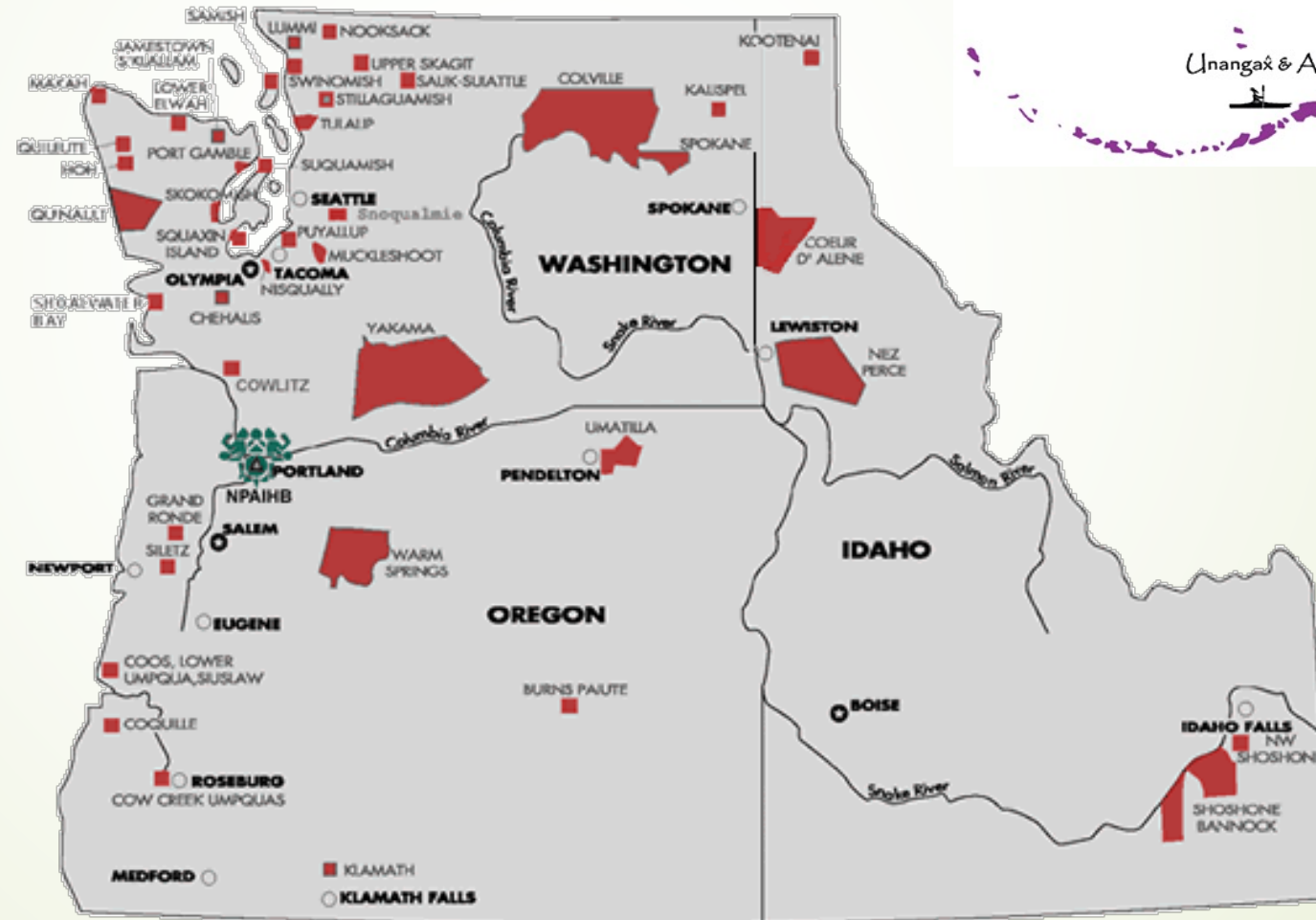
<https://www.epa.gov/wetlands/developing-state-or-tribal-wetland-program-plan>

Of the 574 Federally Recognized Tribes in the U.S., 271 are in EPA's Region 10 (of which 229 are in Alaska)



Some of the 21 Tribes in R10 with Wetland Programs or Past WPDGs

- Chugach
- Cowlitz
- Coeur d'Alene Tribe
- Colville Confederated Tribes
- Kalispel
- Quinault Indian Nation
- Port Gamble S'Klallam
- Nez Perce Tribe
- Snoqualmie (TWIG Lead)
- Siletz
- Sitka
- Stillaguamish Tribe
- Swinomish
- Tulalip Tribes
- Umatilla
- Yakama

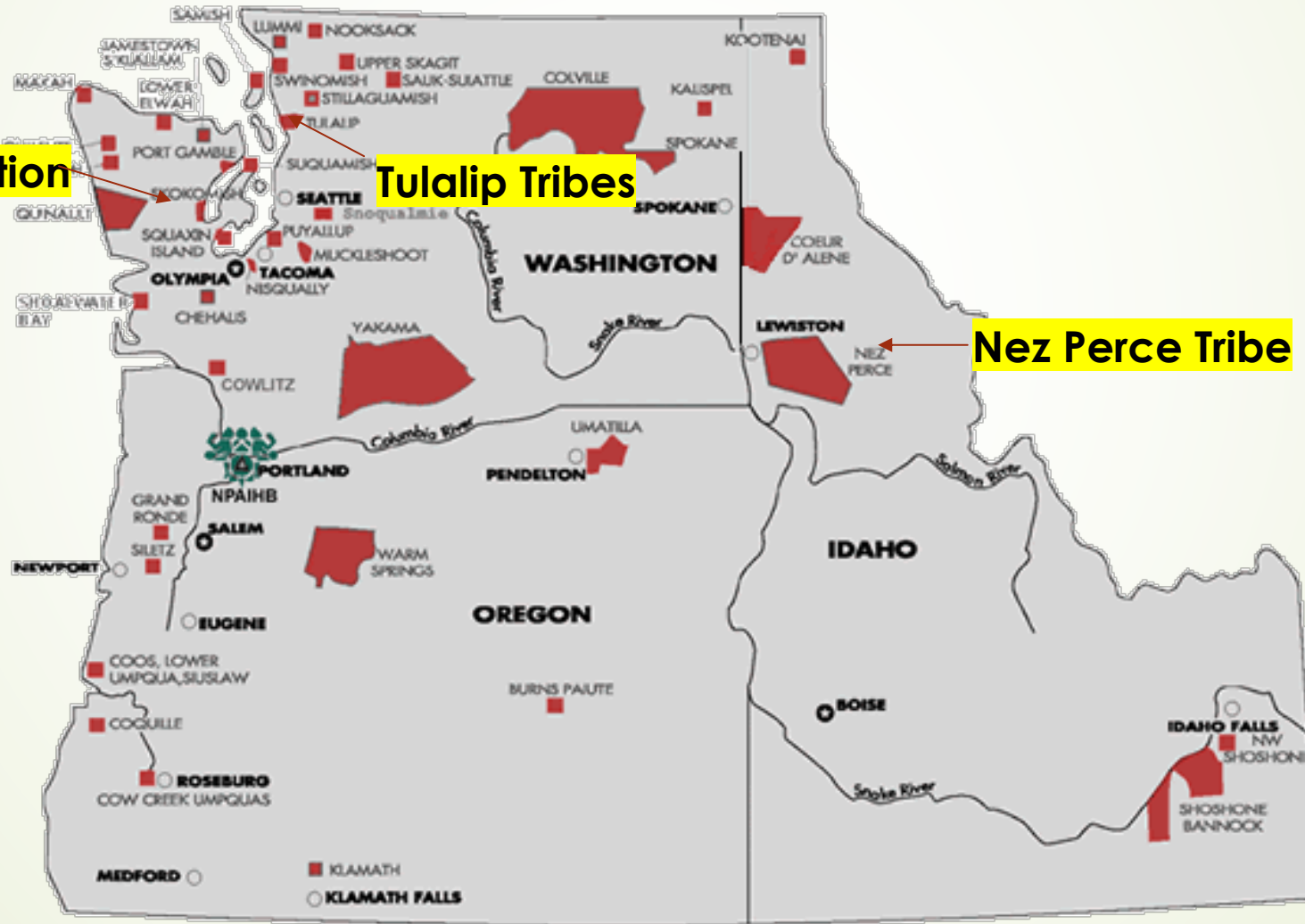


Highlighted: Pacific NW Tribal Wetland Programs

Quinault Indian Nation

Tulalip Tribes

Nez Perce Tribe



Quinault Indian Nation's Wetland Program

► **Monitoring and Assessment Program**

- Level 1: Updated NWI Wetland Inventory
- Level 2: Rapid Assessment Protocol + Cultural Species Checklist

► **Voluntary Protection and Restoration**

- Quinault Ethnobotany Guidebook
- Moses Prairie case study – returning fire
- Development of Wetland Prairie Management Plans

► **Regulatory Program and Water Quality Standards for Wetlands**

- **Treatment as a State for Water Quality Standards and 401 Certification**
In 2018; Draft submittal of WQS in 2020

QIN Contacts:

Greg Eide, greg.eide@quinault.org
360-276-8211 ext. 7341

Janice Martin, Wetland
Specialist, Janice.martin@quinault.org
360-276-8215 ext. 7342



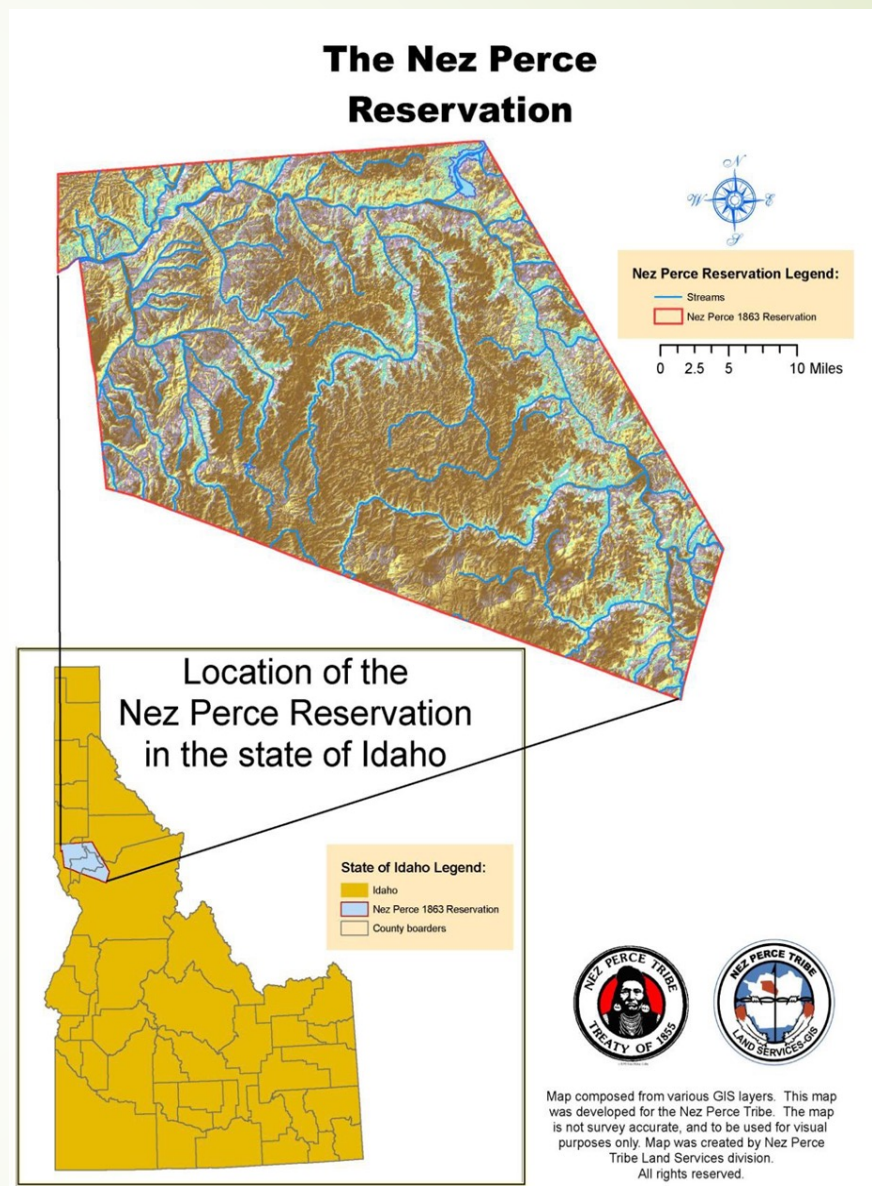
Nez Perce Tribe's Wetland Program

- The Nez Perce tribe has received multiple WPDGs since 1995 and has a robust monitoring program
- In 2011 they developed their first Wetland Program Plan for 2012-2017 addressing all 4 Core Elements
- In 2019 they updated and revised their WPP for 2020-2025, includes M&A, VP&R, Regulatory and Education/Outreach core elements

Nez Perce Contacts:

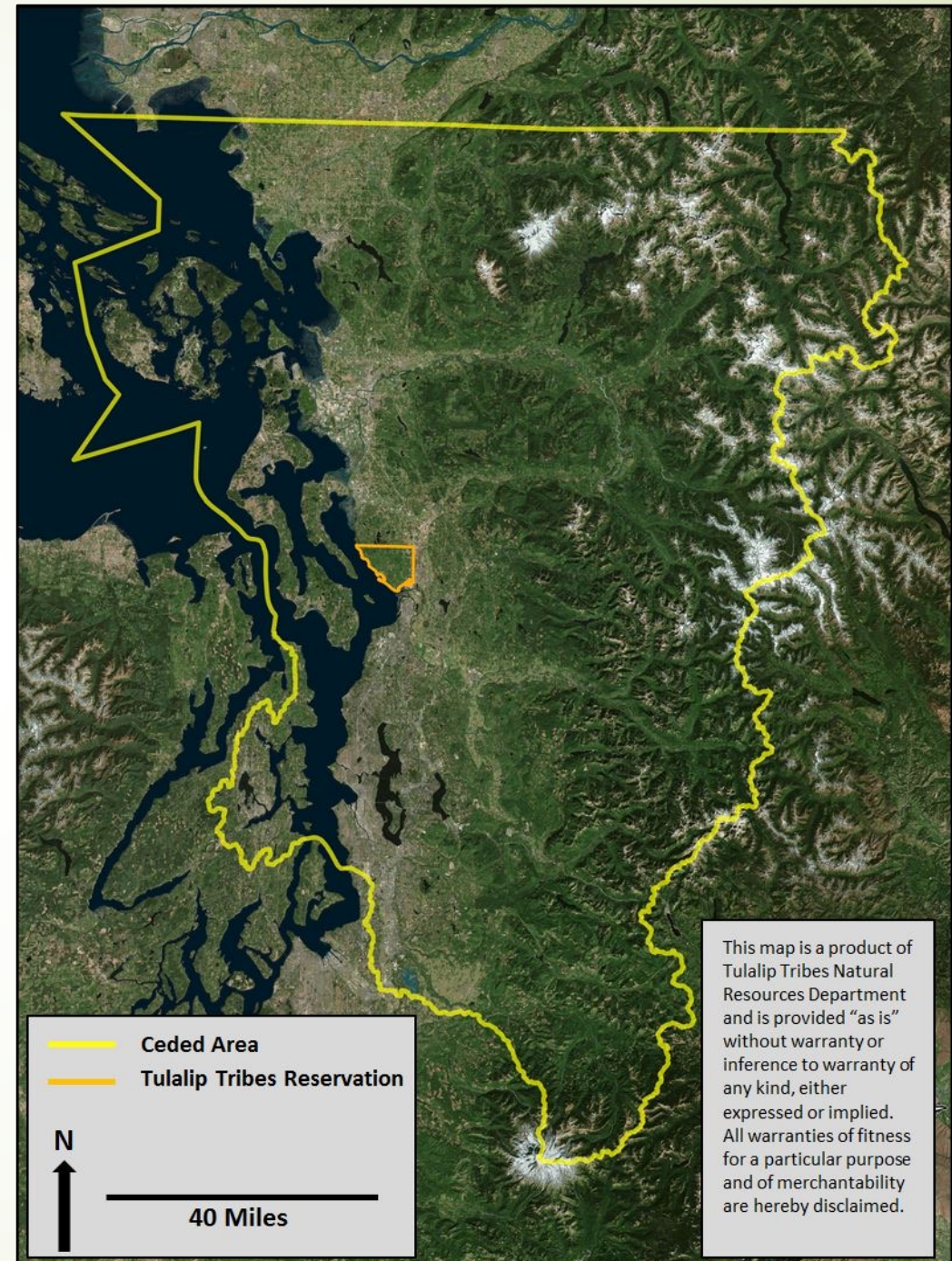
Rue Hewett Hoover, Wetland Specialist, rueh@nezperce.org, 208-843-7368;

Ken Clark, Director, Water Resources Division, kenc@nezperce.org, 208-843-7368



Tulalip Tribes Wetland Program

- **Monitoring and Assessment**
 - Level 1 – Landscape Level: Updated Wetland Inventory and Mapping
 - Level 2 – Rapid Assessment Protocols:
 - adapted/ revised Oregon's Rapid Wetland Assessment Method
 - added Cultural Significant Checklist
 - Level 3 – Quantitative Data Collection: Plants, Soils, Hydrology, Water Quality
 - Detailed Cultural Values Assessment Protocol
- **Voluntary Protection and Restoration**
 - Multiple Approaches and Education Programs that address tribal TEK/W
- **Regulatory Program Development**
- **Water Quality Standards for Wetlands**



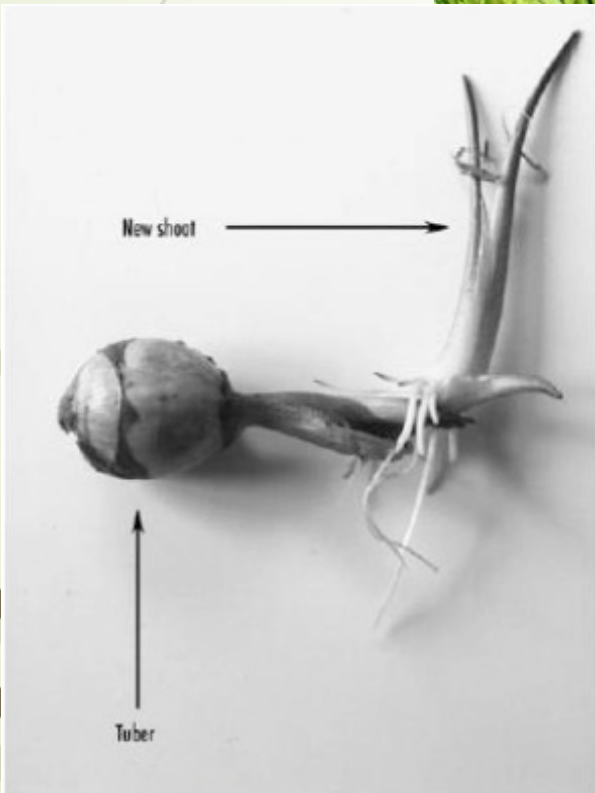
Priority Wetland Places to Protect: Laborador/Marsh Tea (*Rhododendron groenlandicum*) – Q^wəlut



- ▶ “Marsh tea grows in peat bogs, special environment, have to safeguard that tea and place where it grows” **Inez Bill**

Priority Wetland Places to Restore: Wapato (*Sagittaria latifolia*) or *spiq^wulc*

Restoring culturally
significant wetland
plant foods



7-3. Wapato tuber (Photo by Ann Garibaldi)

Tulalip Contact:
Jon Hall, Wetland Biologist,
jhall@tulaliptribes-nsn.gov,
360-716-4594

THANK YOU 😊



White Rock Wetland Complex, Tulalip Reservation

Linda Storm, Wetland and Aquatic Ecologist, Regional Tribal Lead for Enhancing State and Tribal Wetland Programs

storm.linda@epa.gov,
206-437-2293