



Region 5 Tribal Wetland Program Highlights

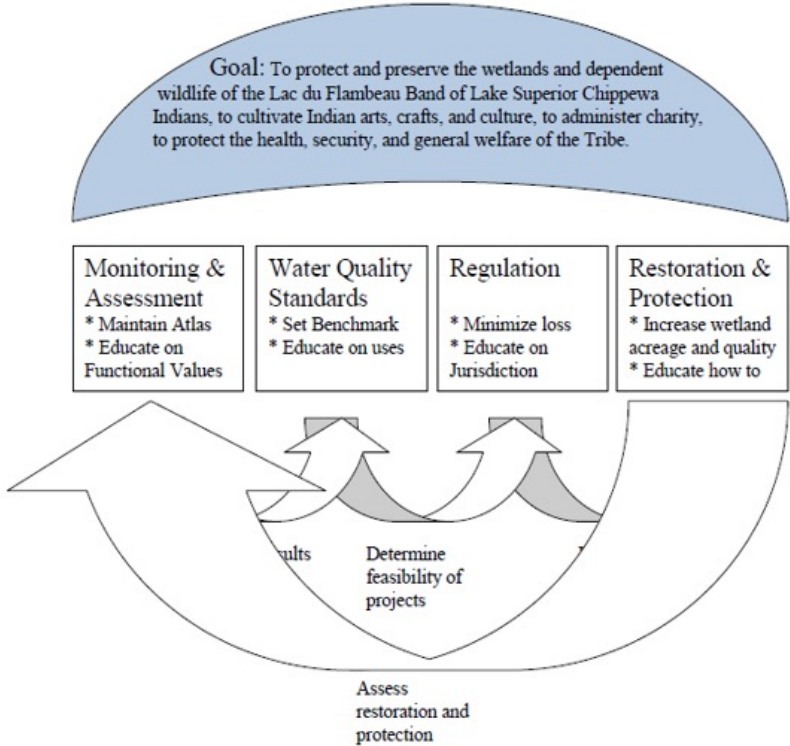
Virtual Tribal Wetland Workshop

Kerryann Weaver, EPA Region 5
Wetlands/404
September 23, 2021



Wetland Program Plans

Example: Lac du Flambeau



WPP Status

Fond du Lac (MN)	2019-2023
Lac du Flambeau (WI)	Expired 2016 (update in development)
Red Lake (MN)	Expired 2020 (update in development)
Stockbridge-Munsee (WI)	Expired 2020 (update in development)
Leech Lake Band of Ojibwa (MN)	In development
Forest County Band of Potawatomi (WI)	Expired 2020 (update in development)
Keewenaw Bay (MI)	In development
Grand Portage (MN)	2021-2025
Shakopee (MN)	In development

Wetland Program Development Grants

Regional WPDG

<u>Year</u>	<u>\$ (mil)</u>	<u>Funded vs. rec'd</u>	<u>Recipient</u>		
			State	Other	Tribe
2016	1.6	6/10	5	0	1
2017	1.3	*7/8	3	1	2
2018	1.4	*8/13	2	1	3
2019/20	2.7	*14/16	4	3	2
2021/22	2.6	*9/9	3	0	3

*multiple proposals funded to a single state or tribe

Tribal WPDG

<u>Year</u>	<u>\$ (mil)</u>	<u>Funded vs. rec'd</u>	<u>Region 5 recipients</u>
2017/18	\$2.64	17/44	1/1
2019	\$1.54	9/34	1/1
2020/21	\$3.12	19/45	4/5

Region 5 Tribal Wetland Working Group

Task	Schedule (Months after Notice to Proceed) Total Time = 24 months
Meet with the COR for a kick-off call	Within 20 days of receiving the contract
Task 1. facilitation of tribal meetings and lead discussions on feasibility with interested parties	0-8 months
Task 2. develop mission statement, begin conceptual design for group formulation and develop an implementation strategy	8-16 months
Task 3. plan for a workshop/training focused on the development of wetland monitoring strategies	16-20 months
Task 4. provide a workshop/training focused on the development of wetland monitoring strategies	20-24 months

WI Tribal Wetland Working Group



Objectives

1. Promote Wetland resources training opportunities for tribes
2. Provide for information sharing and transfer of technical expertise regarding restoration, protection, assessment and management.
3. Increase awareness and appreciation of the cultural importance of wetlands beyond the tribes

WI Tribal Wetland Working Group

WI Tribal Resources

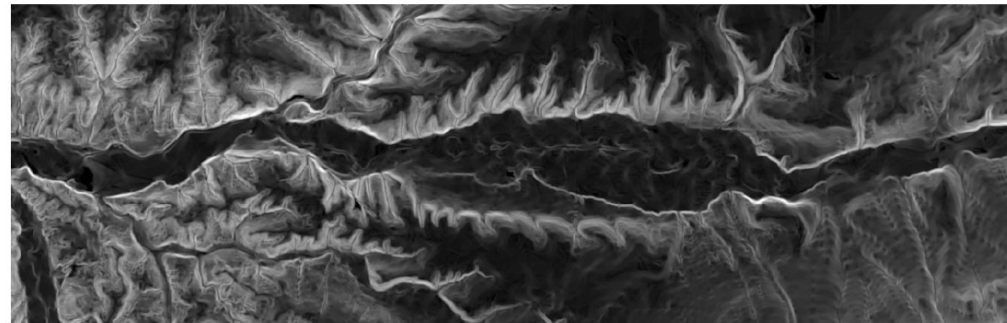
- 11 Federally Recognized Tribes
- 650,000 acres of tribally-owned land in WI
- Over 23,000 square miles of ceded territory in WI with treaty rights
- 80,000 acres of wetlands
- 600 miles of streams
- 50,000 acres lakes
- 450,000 acres forest

PNWTWIG Values and techniques regarding wetlands and aquatic landscapes

HOME ABOUT MEETINGS OPPORTUNITY DIGEST POSTS


Randy Poelma
 Env. Sciences Program Manager
 Ho-Chunk Nation Division of Env. Health
 Randy.Poelma@ho-chunk.com



Regional Focus

- Collaboration
- Integration

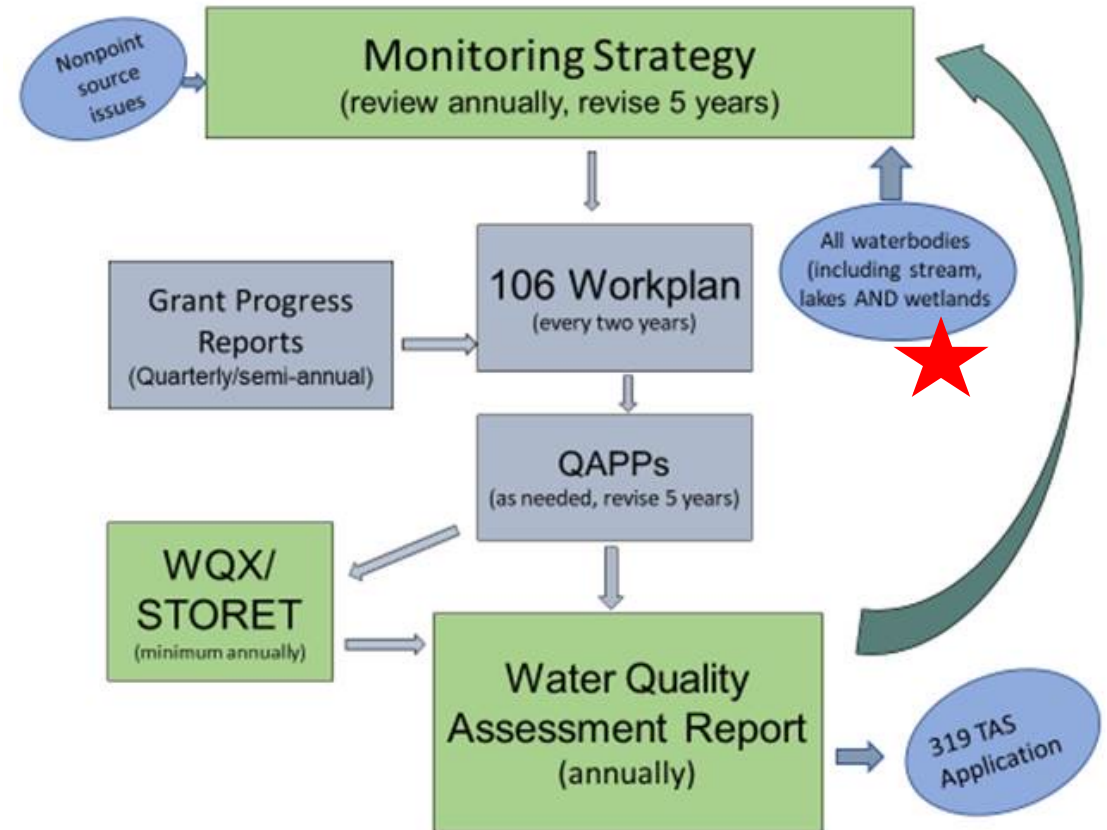

Grand Portage Band of Lake Superior Chippewa
Wetland Program Plan
2021-2025



Eagle Marsh

US Environmental Protection Agency – Region V
Wetland Program Development Grant - US EPA Reference #BG 96585512
3-22-2021

Laurel Wilson
Wetlands Specialist
Trust Lands Natural Resources Management Office
Grand Portage Band of Lake Superior Chippewa



Thanks!

