

# CSKT: Wetland data needs

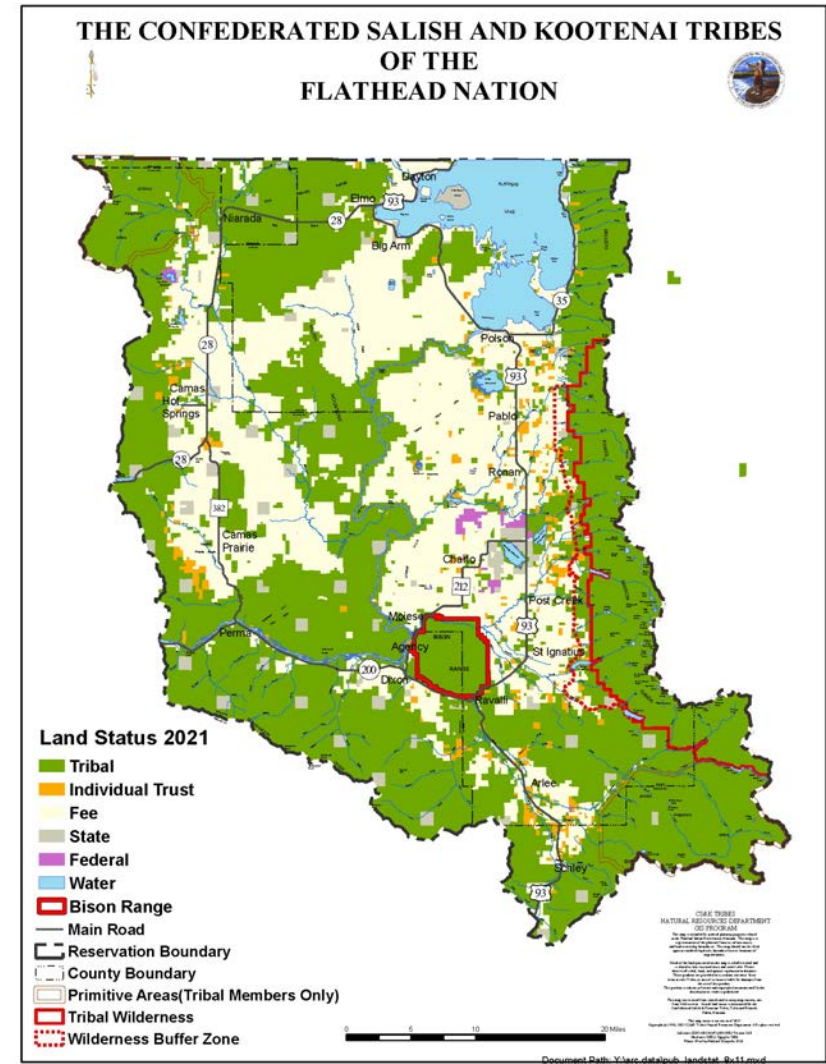
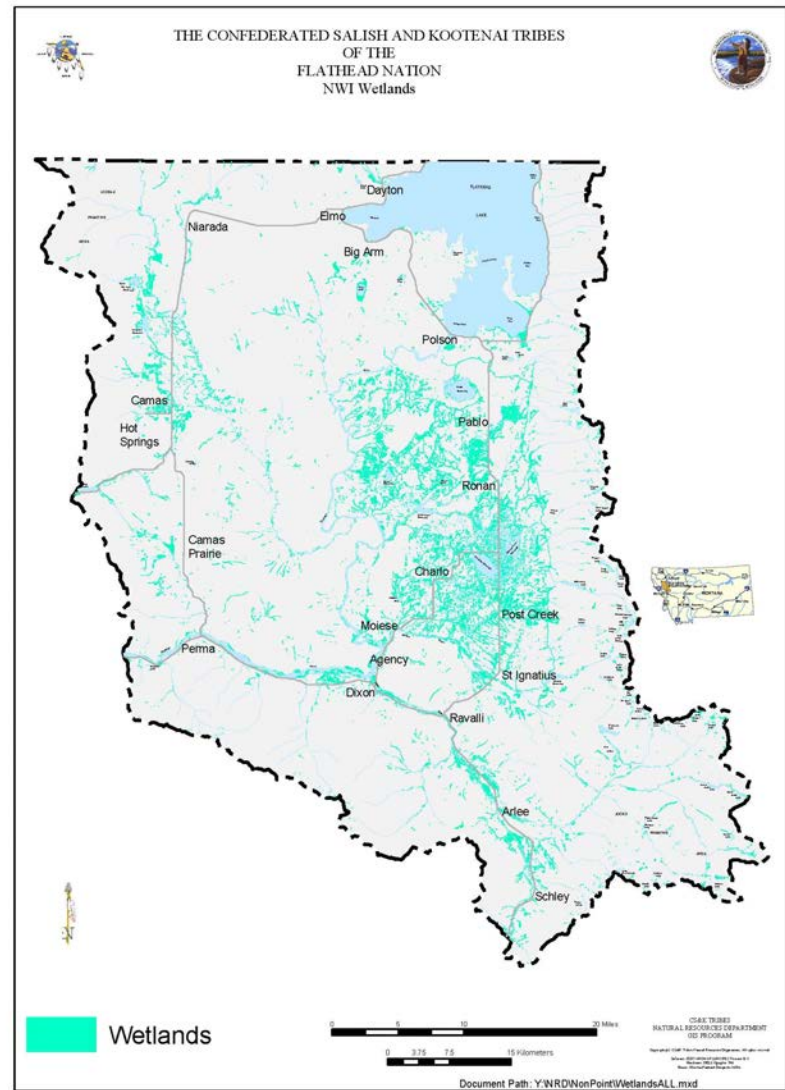
Tabitha Espinoza

Wetlands Conservation Program

2021

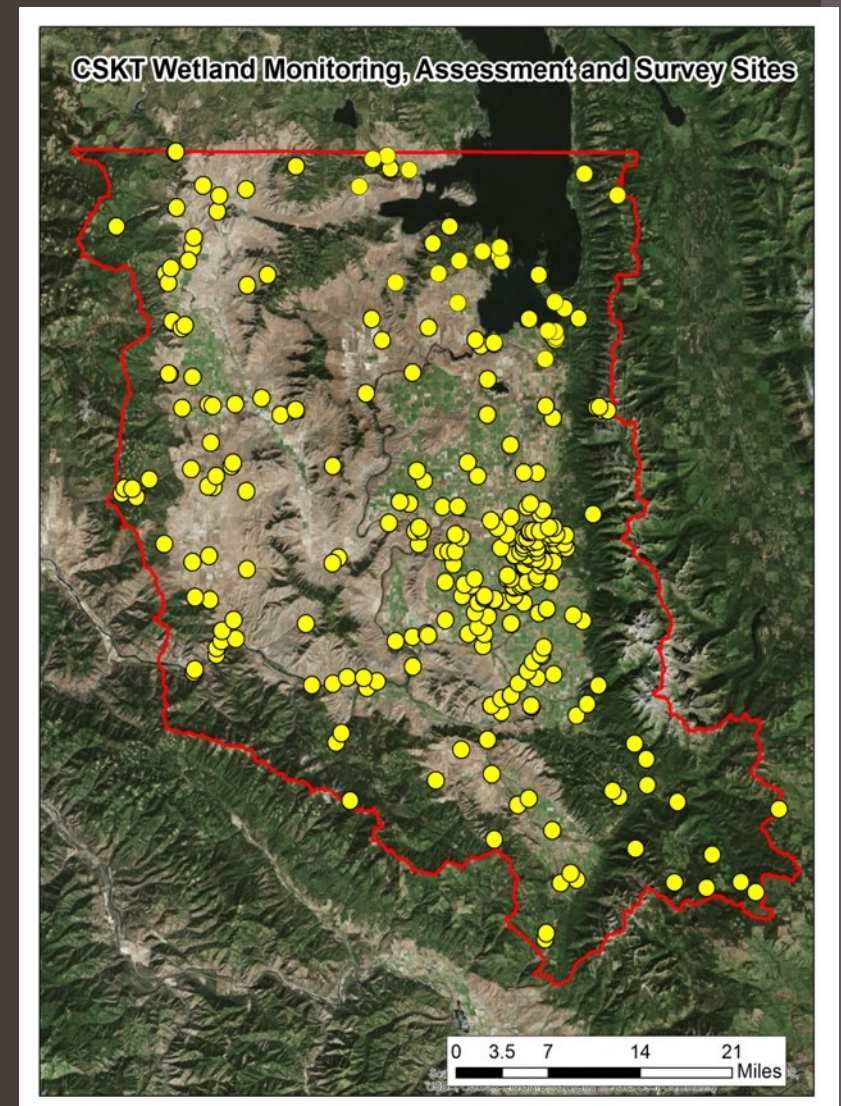
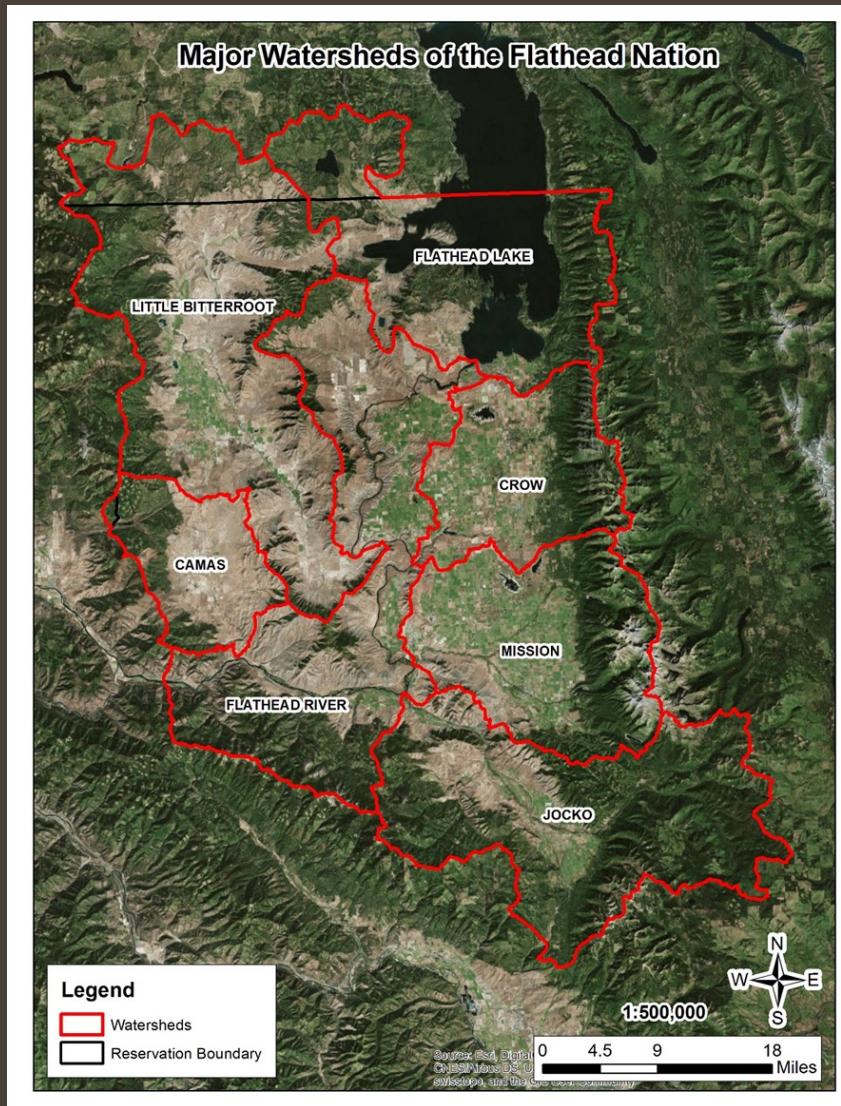


# Wetlands Conservation on the Flathead Indian Reservation





# 17 years of Assessment and Monitoring: rotating basin approach





How to  
manage the  
data to best  
protect the  
resources?



# Data issues: How we got here

## Lots of data

### Previous monitoring and assessment work:

- 1993: NWI accuracy assessment surveys (130), primarily in the Crow and Mission Watersheds.
- 2004: Mission Watershed (20 sites)
- 2005: Little Bitterroot Watershed (20 sites)
- 2006: Crow Watershed (21 sites)
- 2007: Flathead Lake Watershed (13 sites)
- 2008: Jocko Watershed (20 sites)
- 2009: Lower Flathead River Watershed (19 sites)
- 2010: Camas Watershed (18 sites)
- 2011: No funding
- 2012: Mission Watershed (20 sites). Land cover report completed for Mission Watershed
- 2013: Little Bitterroot Watershed (20 sites)
- 2014: No funding
- 2015: No funding
- 2016: 5 monitoring sites in each watershed (35 total)
- 2017: Crow Watershed (20 sites)
- 2018: Flathead Lake Watershed (20 sites)
- 2020: Jocko Watershed (20 sites)

Data issues:  
How we got  
here

## Inconsistent Funding leads to ...

### Staff turnover

From 2004 to 2020, 7 different staff have filled the role of Wetlands Conservation Coordinator and 3 different contractors have assisted in assessment and monitoring efforts.

WPDG funding is usually 2-3 years.

Data issues:  
How we got  
here

## Staff turnover leads to ... disorganization

### Where/how is our data stored?

- LOTS of paper documents in files
- One Access database with 7 years of plant and assessment data
- 2 word documents with plant species lists for 20 sites, along with a PDF file with the same information
- One excel sheet with 35 species lists (sorted in sheets)
- 60 excel files with species list (one for each site for three years)

# Data issues: Getting organized

1993 Surveys	7 Watersheds	FIR				N/A				
2004	Mission	MWS	T: wetlands FY2004	Relative Abundance database	Y: arc.user DL		Geum	20	Mike Durglo	4/29/2019
2005	Little Bitterroot	LBWS	Y: arc.user DL	Relative Abundance database	Y: arc.user DL		Geum	20	Sue Ball	4/29/2019
2006	Crow	CWS		PDF report only	Y: arc.user DL		Geum	21 and 2 LBR	Sue Ball	4/29/2019
2007	Flathead Lake	FHL	Y: arc.user DL	Relative Abundance database	Y: arc.user DL		Geum	10 and 3 LFHR	Sue Ball	4/29/2019
2008	Jocko	JRWS	Y: arc.user DL	Relative Abundance database	Y: arc.user DL		Geum	20	Clint Folden	4/29/2019
2009	Lower Flathead River	LFR	Y: arc.user DL	Relative Abundance database	Y: arc.user DL		Geum	19	Clint Folden	5/1/2019
2010	Camas	CAM	Y: arc.user DL	Relative Abundance database	Y: arc.user DL		Geum	18	Clint Folden	5/1/2019
2012	Mission	MWS	6/6/19 added to ext drive	word doc with a list by site# and PDF	Y: arc.user DL		CNL	20	Joe Weaselhead	5/1/2019
2013	Little Bitterroot	LBWS	6/6/19 added to ext drive	word doc with a list by site# and PDF	Y: arc.user DL	Y: arc.user DL	CNL	20	Paula Webster	5/1/2019
2016	7 Watersheds	FIR	Y: arc.user DL	excel with 35 short lists (sorted by sheet)	Y: arc.user DL	Did not sum, >=1 HGM type	CNL	35	Paula Webster	5/1/2019
2017	Crow	CWS	Y: arc.user DL	20 excel files with short lists (one for each site)	Y: arc.user DL	Y: arc.user DL	CNL	20	Evan Smith	5/30/2019
2018	Flathead Lake	FHL	Y: arc.user DL	20 excel files with short lists (one for each site)	Y: arc.user DL	Y: arc.user DL	Spring brook	20	Evan Smith	12/10/2020
2020	Jocko/Flathead Lake	JRWS/FHL		In process	21 excel files with short lists (one for each site)	In process	Y: arc.use r DL	20	JRWS, 2 FHL Tabitha Espinoza	



Data issues:  
Getting  
organized

## Putting all our data in one place!

- Working with a contractor to format all our data and input it into an existing Access database

Data issues:  
Getting  
organized

## Next steps?

- Work with a system like AQWMS to be able to ask big picture questions of our data.

Questions?

