

A close-up photograph of a white water lily flower in full bloom, floating on a pond. The flower's petals are bright white and layered, with a prominent green bud at the base. The water is dark and still, creating a clear reflection of the flower and the surrounding green lily pads. In the background, there are tall, thin reeds or grasses, some in focus and some blurred, suggesting a natural wetland environment. The lighting is bright, likely from the sun, casting soft shadows on the water.

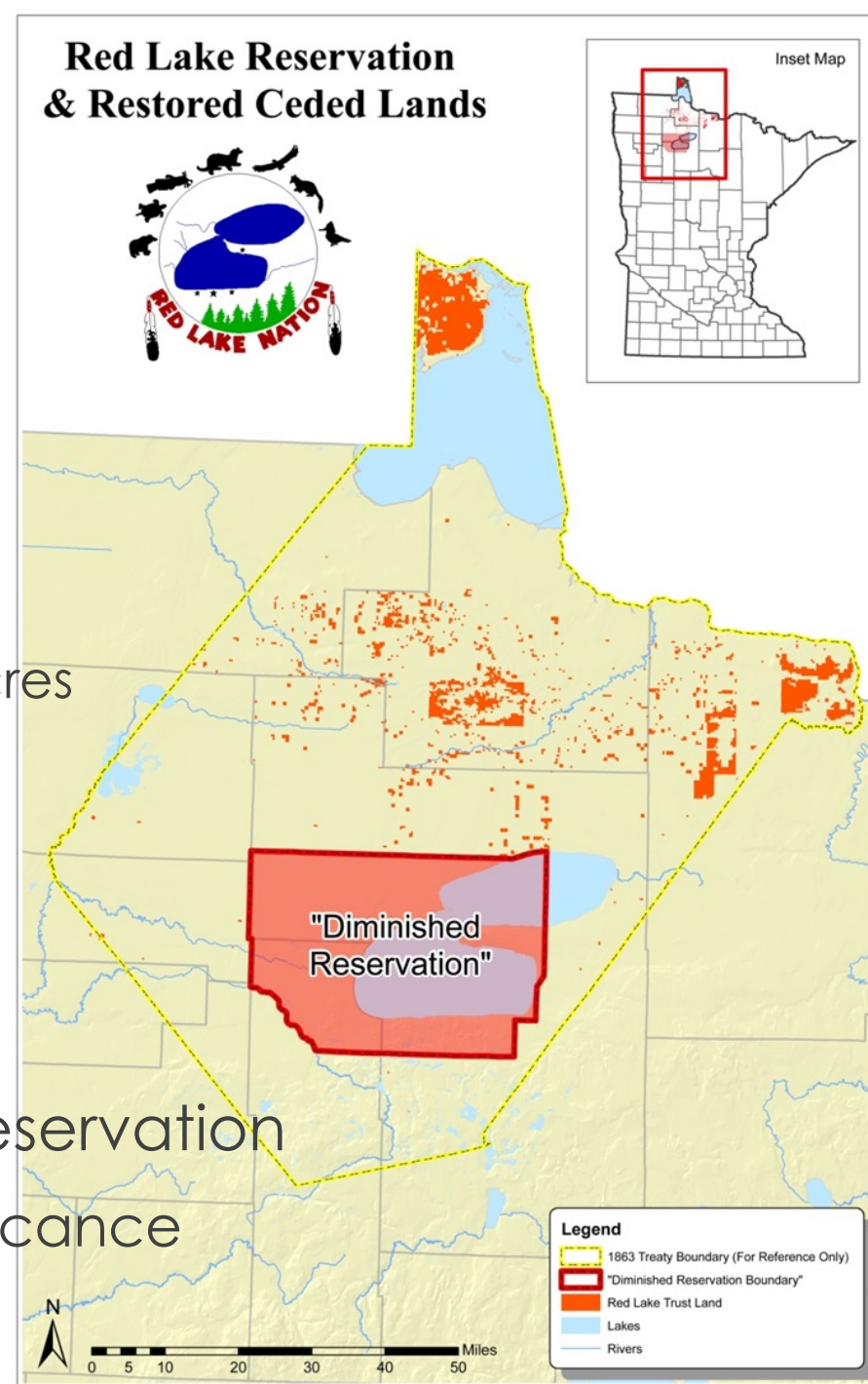
Red Lake Band of Chippewa Indians' Wetland Program Plan

Tyler Orgon
Red Lake Water Resources
Biologist

EPA Wetlands Workshop
Presentation 9/27/2021

Background

- Closed Reservation
- Resources
 - Total land holding in excess of 835,000 acres
 - ~308,000 acres forest
 - ~241,000 acres freshwater lakes
 - ~541,000 acres of mixed wetlands
 - ~371 miles of rivers and streams
- Importance of wetlands within the Reservation
 - Manage resources based Tribal significance



Wetland Program Plan 2016-2020

➤ US EPA's Core Elements Framework (CEF)

- Monitoring and Assessment
 - Develop an updated wetland inventory
 - Analyze existing monitoring data
 - Develop methods to monitor all wetland types (RFQA)
 - Establish historical nutrient conditions in open water wetlands
- Regulatory Activities including 401 Certification
 - Clean Water Act Section 404 and 401 Certification

- Voluntary Restoration and Protection
 - CWA 106 Pollution Control
 - CWA 319 NPS Pollution and Treatment Similar to State
 - Rapid Floristic Quality Assessment Index (RFQA)
- Water Quality Standards for Wetlands
 - Maintain a comprehensive wetland inventory



2017 WPDG



Monitoring and Assessment

- Development of an extensive wetland inventory
- Define monitoring objectives and strategies



Restoration and Protection

- Establish goals for a shoreline ordinance
- Develop guidelines and objectives for restoration and protection sites

2017 WPDG Monitoring and Assessment



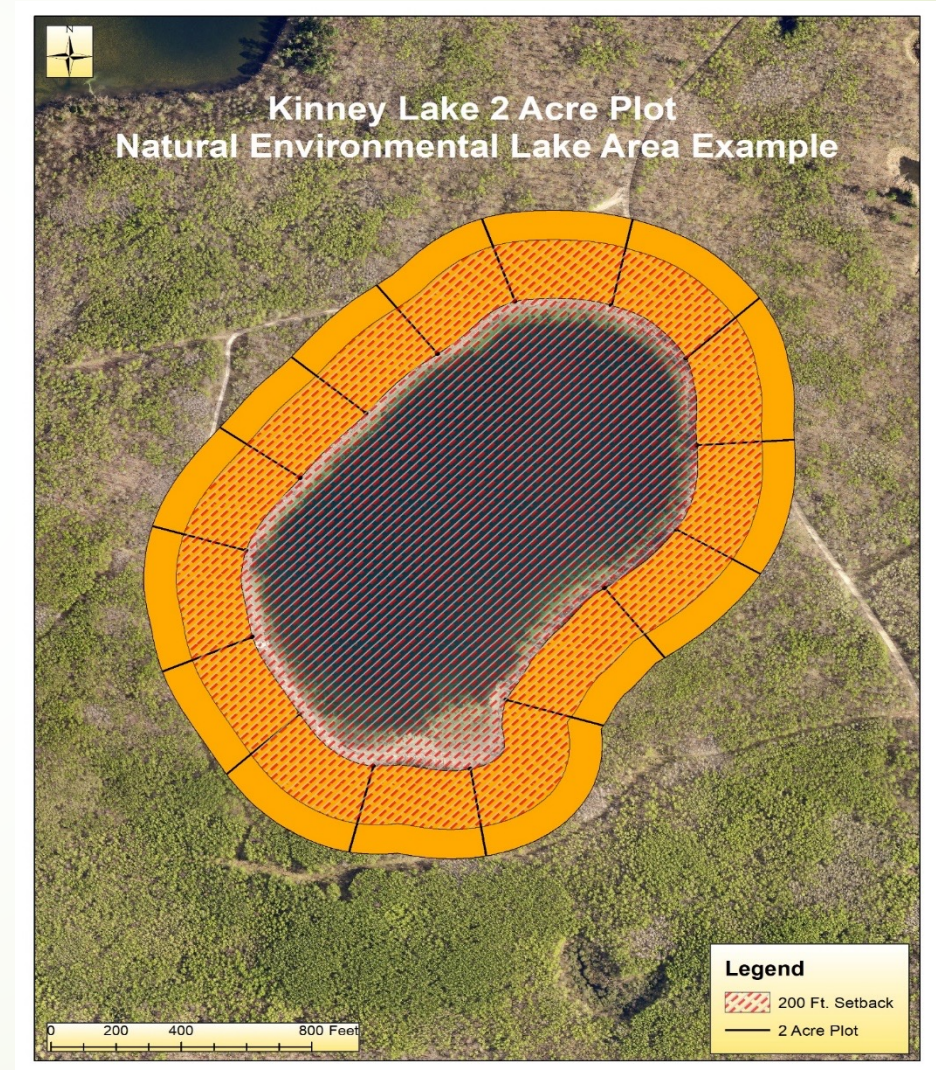
2017 Restoration and Protection

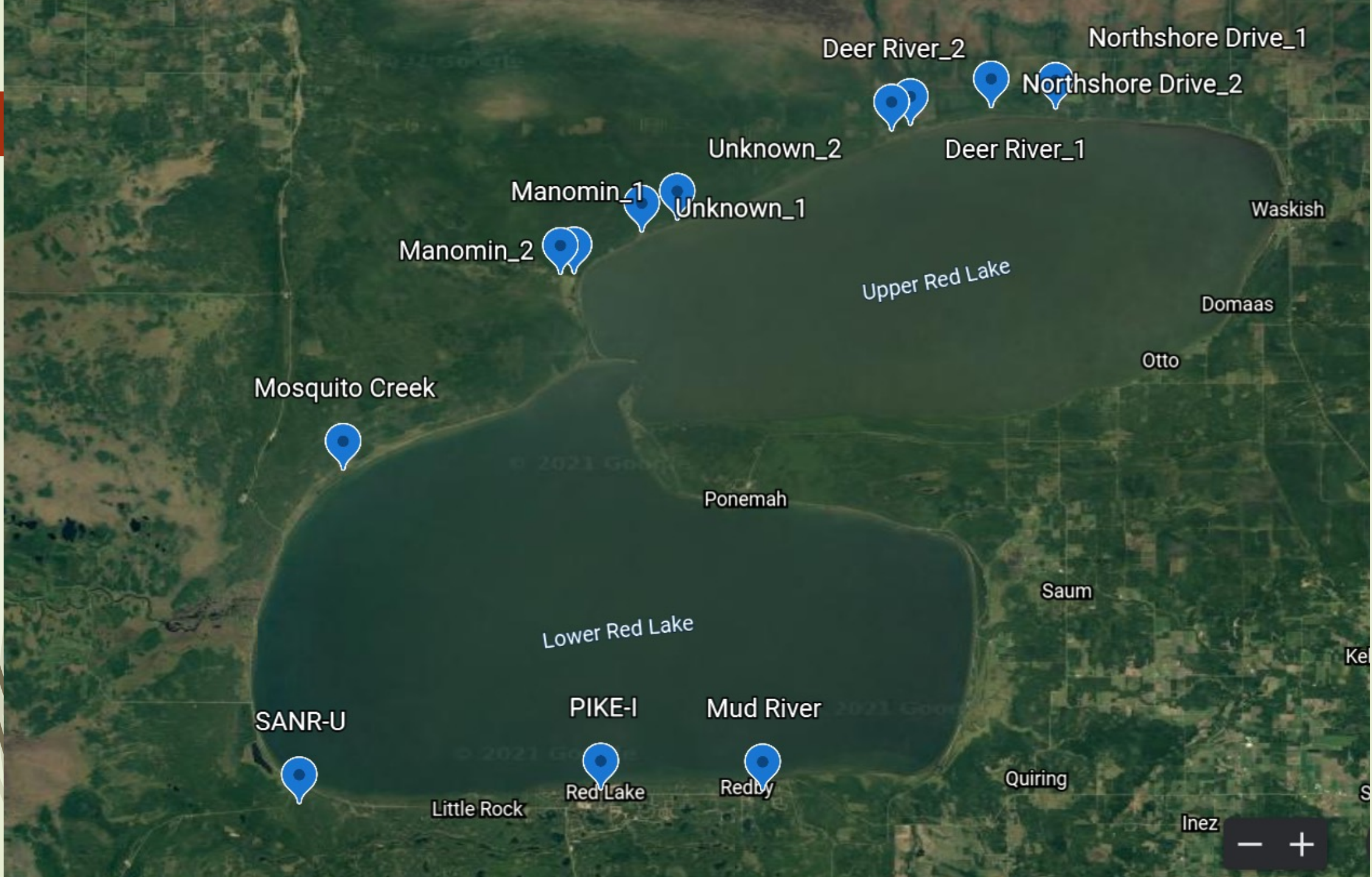
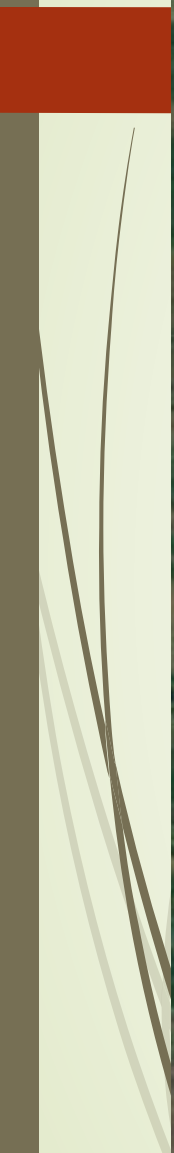
► Development of a Shoreline Ordinance

- Special Protection Areas
 - Waters vulnerable to pollution
 - Minimal development
 - Maintain high standards of quality
- Sensitive Management Areas
 - Sensitive due to flooding, steep slopes, erosion, presence of wetlands, or other physical constraints
- Natural Environmental Areas
 - Protect shorelines which are unsuitable for development.

► Prioritization

- Use of updated Wetland Inventory and new aerial photos.





A person in a yellow kayak is seen from behind, paddling on a calm lake. The water is dark and reflects the surrounding greenery. In the foreground, the tip of another yellow kayak and a yellow paddle are visible. The background is a dense forest of tall evergreen trees under a clear blue sky. The text "Thank You! Questions, Comments, Concerns?" is overlaid in white, sans-serif font in the center of the image.

Thank You!
Questions,
Comments,
Concerns?

tyler.orgon@redlakenation.org