



# PNW Tribal Wetlands Working Group (TWIG)

Matt Baerwalde

Environmental Policy Analyst, Snoqualmie Tribe





## Our Mission

The Tribal Wetland Working Group exists to share knowledge in support of the protection and restoration of wetlands and aquatic resources from a tribal perspective.

# TWIG Objectives

1. Promote wetland and aquatic resources training opportunities for Tribes.
2. Provide a place for information sharing, transfer of technical expertise regarding restoration, protection, and management strategies for wetlands and aquatic resources, between staff of Pacific NW Tribes.
3. Support development and implementation of wetland and aquatic resource monitoring strategies.
4. Increase awareness and appreciation of the cultural importance of wetlands and aquatic resources.



## Twig Mission & Objectives

The Tribal Wetland Working Group [TWIG] exists to share knowledge in support of the restoration and protection of wetlands and other aquatic resources from a tribal perspective.

- Promote wetland and aquatic resources training opportunities for Tribes.
- Provide a venue for information sharing and transfer of technical expertise regarding restoration, protection, and management strategies for wetlands and aquatic resources, between staff of Pacific NW Tribes.
- Support development and implementation of wetland and aquatic resource monitoring strategies.
- Increase awareness of cultural importance of wetlands and aquatic resources

**\*\*Wetland Program Plans can play an important role in this\*\***

# Participating Tribes

Coeur d'Alene

Cow Creek

Coquille

Coos

Coeur d'Alene

Colville

Cowlitz

Crooked Creek

Jamestown S'Klallam

Kalispel

Klamath

Kootenai

Lower Elwha Klallam

Lummi

Makah

Native Village of Eklutna

Shoshone-Pauite

Nez Perce

NWIFC

Port Gamble S'Klallam

Qawalangin Tribe of Unalaska

Quinault

Quileute

Shoalwater Bay

Siletz

Sitka

Snoqualmie

Spokane

Suquamish

Tulalip

Umatilla

Yakama

Yakutat Tlingit

Yukon River Intertribal Coalition

Upper Columbia Tribes

Warm Springs

White Mtn.



# Steering Committee Members

Matt Baerwalde, current TWIG Lead, Snoqualmie Tribe

Kelsey Taylor, future TWIG Lead, Snoqualmie Tribe

Rue Hewett Hoover, Nez Perce Tribe

Scott O'Daniel, Umatilla Tribes

Heather Bartlett, Cow Creek Tribe

Rudy Salakory, Cowlitz Tribe

Tom Elliot, Yakama Nation

Greg Eide, Quinault Nation

Linda Storm, EPA Region 10



# Funding

TWIG receives funding through an EPA Wetland Program Development Grant administered through the Snoqualmie Tribe

# Workshop Themes

Tailored by the hosting Tribe to their current issues.

Examples from past workshops include:

- Role of wetland in stream temperature regulation
- Climate change influence on high meadows,
- Urban encroachment of floodplain wetlands

Each workshop has started with an elder speaking about important community uses of water and wetlands.



Workshop hosted by Confederated Tribes of Warm Springs in 2013 at Warm Springs, OR.

# 2012 Training- National Wetland Condition Assessment, Yakama Reservation






# Materials Associated with Culture



Slide credit – Eric Quaempts

Your Logo or Name Here






# *Recent Project-* Identifying Barriers and Obstacles to Wetland Program Plans

Can we identify barriers to developing new or updating expired Tribal Wetland Program Plans?

Can we use what we learn to help EPA help Tribes?



# Tribal Wetland Program Survey Results

---

IDENTIFYING OBSTACLES AND  
BARRIERS TO TRIBAL WETLANDS  
PROGRAMS IN EPA R10 (2020)

Prepared by Matt Baerwalde, Snoqualmie Indian Tribe staff and current TWIG lead

# EPA R10 Tribes with Expired or Expiring Wetlands Programs (2020):

12

Tribal Program	State	Who will reach out
Golovin Bay Watershed Alliance/White Mountain Native Village	AK	Matt
Native Village of Eklutna	AK	Matt
Chilkoot Indian Association	AK	Matt
Chilkat Indian Village	AK	Matt
Coeur d'Alene Tribe	ID	Rue
Coquille Indian Tribe	OR	Scott
Cow Creek Indian Tribe	OR	Scott
Klamath Tribe	OR	Scott
Warm Springs Tribe	OR	Scott
Yakama Nation	WA	Matt
Kalispel Tribe of Indians	WA	Matt
Port Gamble S'Klallam Tribe	WA	Matt

<https://www.epa.gov/wetlands/state-and-tribal-wetland-program-plans-region-10>

# EPA R10 Tribes that Responded:

7

2 respondents  
had plans that  
were not  
expired.

Tribal Program	State	Who will reach out
Golovin Bay Watershed Alliance/White Mountain Native Village	AK	Matt
Native Village of Eklutna	AK	Matt
Chilkoot Indian Association	AK	Matt
Chilkat Indian Village	AK	Matt
Coeur d'Alene Tribe	ID	Rue
Coquille Indian Tribe	OR	Scott
Cow Creek Indian Tribe	OR	Scott
Klamath Tribe	OR	Scott
Warm Springs Tribe	OR	Scott
Yakama Nation	WA	Matt
Kalispel Tribe of Indians	WA	Matt
Port Gamble S'Klallam Tribe	WA	Matt

# Survey Questions

---



## 5 Questions

Why did you make a plan?

Why did the plan lapse?

What barriers exist or existed to renewing the plan?

What benefits were anticipated from creating and having a WPP? Were these benefits realized?

Were there any negative impacts from creating or having a WPP?

# Survey Results

---



## Why did you make a plan?

- **Map**
- **Prioritize**
- **Protect**
- **Conserve**
- **Cultural knowledge**
- **Interdepartmental coordination**

# Survey Results

---



## Why did the plan lapse?

- Staff turnover/Lack of capacity
- Loss of program funding
- Grants can be difficult to access
- Departmental/Tribal priorities shifted
- Plan was still relevant/did not need updating



# Survey Results

---



## What barriers exist or existed to renewing the plan?

- **Staff turnover**
- **Lack of funding**
- **Grants can be difficult to access**
- **25% match requirement was consistently prohibitive (PPG match is less, but...)**
- **Disconnect between EPA requirements and Tribal priorities**

# Survey Results

---



## **What benefits were anticipated from creating and having a WPP?**

- Tribal cultural wetland knowledge expanded and incorporated into planning
- Wetlands Inventory created
- Interdepartmental wetland coordination improved
- Wetland goals created
- Groundwork laid for future efforts

## **Were these benefits realized?**

- Yes

# Survey Results

---



**Were there any negative impacts from creating or having a WPP?**

- No
- Some intratribal, interdepartmental tensions exposed
- “The TWIG has been great. It should go on.”

# Common Themes

---

- **Staff and supervisor turnover is a common obstacle to plan and program renewal**
- **Creates cycle: Lack of capacity -> Loss of funding --> Program ceases to exist -> No staff capacity**



# Common Themes

---



- Staff and supervisor turnover is a common obstacle to plan and program renewal

~~· Creates cycle: Lack of capacity → Loss of funding  
→ Program ceases to exist → No staff capacity~~

**BREAK THE CYCLE!**

**Base funding is needed for Tribal Wetland Programs!**

# Common Themes

---



- **Tribes view their WPPs as successful!**
- **Creating valuable wetlands databases**
- **Helping to protect and manage wetlands**
- **Fostering interdepartmental coordination**
- **Increasing knowledge of tribal cultural wetland values**

# Discussion & Potential Solutions

---



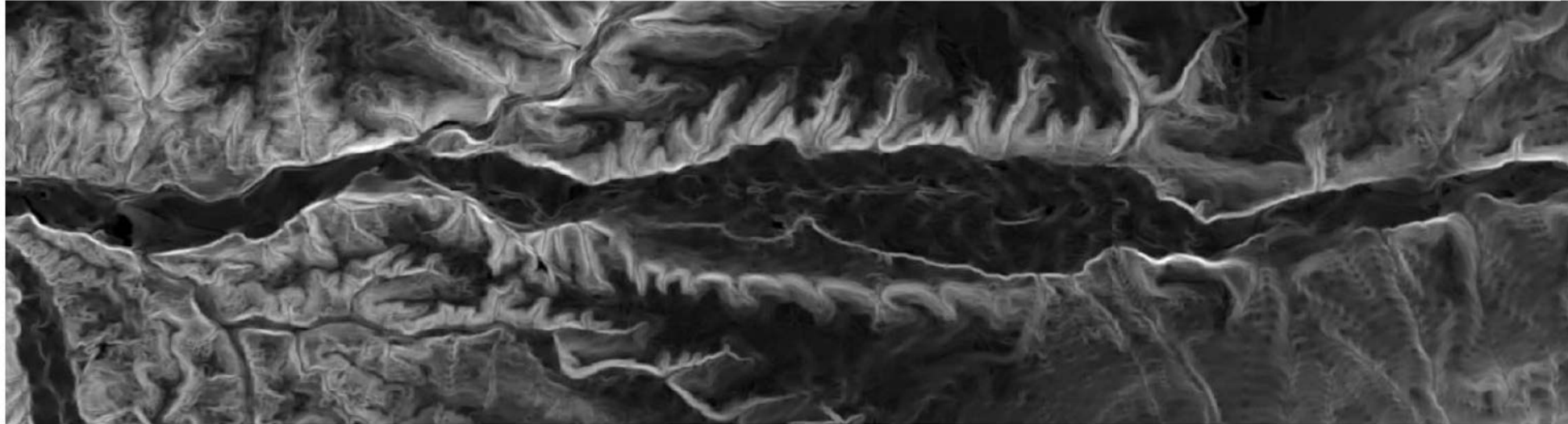
**Can we use what we learn to help EPA help Tribes?**

- **Waive or reduce 25% match requirement**
  - **Allow more flexibility for Tribal priorities**
  - **Others?**
- 
- **Solutions for staff turnover?**
- 
- **Broaden the focus of WPPs—fisheries, wildlife, water quality**
  - **Base Wetlands Program funding à la**

# TWIG Website: <https://pnwtwig.wordpress.com/>

**PNWTWIG** *Values and techniques regarding wetlands and aquatic landscapes*

[HOME](#) [ABOUT](#) [MEETINGS](#) [OPPORTUNITY DIGEST](#) [POSTS](#)



## Home

The PNW TWIG (Pacific North West **T**ribal **W**etlands Working **G**roup), or, just **TWIG**, is a group of Native American Tribes that have common interests in wetlands and aquatic resources. Since 2010, the TWIG has met at workshops or trainings about twice per year to share techniques, approaches and to learn from one another on reservations across the Northwest. These workshops and trainings are open to all PNW Tribes and are aimed at improving Wetland Program Plans and the condition of wetlands in the region.

### WELCOME

Self-governance, tribal heritage, and cultural identity are directly dependent upon high quality water and associated Traditional resources, as guaranteed by treaty.



END  
Thank you!

