

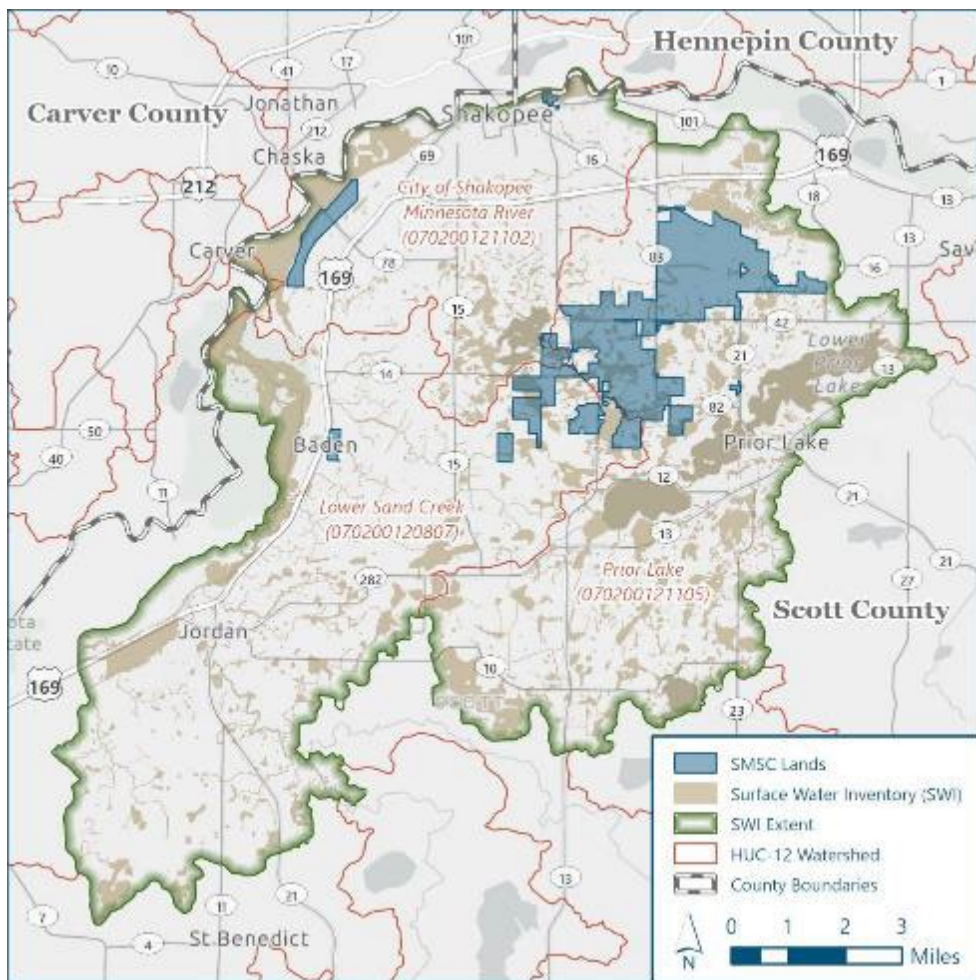
Geospatial Tools and Technology for Tribal Wetland Programs

SMSC Land and Natural Resources Department
Ferin Davis Anderson
Supervisor of Environmental Sciences

SHAKOPEE MDEWAKANTON SIOUX COMMUNITY
952.445.8900 | shakopeedakota.org    



Wetland Program Goals



- Update Wetland Inventory
- Develop Wetland Condition Assessment (RAM)
- Develop decision support tools for wetland preservation & restoration
- Update Wetland Program Plan
- Incorporate LiDAR data into program
- Develop web portal communication tool



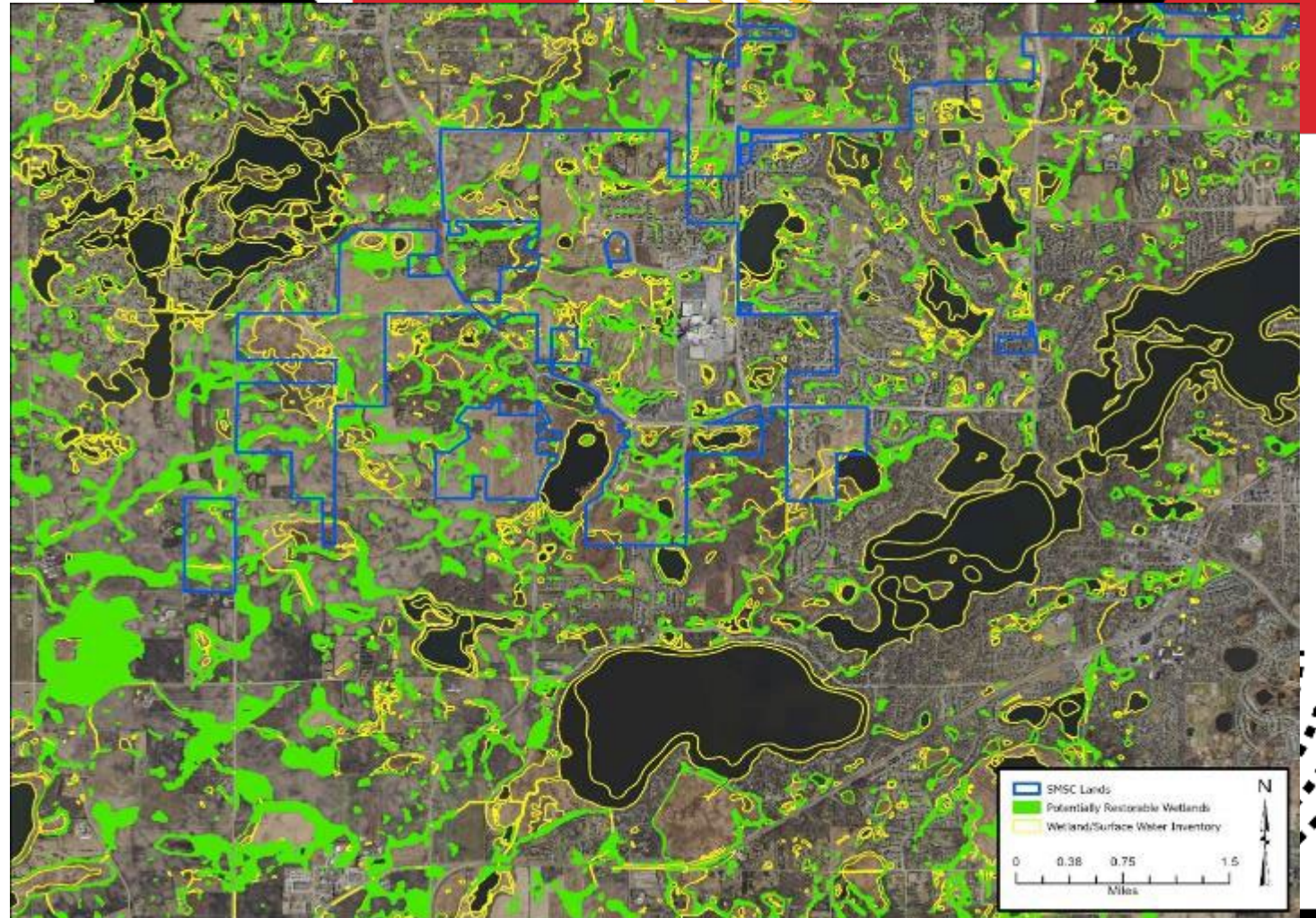
Wetland Mapping and Inventory

- Project area included the Prior Lake, Lower Sand Creek, and a portion of the City of Shakopee-Minnesota River HUC 12 watersheds (76,120-acres)
- Used National Wetland Inventory (NWI) Wetland Standards
- Incorporated Landscape, Landform, Water Body, and Water Flow Path (LLWW) classification schema.

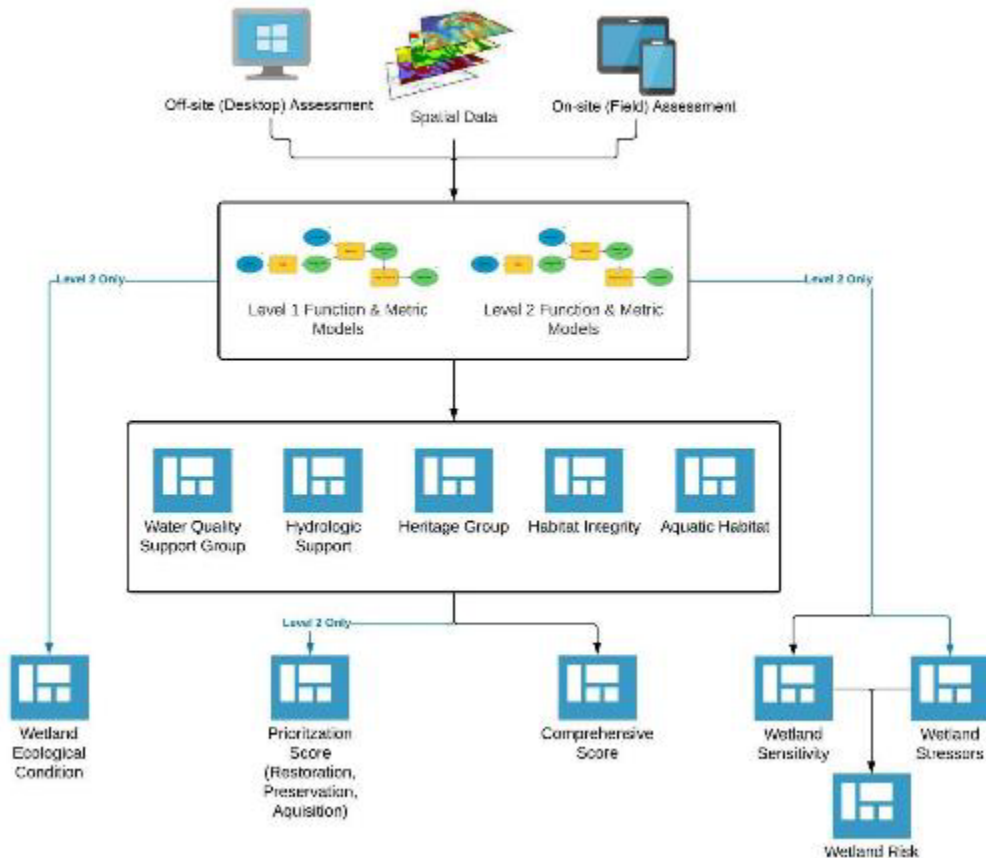


Potentially Restorable Wetland Dataset

- Developed protocol for identifying former and/or hydrologically altered wetlands
- Forest-based Classification and Regression (Spatial Statistics)
- Wetland restoration decision support tool



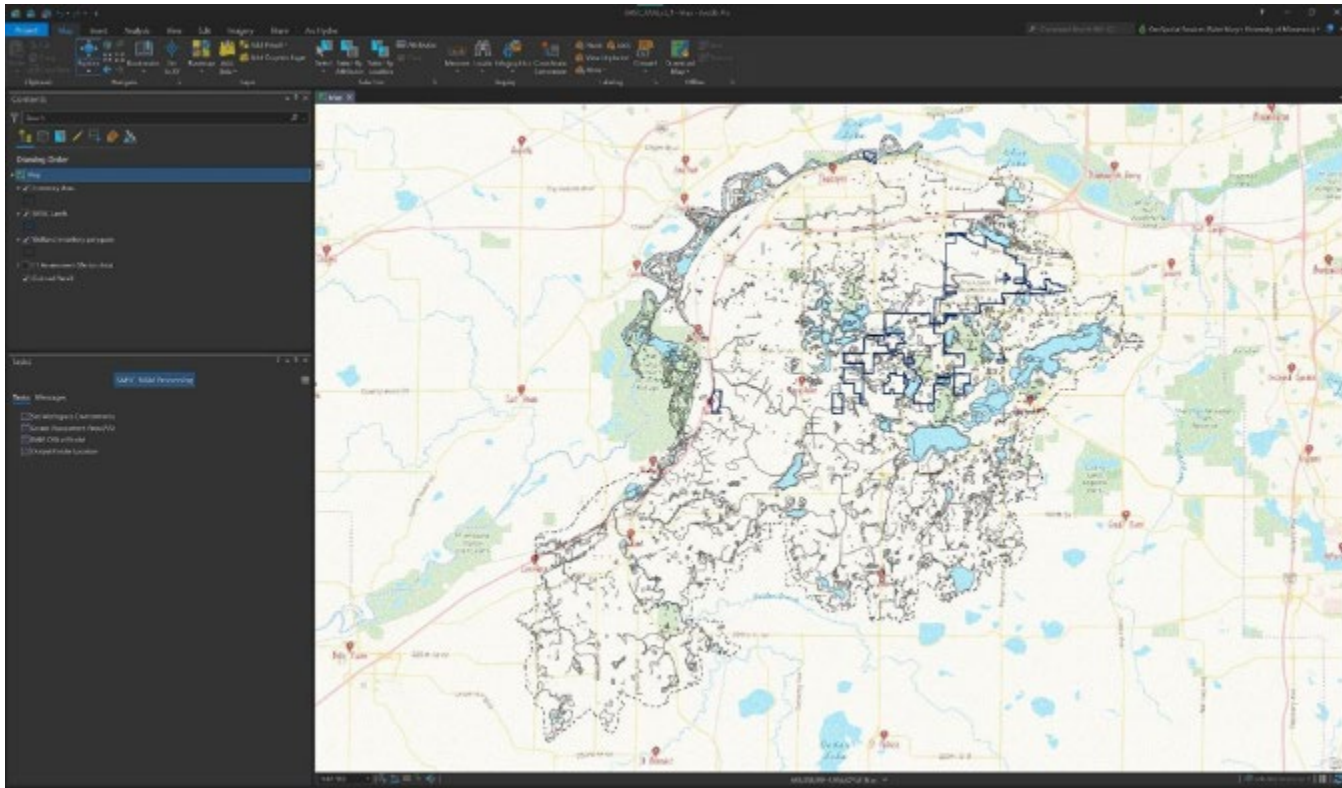
SMSC-Rapid Assessment Method



Function Group	Function
Aquatic Habitat Group	Amphibian and Turtle Habitat Aquatic Invertebrate Habitat Shorebird Habitat Waterfowl and Waterbird Habitat
Habitat Integrity Group	Characteristic Plant Community Support Energy Dissipation Landscape Connectivity Soil Surface Condition
Heritage Group	Education Potential Historical Site Potential Visual/Aesthetic Quality Water-based Recreation
Hydrologic Group	Groundwater Recharge Water Storage
Water Quality Support	Carbon Sequestration Phosphorus Retention Sediment Retention and Stabilization



SMSC-RAM



Field Attribute and Stressors Form

Site name: *

Assessment Area (AA) ID: *

Map Overview

General Description

Water-Related Attributes

Topography- and Geography-Related Attributes

Vegetation and Related Attributes

Plant and Animal Related Attributes

Soil and Nutrients Related Attributes

Use, Visitation, Cultural Significance and Related Attributes

Wetland Stressors

Comments:



SMSC-RAM

SMSC-RAM v3.1.1a

Cover Page: Basic Description of Assessment Area

Site Name: Johnson
 Assessment Area (AA) ID: 1025
 Investigator(s) Name: Stacy Storm, Karl Gish, Rachel Crowhart, Jennie Sirota
 Date and Time of Field Visit: 6/30/22 5:00 PM

Are delineated wetlands present within the AA? Yes
 List the WNC(s) (i.e. known): 0000

Which Unique ID numbers from the wetland inventory are present within the AA?
 1

Wetland Systems and Classes present within the AA:

Systems Present:	Classes Present:
Lacustrine: None present	Emergent vegetation: Not present
Pelustine: None present	Aquatic beds (incl. SAV): Not present
Riverine: None present	Scrub-shrub vegetation: Not present
	Forested vegetation: Not present
	Open water: Not present
	Unconsolidated bottom: Not present
	Unconsolidated shore: Not present

Comments:
 AA contained a floating bog with high plant diversity. Observed Frog, snail, fawn. Open water present. Ring of reed canopy grass around wetland.

SMSC-RAM v3.1.1a

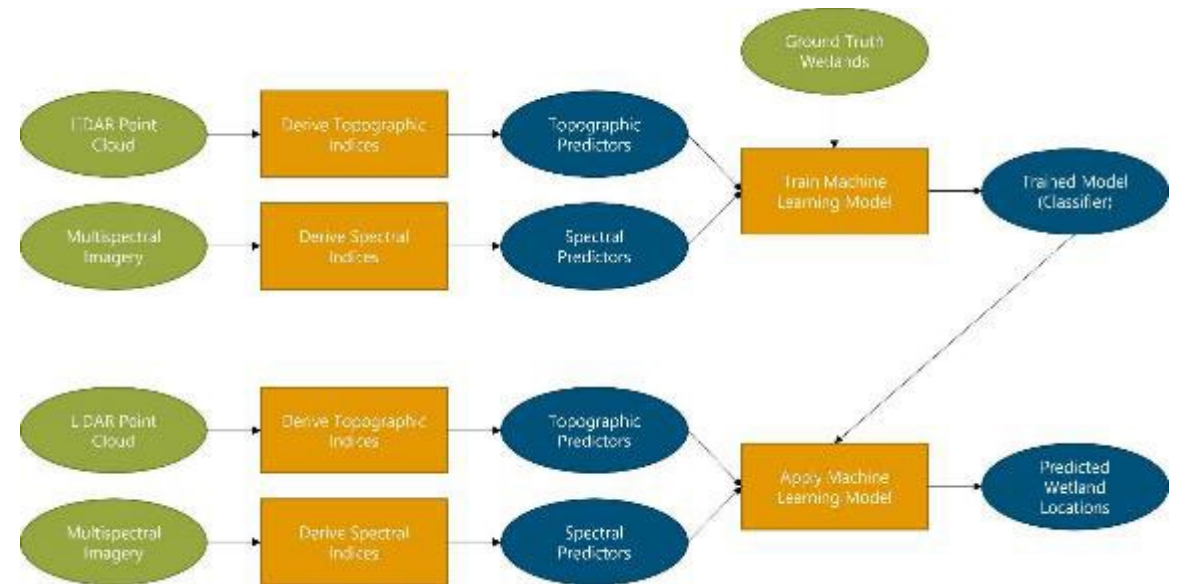
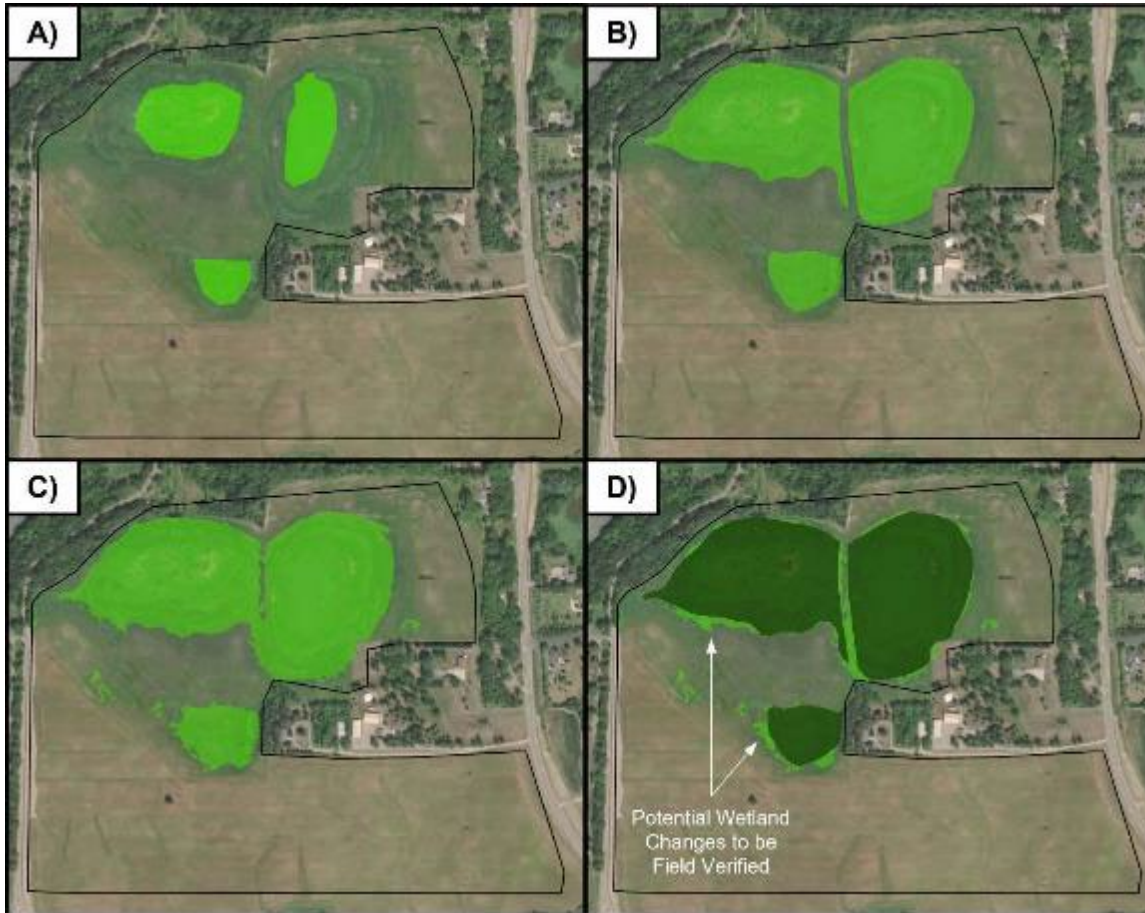
Assessment Area Scorecard

	Function Score	Function Rating	Break Proximity	Values Score	Values Rating	Break Proximity
Abiotic Functions:						
Carbon Sequestration (CSeq)	7.82	High	EM			
Energy Dissipation (EDiss)	10.00	High	L/H	10.00	High	L/H
Groundwater Recharge Potential (GWR)	5.82	Moderate	M/H			
Landscape Connectivity (LCConn)	6.51	Moderate	M/H	6.57	Moderate	M/H
Phosphorus Retention (PR)	10.00	High	L/H	3.40	Moderate	M/L
Sediment Retention and Stabilization (SR)	10.00	High	L/H	3.47	Moderate	M/L
Soil Surface Condition (SoilCond)	8.01	High	L/M			
Water Storage (WS)	10.00	High	H/H	6.67	High	H/L
Biotic Functions:						
Amphibian and Turtle Habitat (Amphib)	7.89	High	H/L	5.36	Moderate	L/M
Aquatic Invertebrate Habitat (AquInv)	8.24	High	F/M	3.63	Moderate	M/L
Characteristic Plant Community (CPCS)	2.42	Low	L/H	2.44	Low	L/H
Succubal Habitat (ShBird)	6.72	High	H/L	3.33	Moderate	M/L
Waterfowl and Waterbird Support (WBird)	7.63	High	H/L	4.25	Moderate	M/L
Cultural Functions:						
Educational Potential (EdPot)	7.03	High	H/L	7.81	High	F/M
Historical Site Potential (Hist)	1.25	Low	L/M	2.50	Low	L/H
Visual/Aesthetic Quality (Vis)	2.88	Low	L/H	2.88	Low	L/H
Water-based Recreation (Rec)	5.28	Moderate	L/M	4.44	Moderate	L/M
Roll up Scores:						
<i>Functional Groups</i>						
Water Quality Support (CSeq, PR, SR)	9.64	High	H/H			
Hydrologic Support (GWR, WS)	8.95	High	H/H			
Aquatic Habitat (Amphib, AquInv, ShBird, WBird)	7.89	High	H/M			
Habitat Integrity (CPCS, EDiss, CConn, SoilCond)	8.37	High	L/M			
Heritage Group (EdPot, Hist, Vis, Rec)	5.57	Moderate	M/H			
<i>Abiotic Functions</i>	9.26	High	H/H			
<i>Biotic Functions</i>	7.38	High	H/L			
<i>Cultural Functions</i>	5.57	Moderate	M/H			
Comprehensive Functional Score	8.45	High	F/M			
Other Condition Metrics:						
Ecological Condition (EC)	7.50	High	H/L			
Wetland Sensitivity (Sens)	5.54	Moderate	L/M			
Wetland Stressors (STR)	4.04	Moderate	M/L			
Wetland Risk	4.78	Moderate	L/M			

Restoration/Preservation/Land Acquisition Prioritization Score:
 Preservation Prioritization Score: 55.04%



SMSC-Wetland Identification Model



Contact info:

Ferin Davis Anderson

Ferindavis.Anderson@shakopeedakota.org

952-463-6185



SHAKOPEE MDEWAKANTON SIOUX COMMUNITY
952.445.8900 | shakopeedakota.org    

