

# UPDATING THE NATIONAL WETLAND INVENTORY IN US VIRGIN ISLANDS

**EPA Wetlands Program Development Grant Region 2**





# Agenda

- 1. Introductions**
- 2. NWI Overview**
- 3. Project Objectives**
- 4. Methods**
- 5. Fieldwork**
- 6. Results**



# Introductions DU and FWS



**Evelyn Magner**  
DU Geospatial Analyst

**Amanda Pachomski**  
USFWS Regional Wetlands Coordinator

**Jes Skillman**  
DU Geospatial Manager



# Introductions DPNR



**Dr. Nicole F. Angeli**  
Director, Division of Fish & Wildlife  
*Government of Virgin Islands*



**Sean Kelly**  
Wildlife Biologist



**Julia Plotkin**  
Environmental Specialist



**Victoria Beasley**  
Wildlife Biologist



# National Wetland Inventory

- The authoritative map for US wetlands and deepwater habitats.
- Includes location, extent, and type of wetland.
- Supports science-based natural resource decision making.
- The FWS Wetlands Mapper Tool generates over 525,000 views annually.

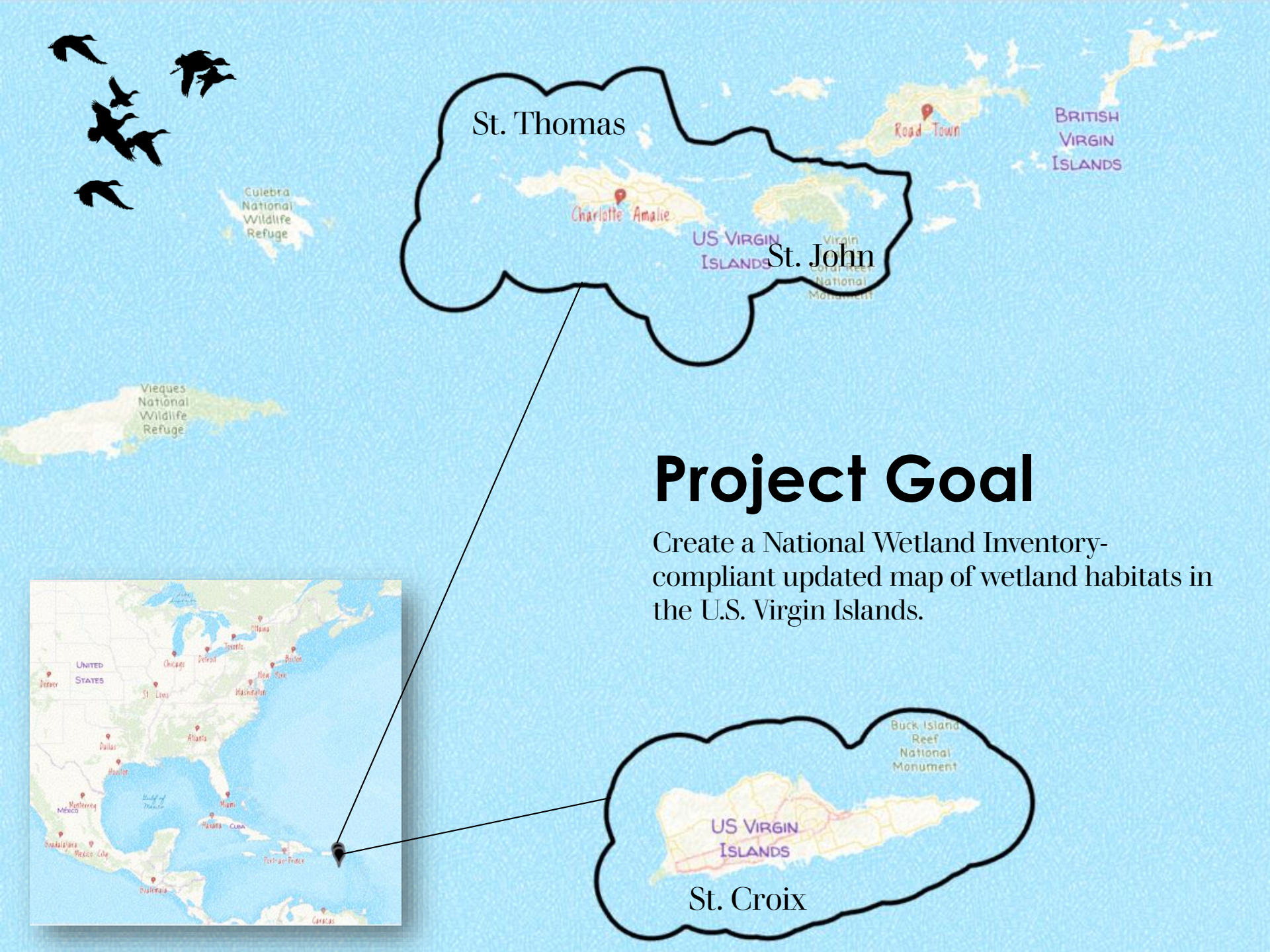
FWS/OBS-79/31  
DECEMBER 1979  
Reprinted 1992

## Classification of Wetlands and Deepwater Habitats of the United States



U.S. Department of the Interior  
Fish and Wildlife Service





St. Thomas

Charlotte Amalie

US VIRGIN ISLANDS

St. John

Road Town

BRITISH VIRGIN ISLANDS

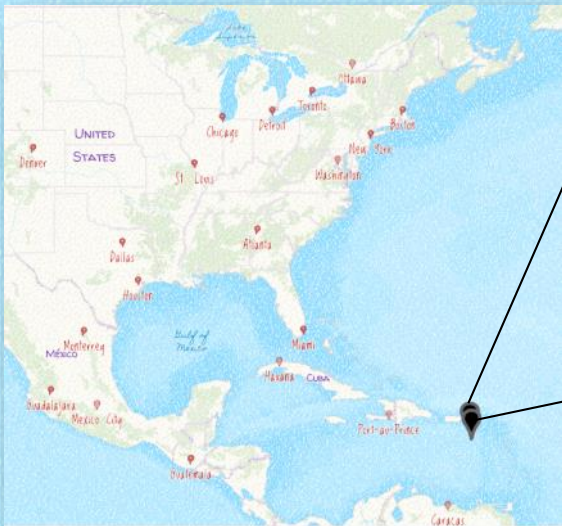
Culebra National Wildlife Refuge

Virgin Gorda National Monument

Vieques National Wildlife Refuge

# Project Goal

Create a National Wetland Inventory-compliant updated map of wetland habitats in the U.S. Virgin Islands.

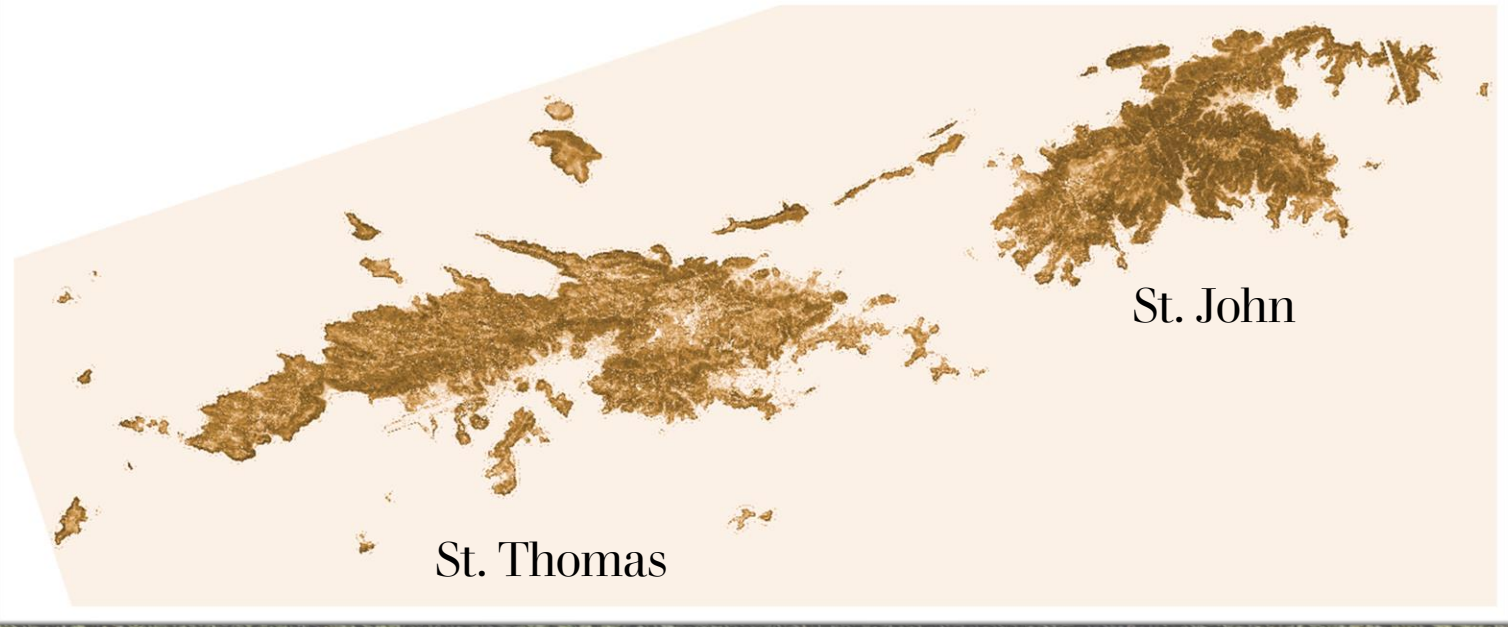


Buck Island Reef National Monument

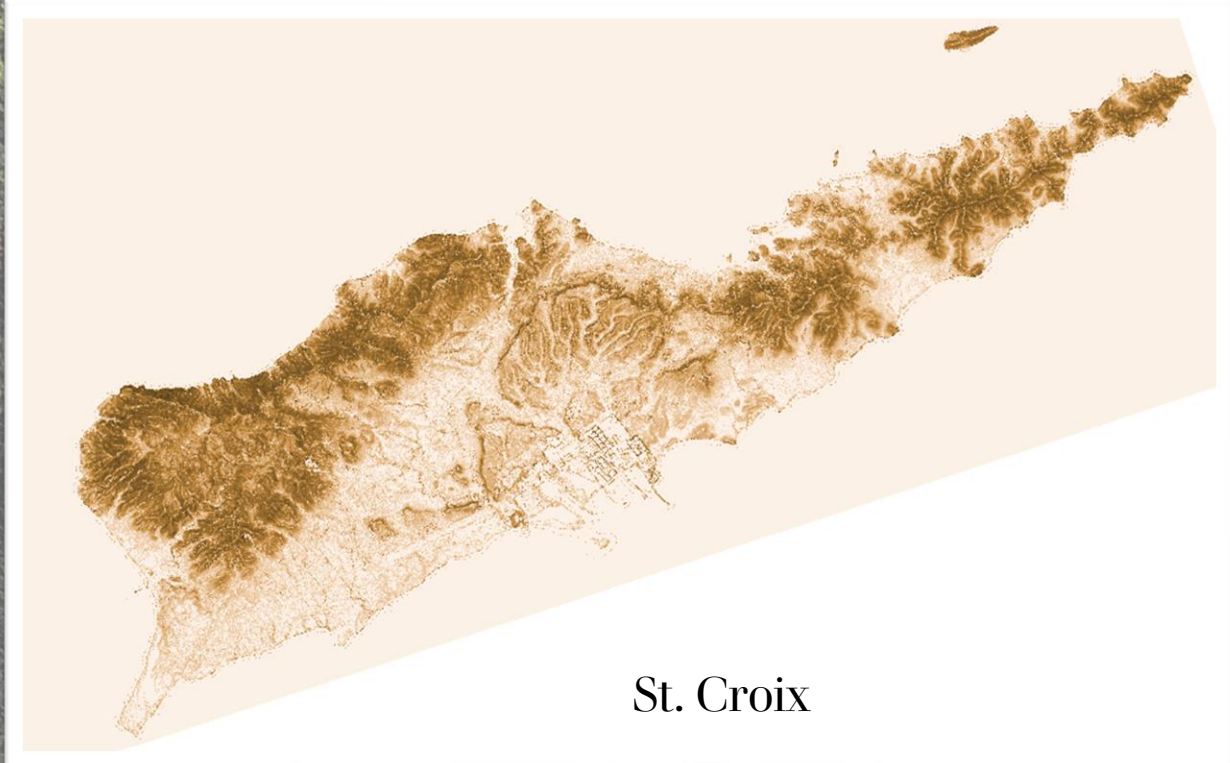
US VIRGIN ISLANDS

St. Croix





# Slope





# U.S. Virgin Island NWI

- Wetland maps last updated in 2008
- Changes in water availability as well as extreme weather events (e.g. Hurricane Maria) have impacted wetland habitats.
- USVI has experienced extreme terrestrial changes due to historical agricultural practices and the introduction of non-natives



# Great Salt Pond, St. Croix

**September 11, 2007**



**April 30, 2018**



[https://www.gotostcroix.com/wp-content/uploads/2021/03/STXEEMP\\_GreatSaltPond-FactSheet\\_2021.pdf](https://www.gotostcroix.com/wp-content/uploads/2021/03/STXEEMP_GreatSaltPond-FactSheet_2021.pdf)

<https://eastendmarineparkfriends.org/whats-up-with-great-pond/>



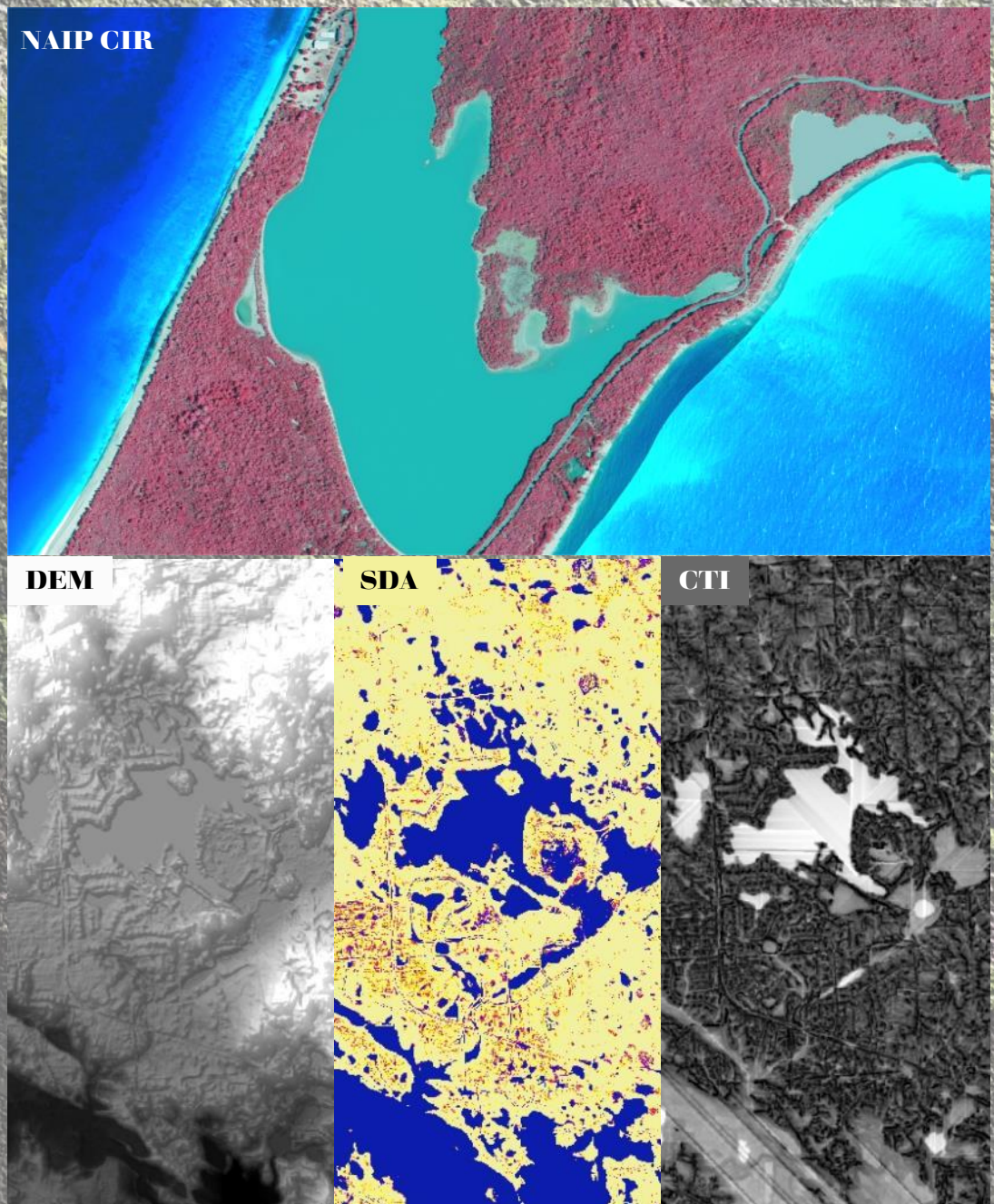
# Methods

1. Collect most recent imagery and ancillary data
2. Field Work
3. Automated Ghut delineation
4. Manual Wetland and Deepwater Delineation
5. Quality Control

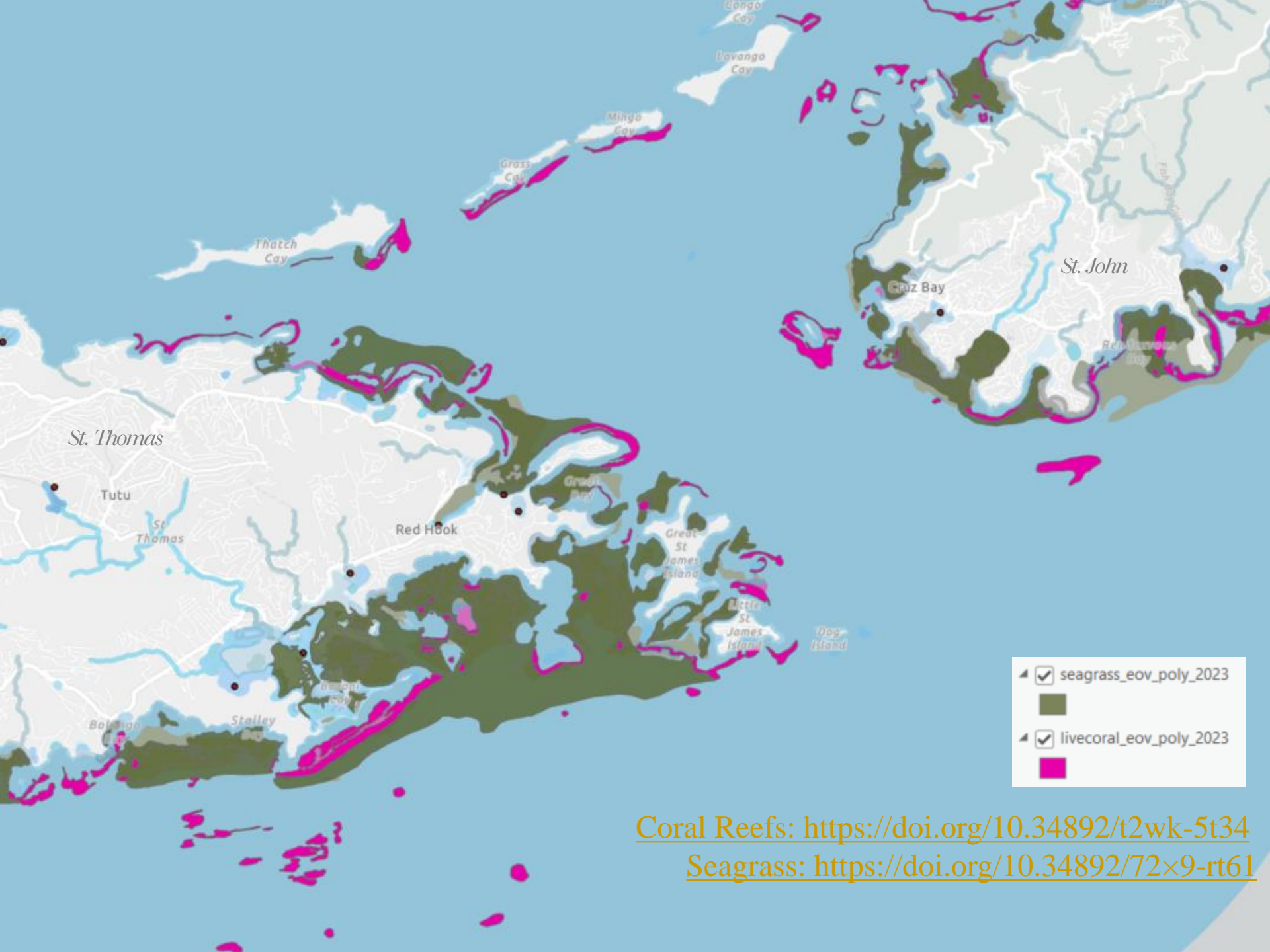


# Imagery and Ancillary Data

- Base imagery is Im 2021 NAIP Color Infrared Imagery
- Ancillary Aerial
  - Google Earth time series
- LiDAR and Derivatives – full project area coverage – Point cloud and Im bare Earth DEM 2018
- EMODnet Seabed Habitats Product and Global Distribution of Coral Reefs







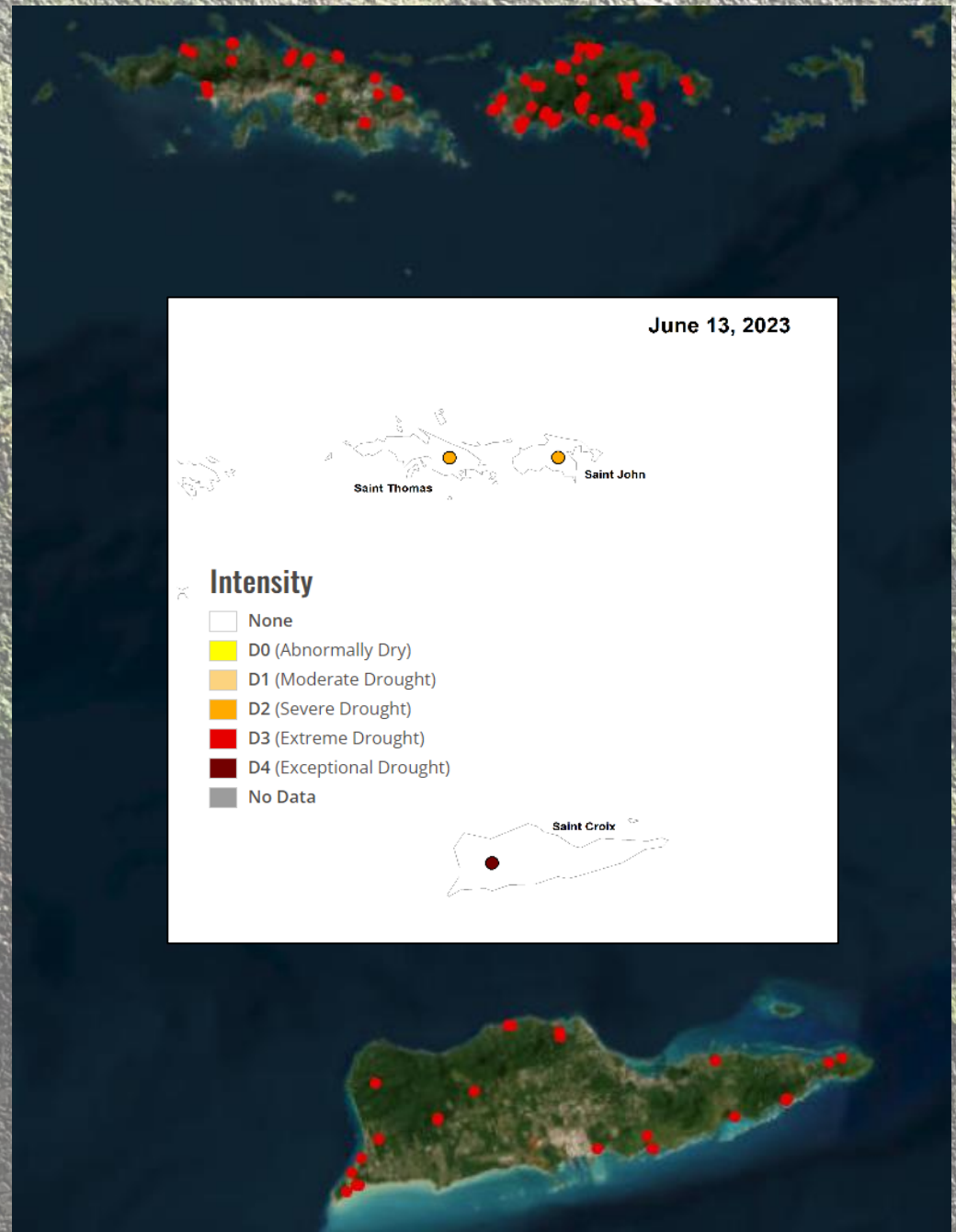
- seagrass\_eov\_poly\_2023
- livecoral\_eov\_poly\_2023

[Coral Reefs: https://doi.org/10.34892/t2wk-5t34](https://doi.org/10.34892/t2wk-5t34)  
[Seagrass: https://doi.org/10.34892/72x9-rt61](https://doi.org/10.34892/72x9-rt61)



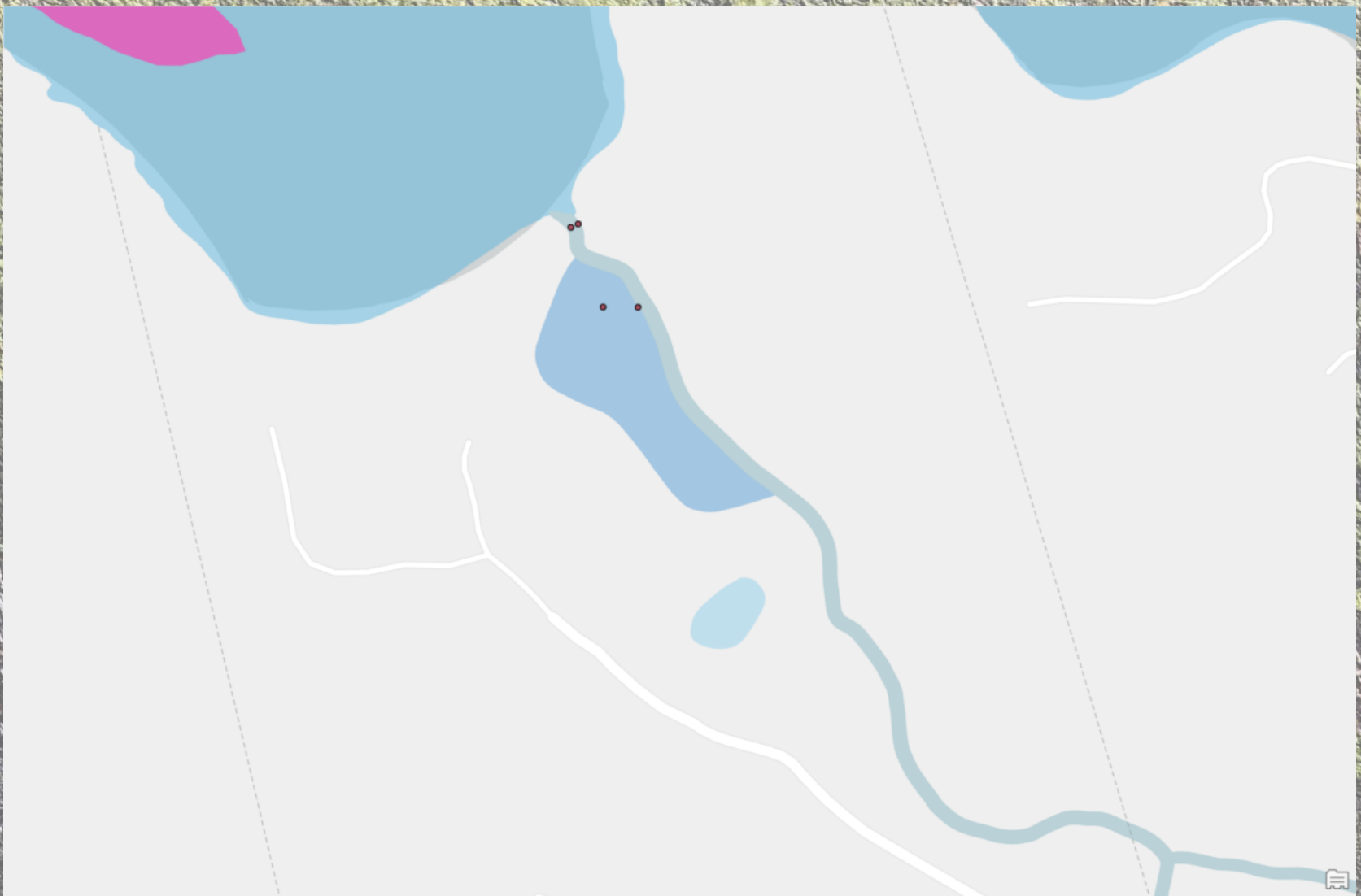
# Field Work (June 11 – 16, 2023)

- ‘Reconnaissance’ of ground conditions via *roadside survey*
- Data collection with mobile devices with GPS location (iPads) and ESRI Field Maps app
- Joined by USVI DPNR and USFWS during fieldwork
- Fieldwork occurred during extreme and exceptional drought conditions.
- Collected 121 points, St. Croix 31, St. Thomas 30, St. John





# Field Points Provided to USFWS



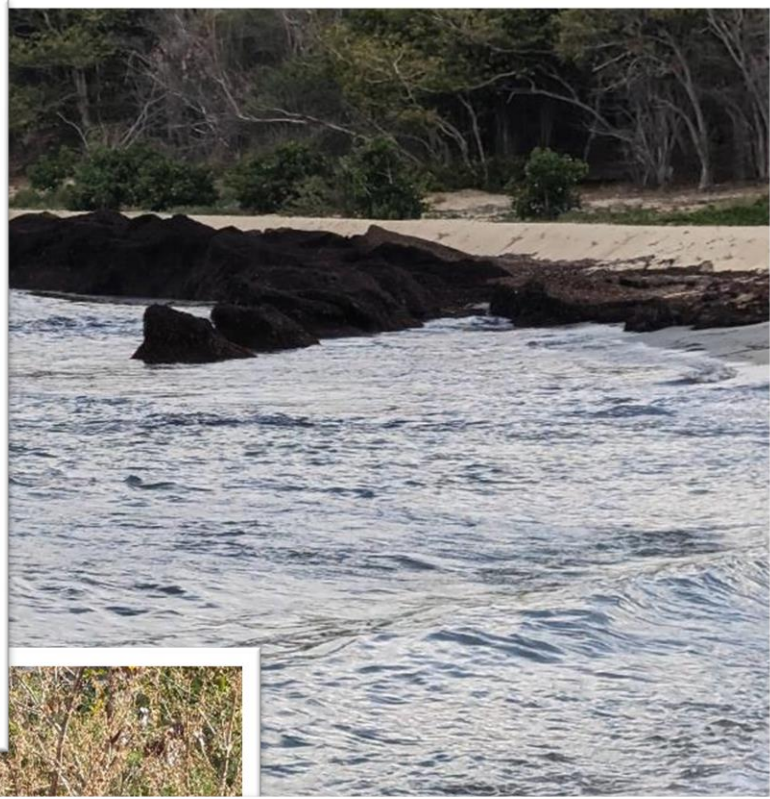
<< Collapse



200 ft



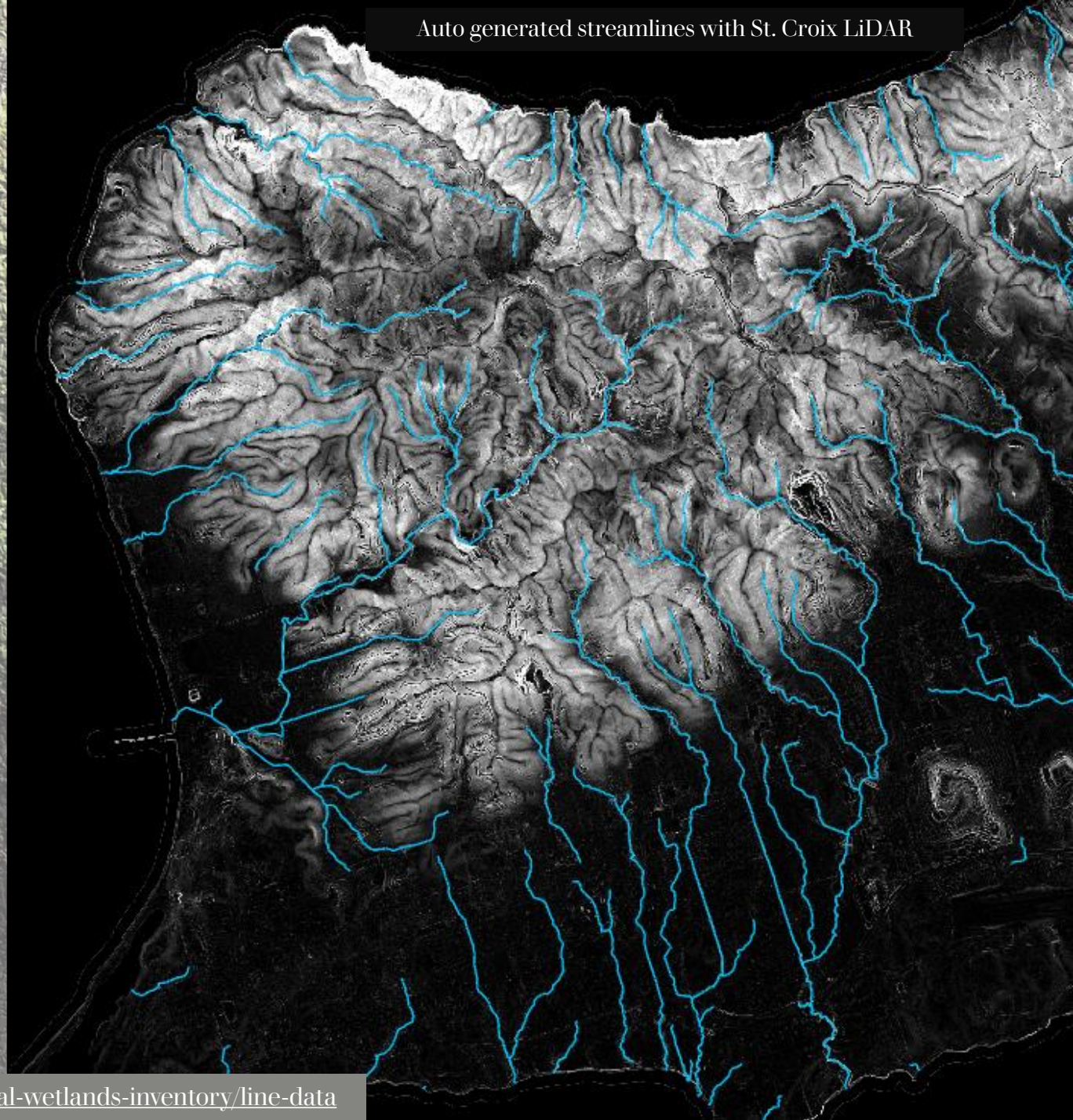
A few field pictures...





# Riverine Features

- Intermittent /ephemeral riverine features (watercourses/ghuts)
- Generated via Elevation Derived Hydrography (EDH)
  - Flowlines generated from DEM
  - Linears buffered to polygons and attributed with a Cowardin classification code (e.g. R4SBC)





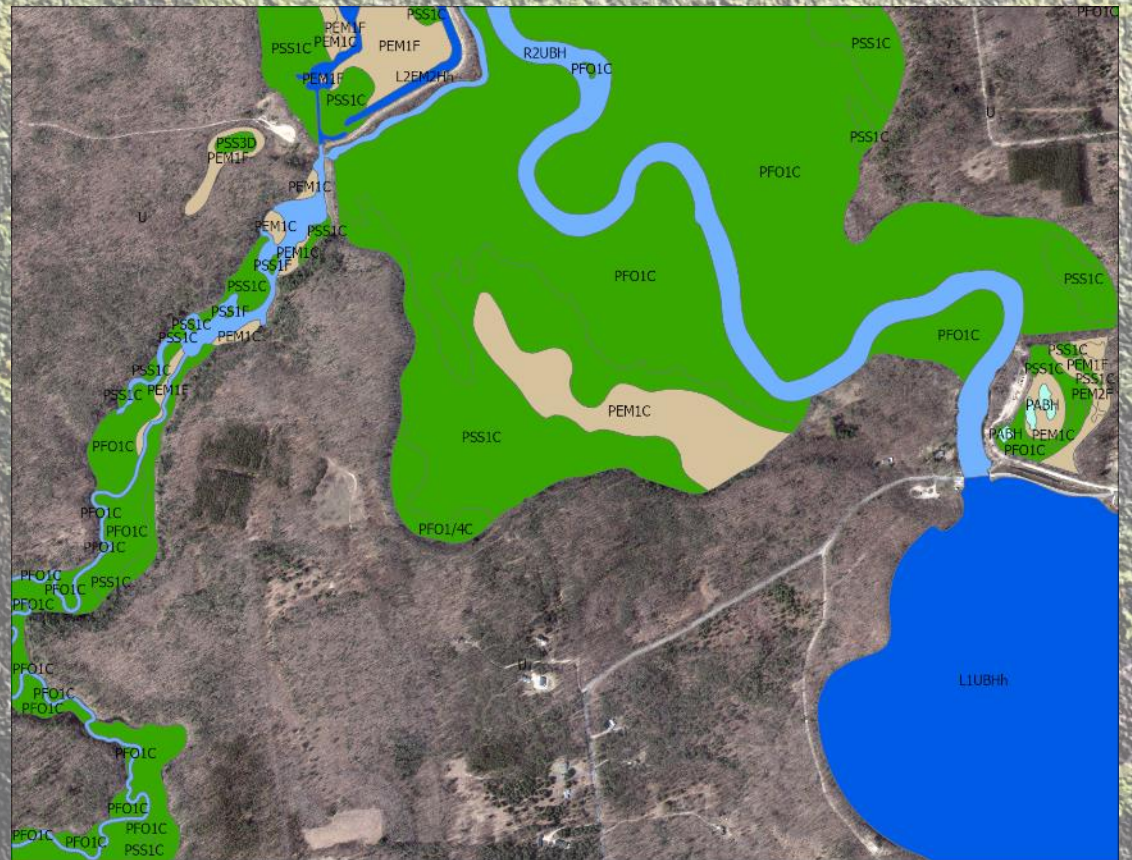
# Photo Interpretation

1. Waterbodies

2. Buffer streamlines;  
clip or merge to  
waterbodies

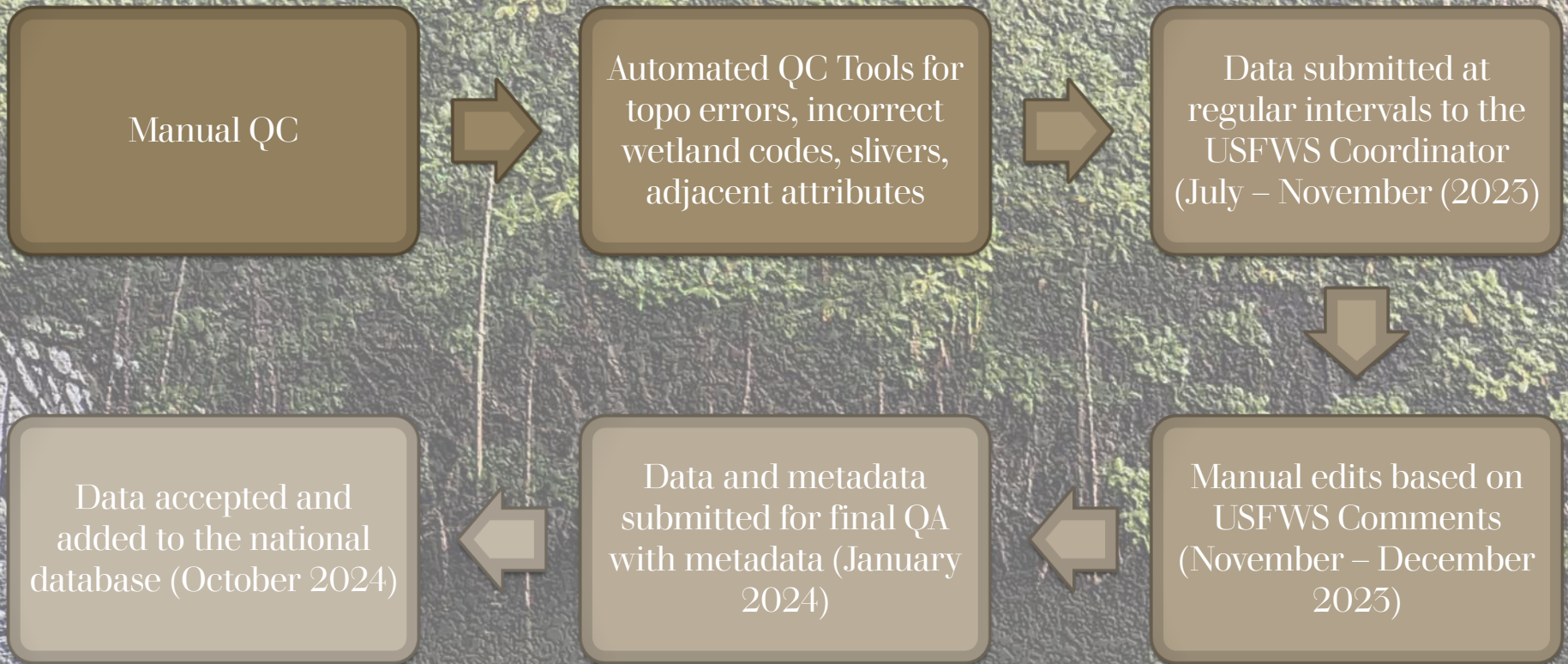
3. Add wetlands  
boundaries; clip  
water features

4. Photo Interpretation  
Refinement and  
Quality Control





# Quality Control

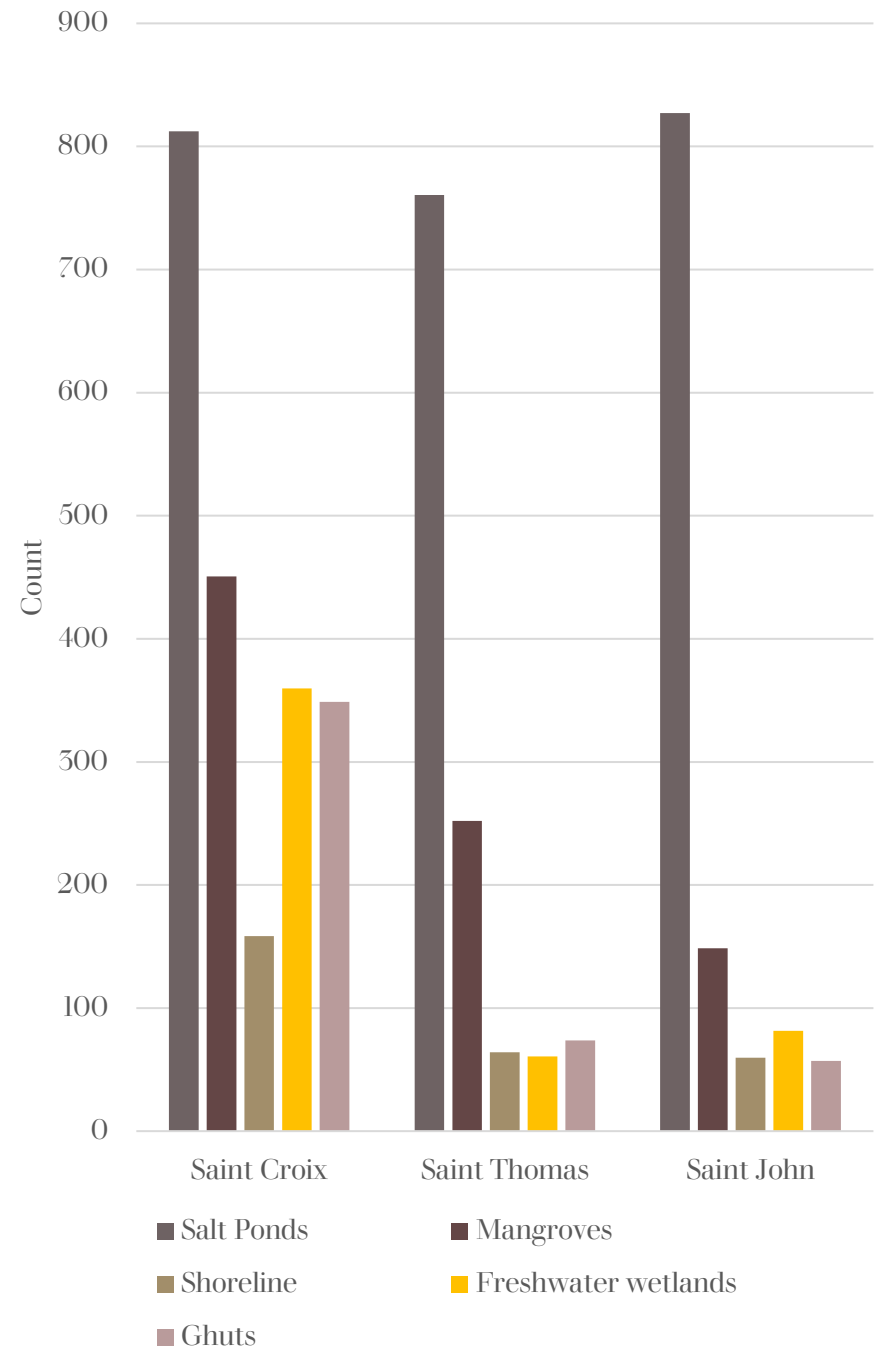




# What was mapped

479.5 acres of 'ghuts'  
 125 acres of freshwater ponds (human-made)  
 235 acres of forested/shrubby wetland  
 80 acres of freshwater emergent wetland  
 65% features are estuarine or marine

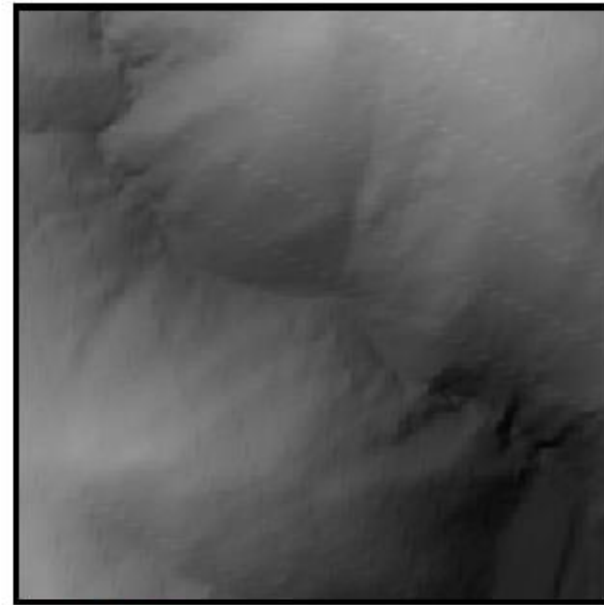
Wetland Type	Count	Acres
Estuarine and Marine Deepwater	754	386995.1
Estuarine and Marine Wetland	443	1545.125
Freshwater Emergent Wetland	125	79.11623
Freshwater Forested/Shrub Wetland	77	235.0998
Freshwater Pond	128	124.7588
Riverine	318	479.5516
Grand Total	1845	389458.8







1.0.1 CIR



1.0.2 DEM



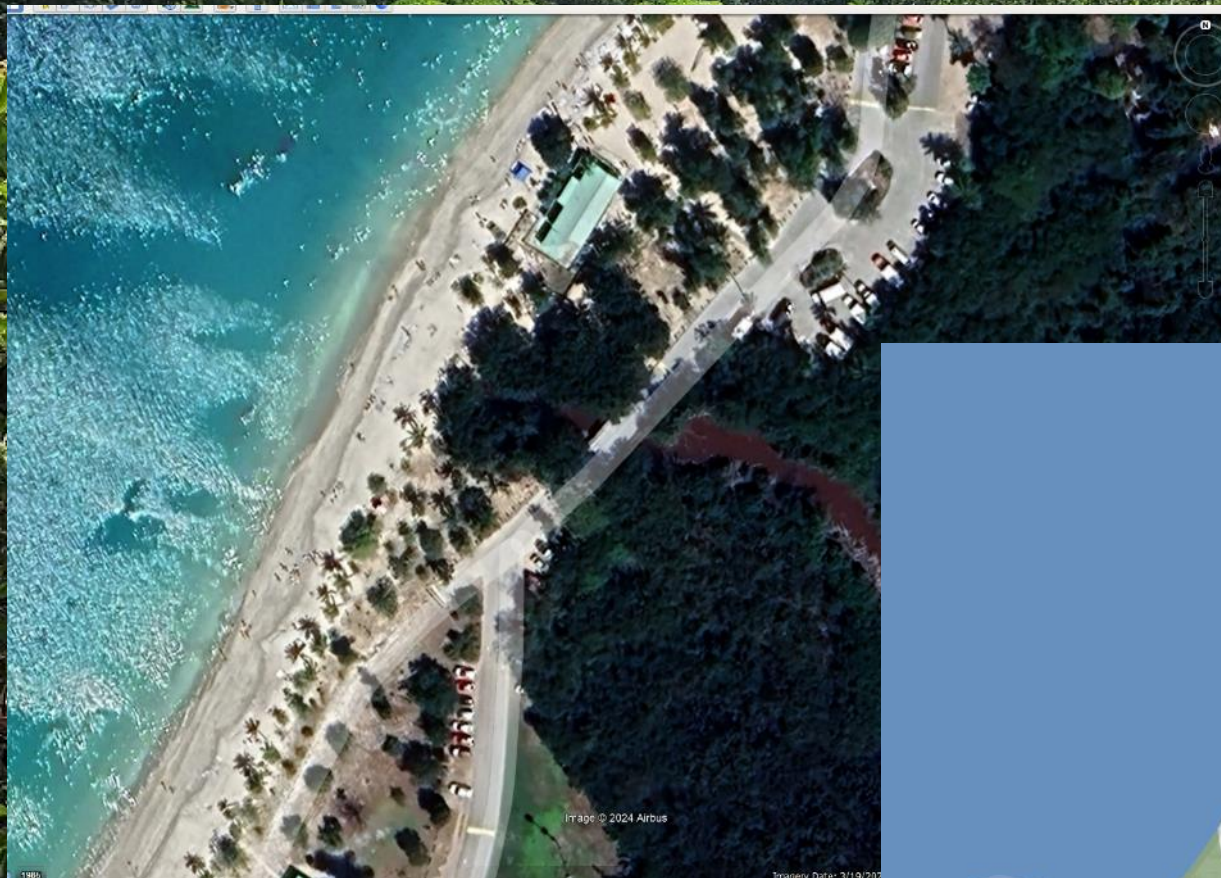
1.0.3 Field Picture

## **Intermittent Riverine, Seasonally Flooded R4USC(x)**

Riverine channels that contain flowing water only part of the year. These ghuts start at high elevations and carry rainwater down to the ocean after large rain events. 467 acres.



# Flooded Ghut, Magens Beach







1.0.1 CIR



1.0.2 DEM



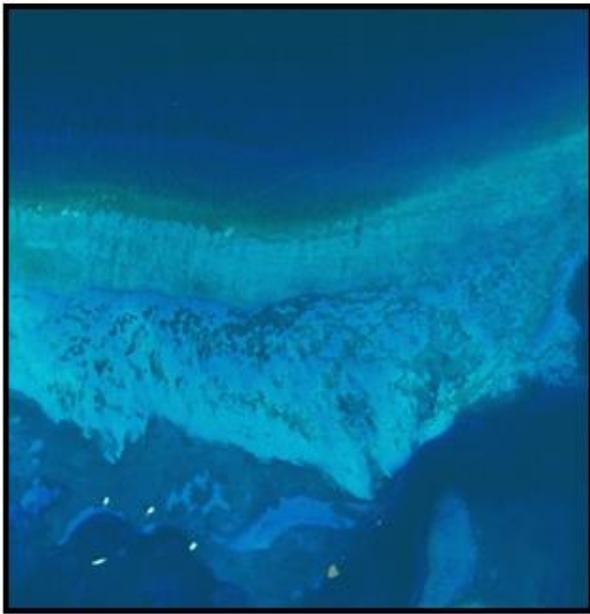
1.0.3 Field Picture

## **M1UBL Subtidal Marine**

Open ocean with  
sand bottom.

366,260 acres





1.0.1 CIR



1.0.2 DEM

## **M1RFL Subtidal Marine**

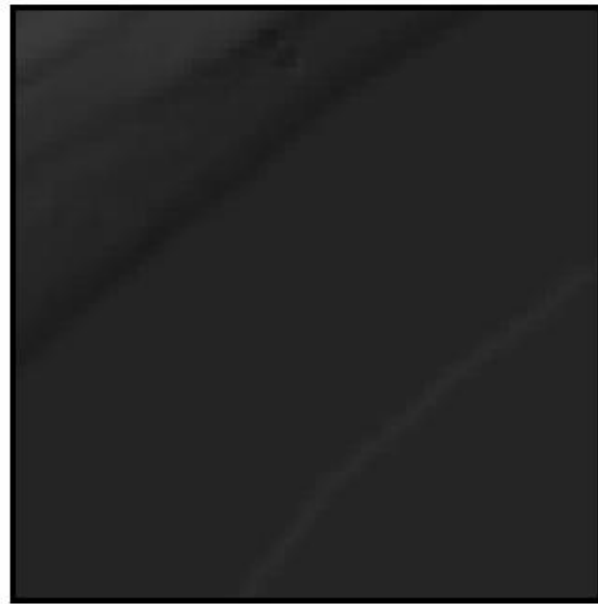
Reefs in open  
ocean.

8,369 acres





1.0.1 CIR



1.0.2 DEM



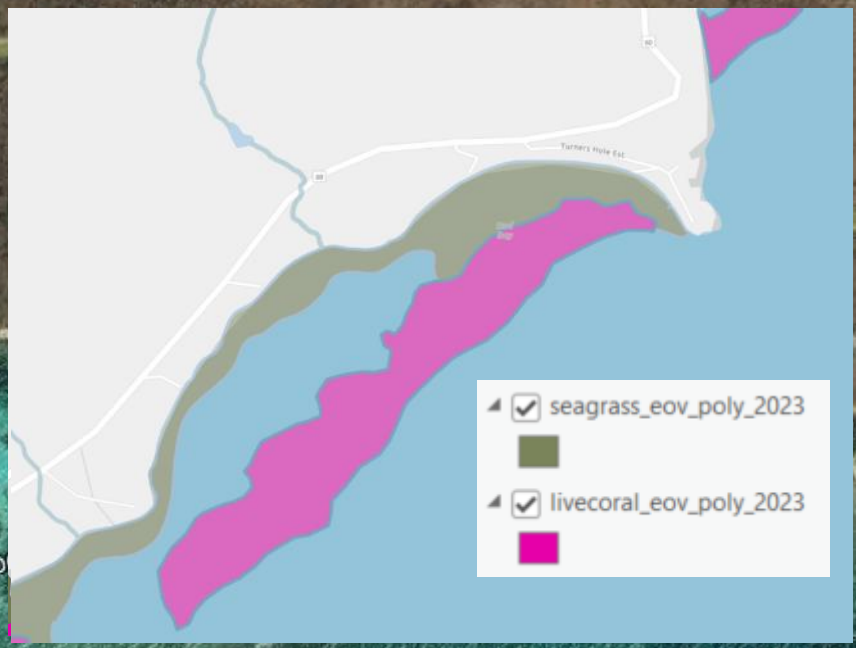
1.0.3 Field Picture

## **M1AB3L**

Seagrass rooted in  
open ocean.  
10,214 acres



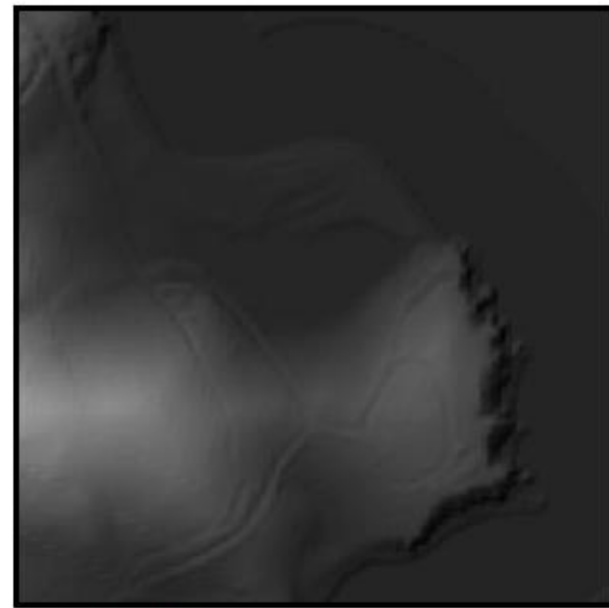
# Seagrass, Woodcottage Bay (St. Croix)







3.0.1 CIR



3.0.2 DEM



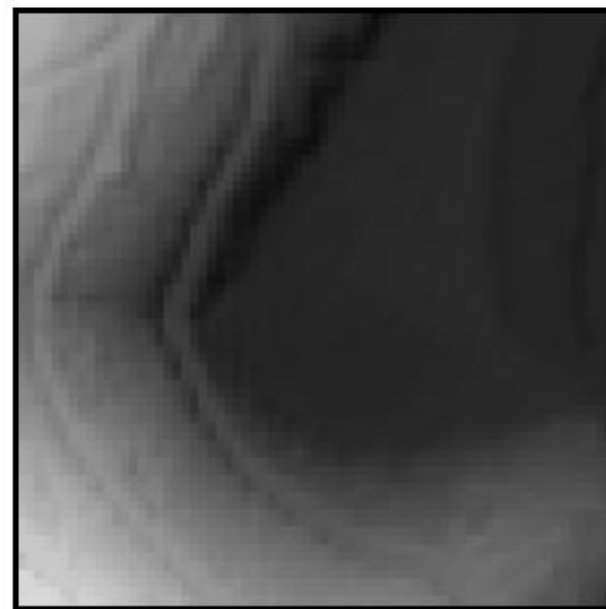
3.0.3 Field Picture

**E1UBL**  
Permanent  
saltwater ponds  
located in flat  
coastal areas.  
689 acres





1.0.1 CIR



1.0.2 DEM



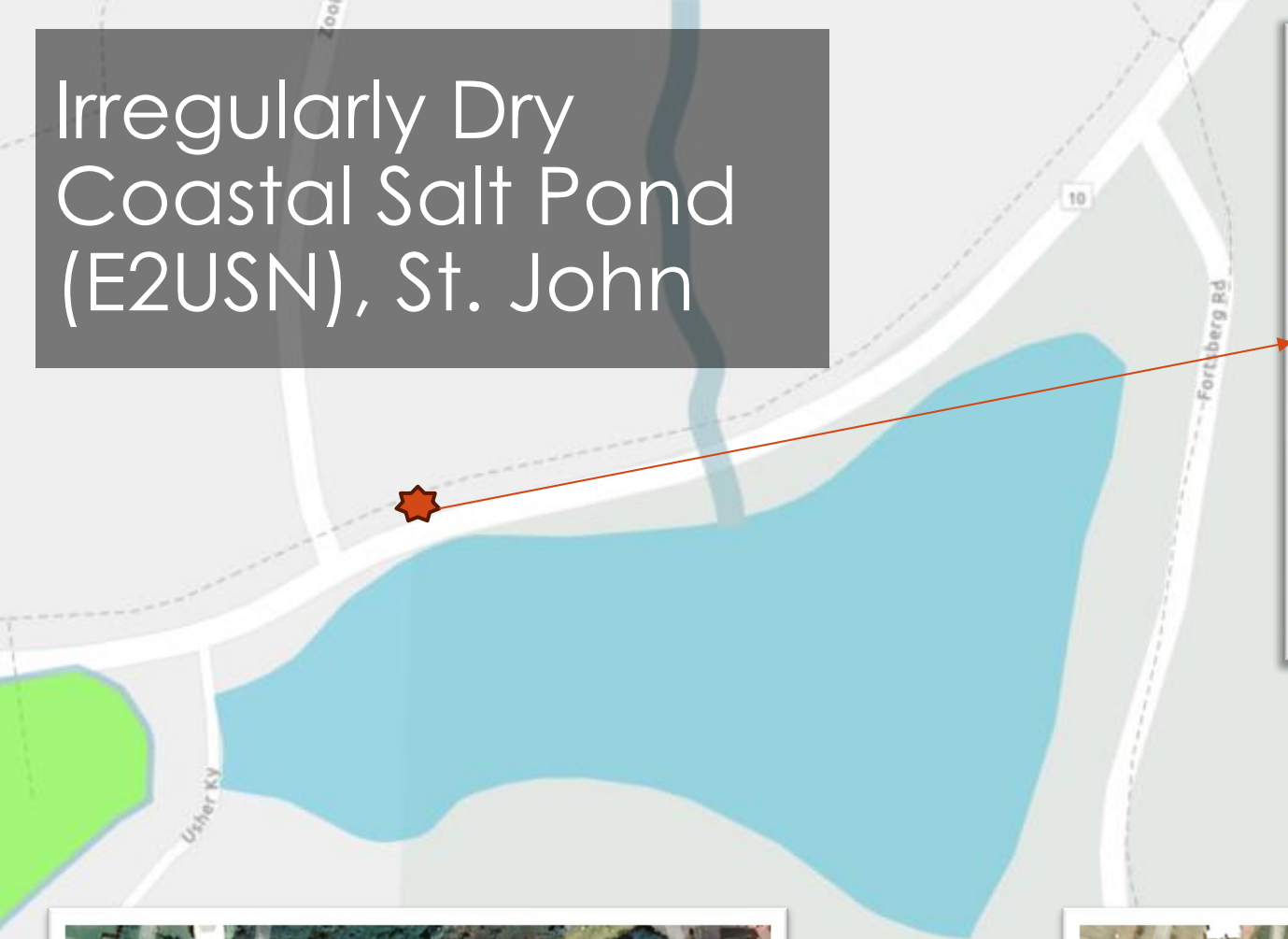
1.0.3 Google Earth Image (3/2021)

## **E2USN/M**

Coastal saltwater ponds that dry up at regular (M), or irregular intervals (N) usually during the dry season. May be able to gauge this in yearly Google Earth Imagery.



# Irregularly Dry Coastal Salt Pond (E2USN), St. John





# Mangroves



White (buttonwood) mangrove  
(*Laguncularia racemosa*)

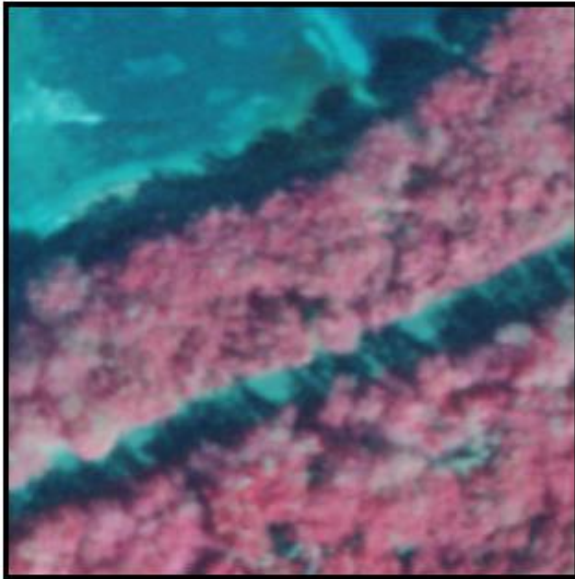


Black mangrove (*Avicennia germinans*)

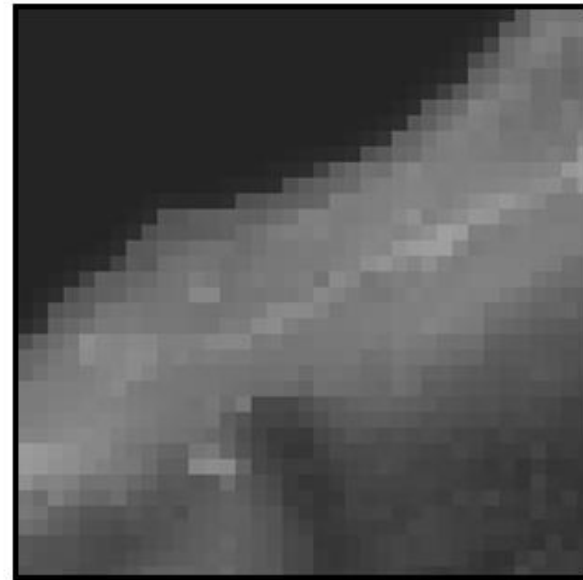


Red mangrove (*Rhizophora mangle*)





1.0.1 CIR



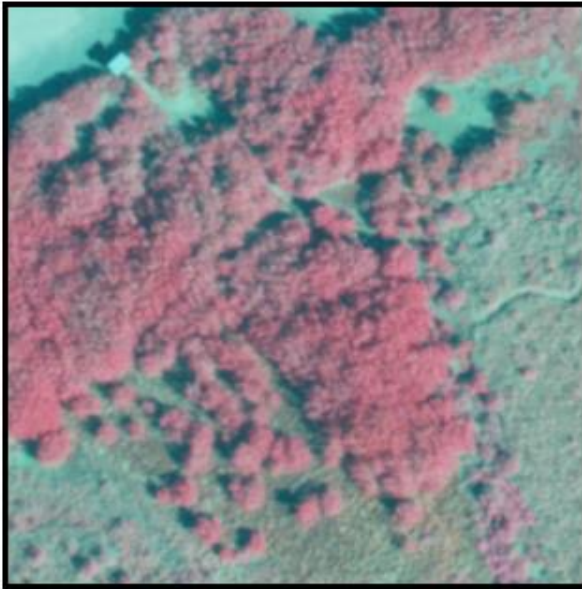
1.0.2 DEM



1.0.3 Field Picture

**E2SS3P**  
Irregularly  
flooded  
(buttonwood  
white) mangrove  
stands 367 acres





1.0.1 CIR



1.0.2 DEM



1.0.3 Field Picture

## **E2SS3N**

Regularly flooded  
mangroves  
(buttonwood, black)  
mangrove stands  
349 acres





1.0.1 CIR



1.0.2 DEM



1.0.3 Field Picture

## **E2SSM**

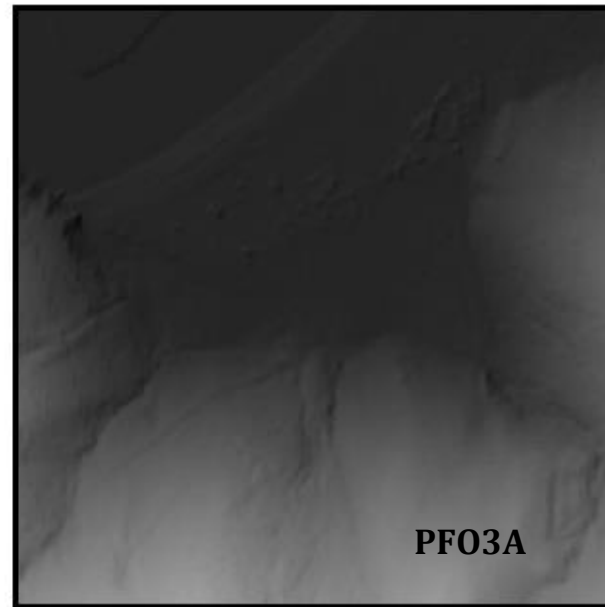
Irregularly exposed  
mangroves (red or  
black)

105 acres





2.2.1 CIR



2.2.2 DEM



2.2.3 Field Picture

## **PFO3A**

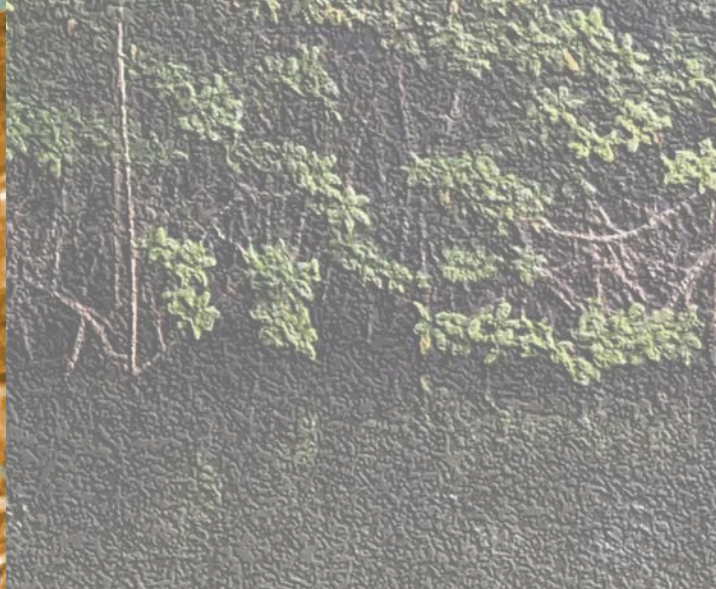
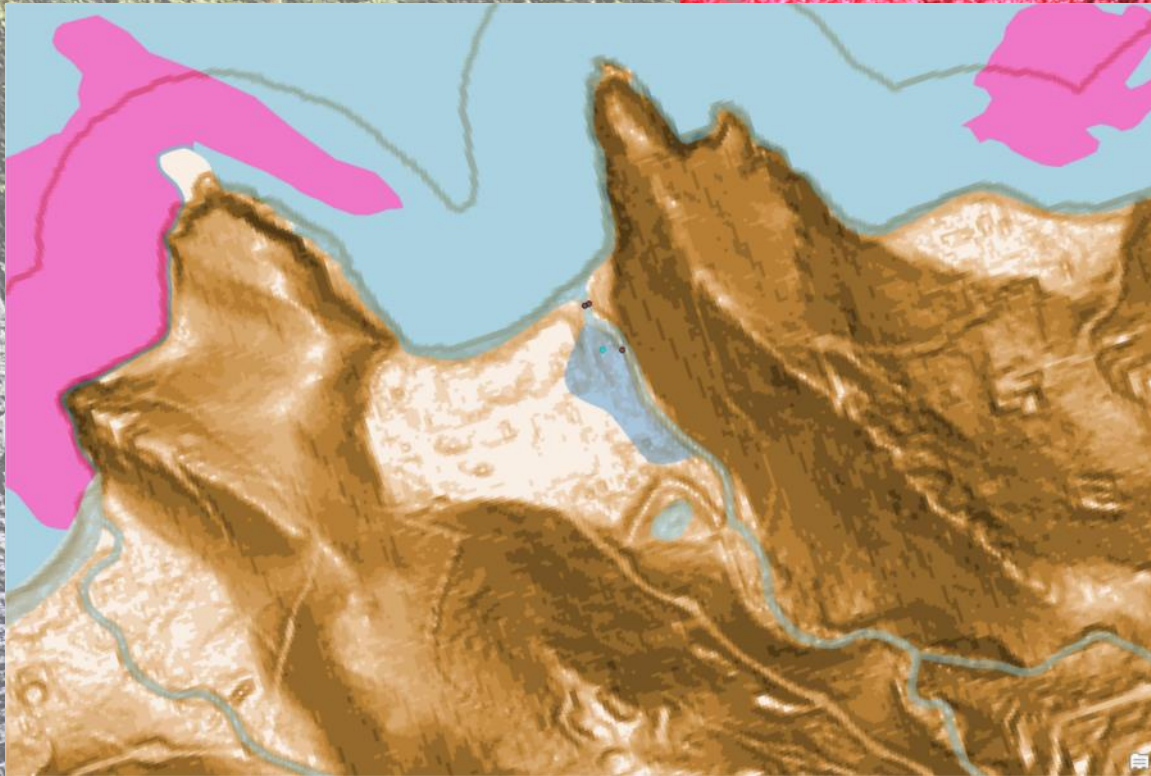
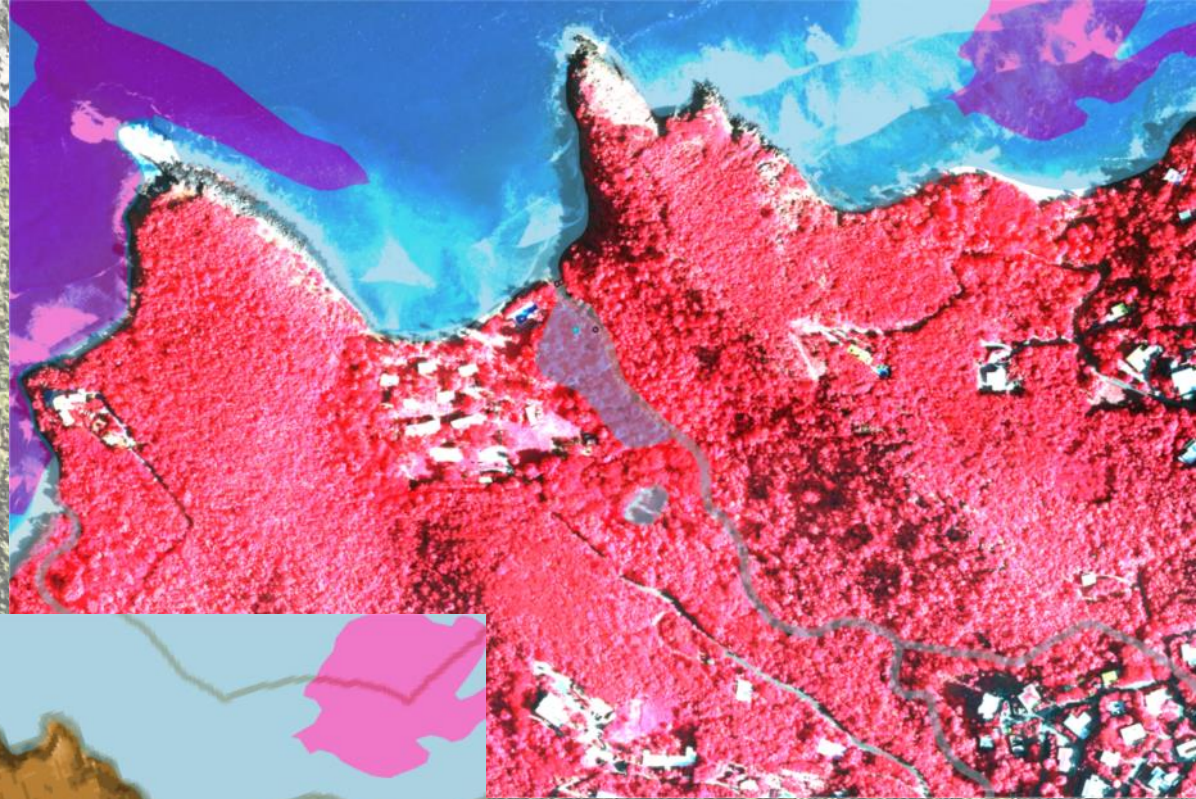
Forested Wetlands  
flooded after large  
rain events. Water  
tolerant non-  
mangrove species  
66 acres







# Slope and NAIP CIR View







2.0.1 CIR



2.0.2 DEM

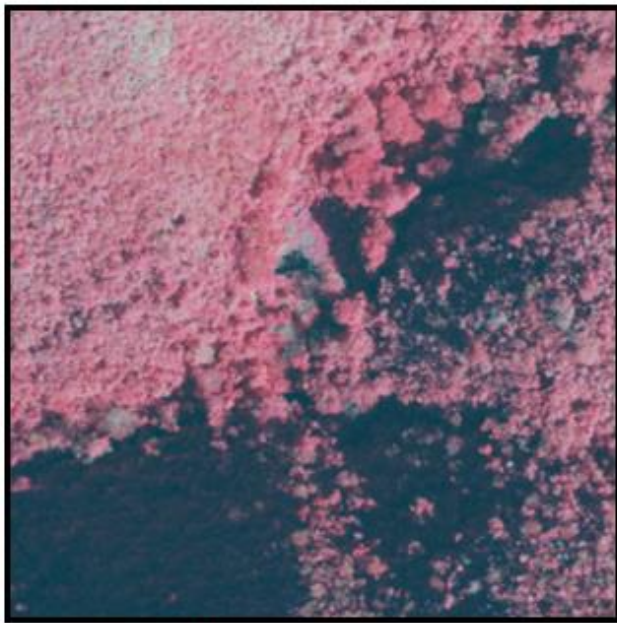


2.0.3 Field Picture

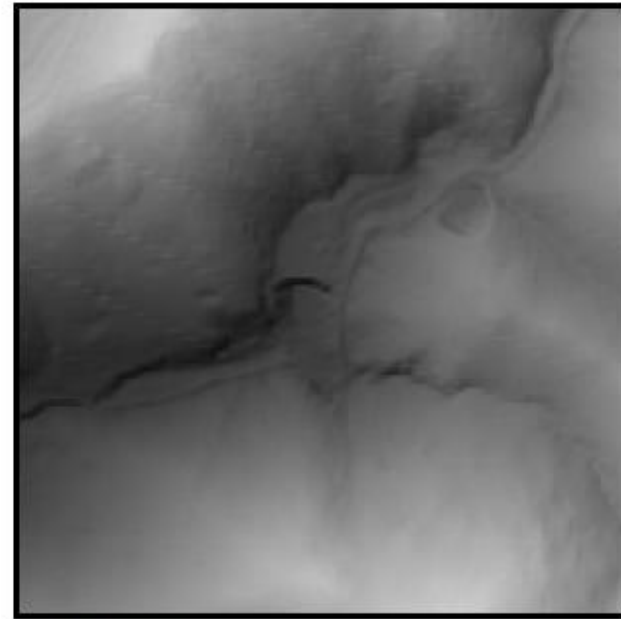
**PUBHx or PUBHh**  
Excavated or  
impounded freshwater  
ponds.

48 acres





2.1.1 CIR



2.1.2 DEM



2.1.3 Field Picture

**PUBCx or PUBCh**  
Seasonally flooded  
ponds, often in dammed  
portions of ghats

70 acres



Thank you!









**Table 4. TMU and PA<sup>+</sup> Requirements**

	<b>Lower 48 States, Hawaii, &amp; Territories *</b>	<b>Estuarine &amp; Lacustrine Deepwater **</b>	<b>Alaska (Including Deepwaters)</b>
<b>TMU</b>	0.5 acres (0.2 ha)	1.0 acres (0.4 ha)	5.0 acres (2.0 ha)
<b>Feature Accuracy (Wetland Identification)</b>	98%	98%	98%
<b>Attribute Accuracy (FGDC Wetlands Classification)</b>	85%	85%	85%

**Table 5. Horizontal RMSE Accuracy Requirements**

	<b>Lower 48 States, Hawaii, &amp; Territories *</b>	<b>Estuarine &amp; Lacustrine Deepwater **</b>	<b>Alaska (Including Deepwaters)</b>
<b>Horizontal RMSE Accuracy</b>	5m	15m	25m

\*Includes the lower 48 states, Hawaii, District of Columbia, Trust Territories, Puerto Rico, and the Virgin Islands. Estuarine and lacustrine deepwater habitats are excluded. Alaska is also excluded.

\*\*Includes the Estuarine and Lacustrine deepwaters of the lower 48 states, Hawaii, District of Columbia, Trust Territories, Puerto Rico, and the Virgin Islands. Alaska is excluded.





Great Pond Byp

Southshore Rd  
Magen's Bay Rd

David Oliver Dr

Tamarind Dr

Corry Dr

Sunset Dr

Sea View Dr

Southshore Rd

Great Pond

Great Pond Bay

62

624

Hill St

Hill St

Southside Rd