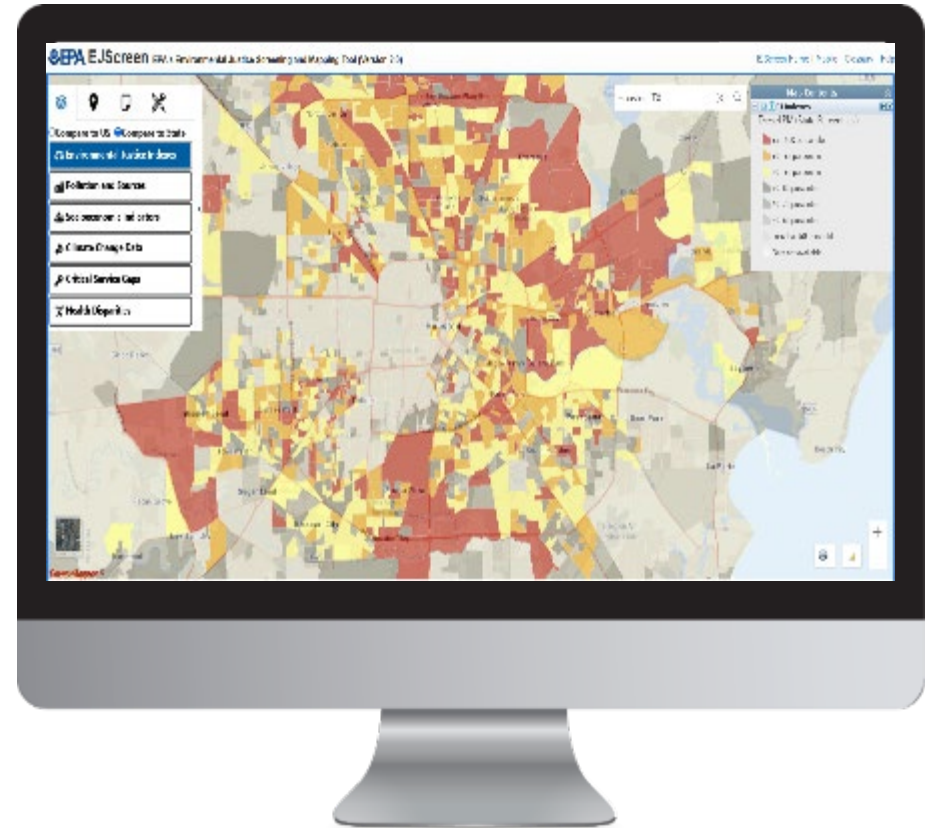


EJScreen EPA's Environmental Justice Screening Tool



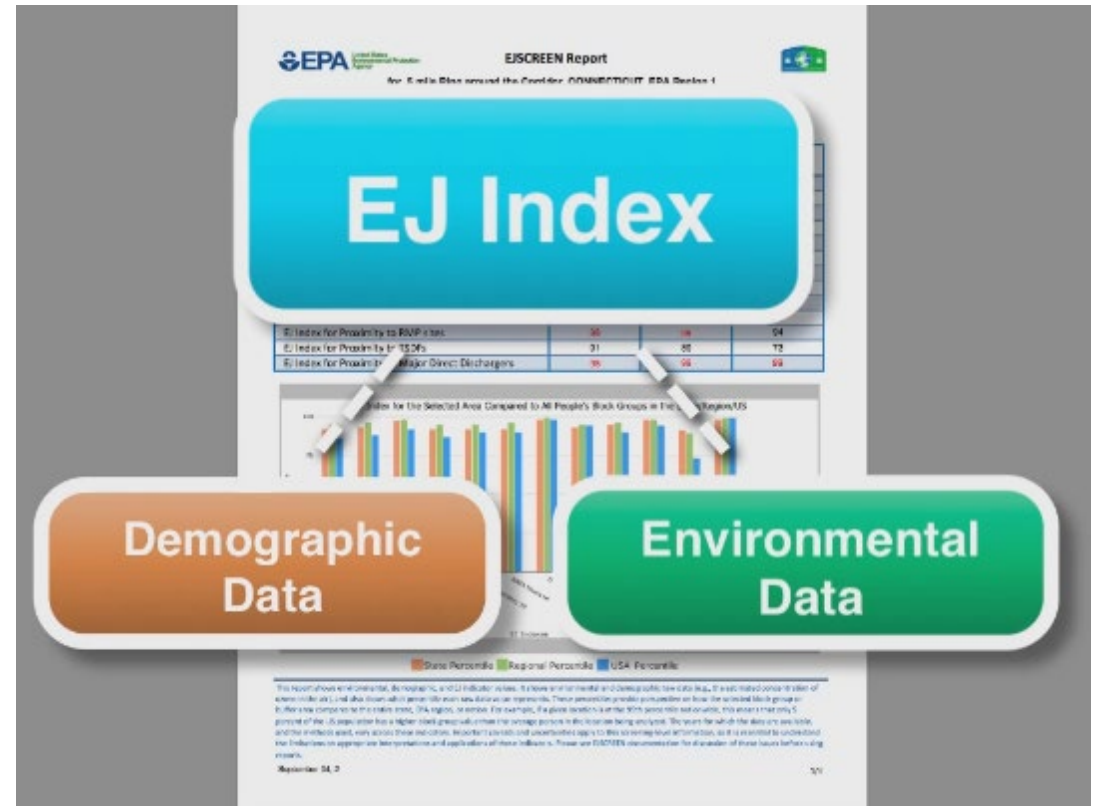
What is EJScreen?

- EPA's web-based GIS tool for nationally consistent EJ screening and mapping
- Combines environmental and socioeconomic data to highlight areas where vulnerable populations may be disproportionately impacted by pollution
- Starting point for agency considerations of environmental justice



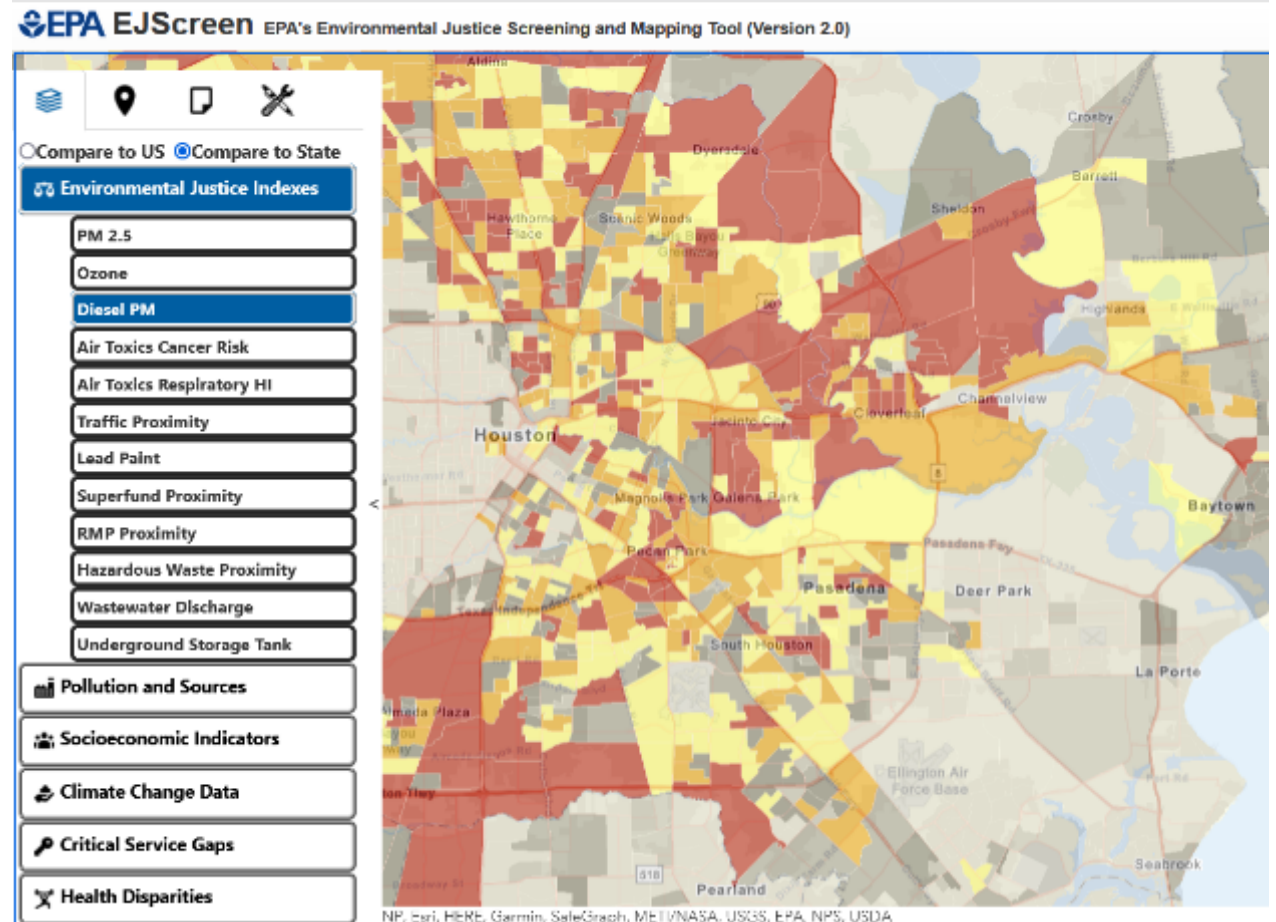
Primary EJScreen Datasets

- **EJ Indexes (12)**
- **Supplemental Indexes (12)**
- **Environmental (12 indicators)**
- **Socioeconomic (7 indicators)**
- **Health (3 indicators)**
- **Climate (6 indicators)**
- **Critical Service Gaps (3 indicators)**



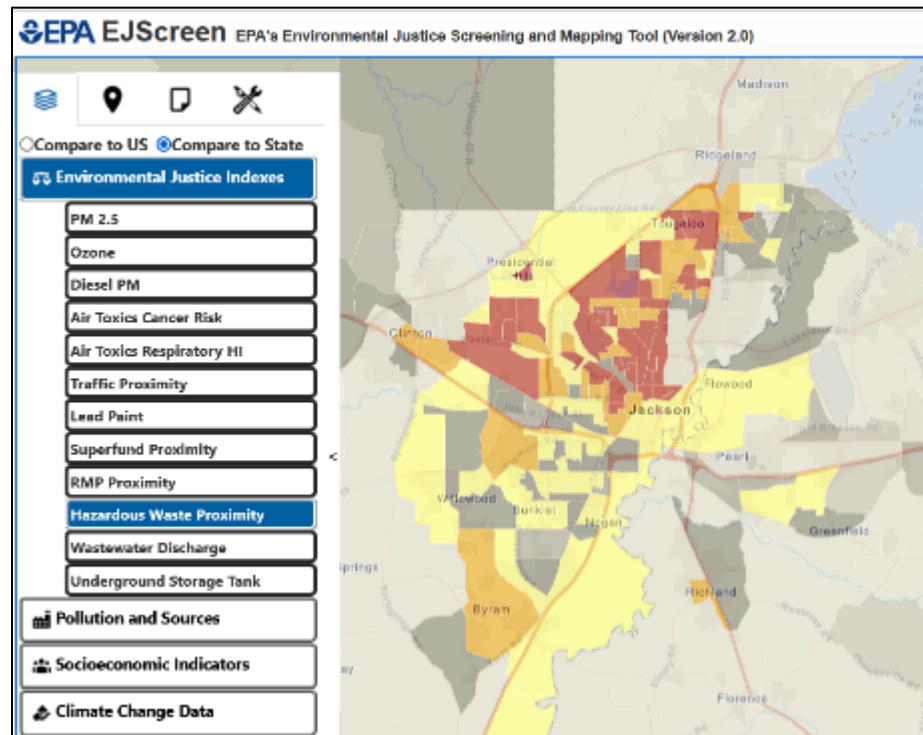
EJScreen Key Features

- Annually updated environmental data
- Annually updated demographics – from most recent U.S. Census Bureau American Community Survey (ACS)
- Highest resolution data available
- Ability to download data
- Accessibility / ease of use



Viewing EJScreen Data

You can view the data within reports or on maps.



EPA EJSCREEN Report
For 1 mile Ring Centered at 33.828864, -118.83191, CALIFORNIA, EPA Region 9
Approximate Population: 23624

Selected Variables	Raw Data	State Avg.	Mile in State	EPA Region Avg.	Mile in EPA Region	USA Avg.	Mile in USA
Environmental Indicators							
Particulate Matter (PM 2.5 in $\mu\text{g}/\text{m}^3$)	13.3	10.8	84	10.3	87	10.7	86
Ozone (ppb)	41.8	51.8	19	52.4	15	45.3	23
NATA Diesel PM ($\mu\text{g}/\text{m}^3$) [*]	2.87	1.39	87	1.2	80-90th	0.824	90-95th
NATA Cancer Risk (lifetime risk per million) [*]	130	70	92	69	90-95th	49	95-100th
NATA Respiratory Hazard Index [*]	7.4	3.9	98	3.5	95-100th	2.3	95-100th
NATA Neurological Hazard Index [*]	0.18	0.072	98	0.068	95-100th	0.063	95-100th
Traffic Proximity and Volume (daily traffic count/distance to road)	810	210	81	190	92	110	98
Lead Paint Indicator (% pre-1980 housing)	0.57	0.3	78	0.28	82	0.3	79
MFL Proximity (1/2 mile count/m distance)	0.085	0.13	61	0.11	66	0.099	71
RMP Proximity (facility count/m distance)	1.1	5.48	90	0.41	91	0.31	94
TSDP Proximity (facility count/m distance)	0.51	0.13	98	0.12	98	0.054	98
Water Discharger Proximity (facility count/m distance)	0.33	0.18	88	0.19	87	0.25	81
Demographic Indicators							
Primary Demographic Index	47%	47%	50	46%	53	35%	71
Minority Population	71%	60%	58	57%	62	30%	80
Low Income Population	23%	35%	36	30%	36	34%	36
Legally Isolated Population	7%	11%	48	10%	53	5%	78
Population With Less Than High School Education	13%	20%	45	10%	48	15%	55
Population Under 5 years of age	5%	7%	33	7%	34	7%	36
Population over 64 years of age	16%	12%	77	12%	75	13%	69

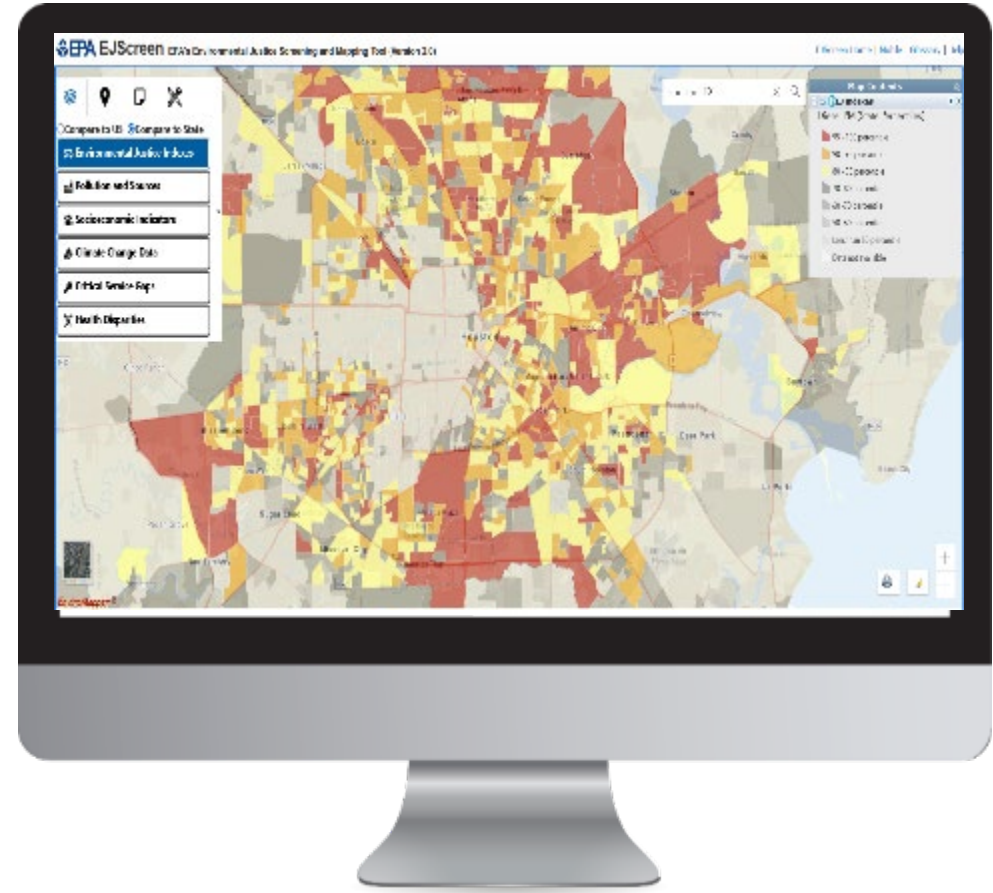
^{*} The National Scale Air Toxics Assessment (NSATA) is EPA's ongoing, comprehensive evaluation of air toxics in the United States. EPA developed the NSATA to prioritize air toxics, emission sources, and locations of interest for further study. It is important to remember that NSATA provides broad estimates of health risks over geographic areas of the country, not definitive risks to specific individuals or locations. More information on the NSATA analysis can be found at: <http://www.epa.gov/nsata/nsatamain/index.html>

A map gives you one indicator at a time, for each of the block groups within a wider area (e.g. across several miles)

A standard report gives you all the indicators at once for a single specified location

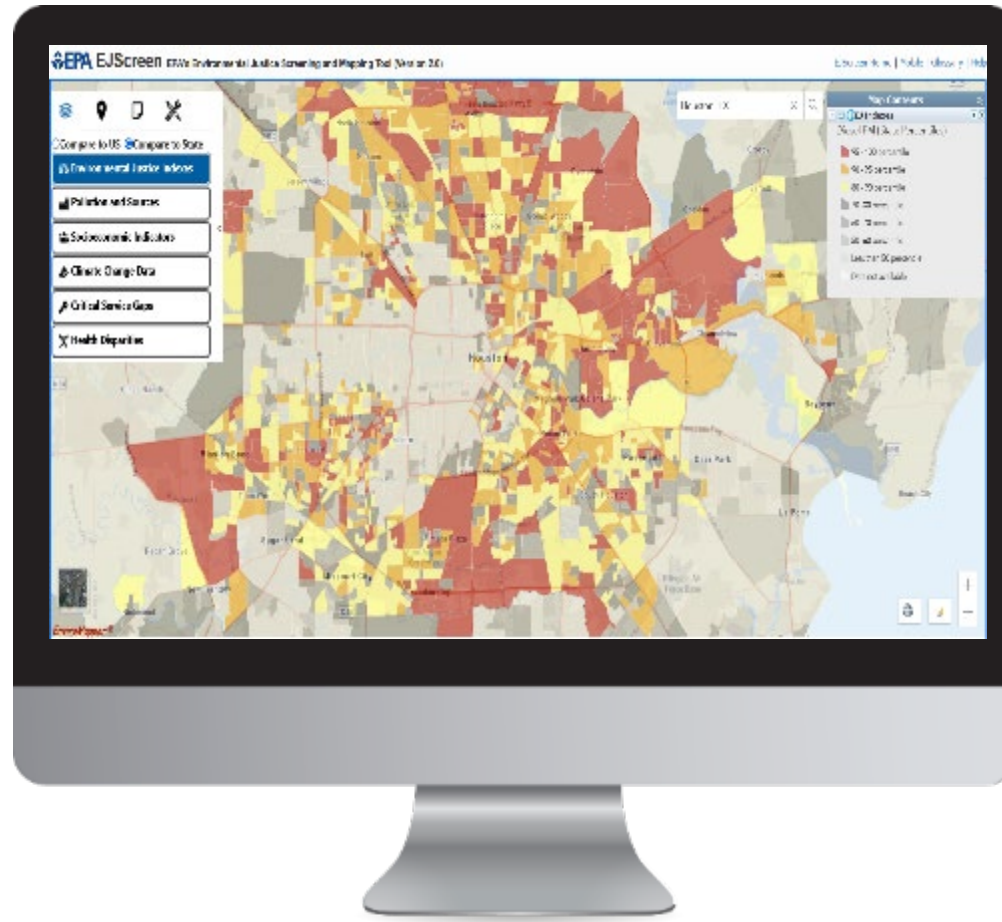
EJScreen Resources

- [EJScreen website](#)
- [Trainings and Office Hours](#)
 - Recordings of EJScreen 2.1 Trainings
 - Public Office Hours
 - Feb. 22th at 12 p.m. E.T.



[Click to access EJScreen Tool](#)

LIVE DEMO



[Click to access EJScreen Tool](#)

Climate and Economic Justice Screening Tool (CEJST)

- In [Executive Order 14008](#) on *Tackling the Climate Crisis at Home and Abroad*, President Biden directed the Council on Environmental Quality (CEQ) to create a [Climate and Economic Justice Screening Tool \(CEJST\)](#)
- CEJST's clear and singular purpose is to help Federal agencies **identify disadvantaged communities** that have been historically marginalized, underserved, and overburdened by pollution for the purposes of implementing the **Justice40 Initiative**
 - Where to direct at least 40% of the overall benefits of certain Federal investments

CEJST & EJScreen

Similarities

- CEJST is largely based on the same datasets featured in EJScreen.
 - socioeconomic, environmental, climate & health indicators
- Ten environmental and climate datasets featured as criteria in CEJST are pulled directly from EJScreen
- Obvious extensive overlap in terms of geographies highlighted by both tools

Key Differences

- EJScreen features block group level refinement while CEJST is at the tract level
- CEJST only provides tract level data and does not provide user-driven analytical capacities
 - E.g., no user-defined areas
- CEJST does not incorporate race/ethnicity into methodology
- CEJST is a labeling tool (“**disadvantaged community**”), while EJScreen does not label communities

Questions?

Contact Information

Matthew T. Lee

Office of Environmental Justice and External Civil Rights

Lee.Matthew@epa.gov