



Buena Vista Rancheria of Me-Wuk Indians Wetlands Inventory, Monitoring, and Assessment Program

March 1, 2023

Emily Moloney – Water Program Coordinator

and

Hannah Savage – Wetland/Traditional Ecological Knowledge Program Coordinator

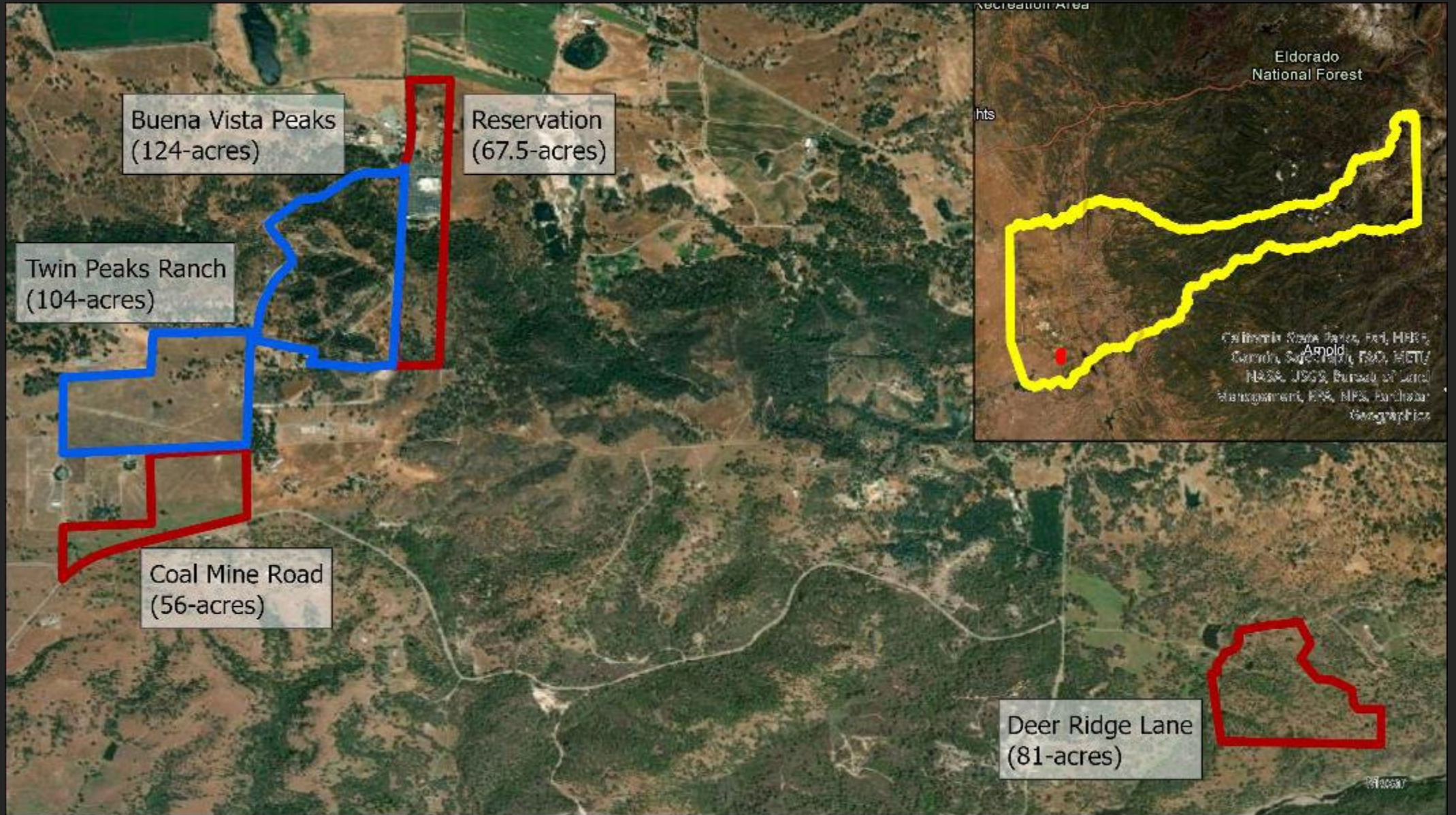
A landscape photograph showing a wetland area. In the foreground, there are tall, green grasses and some shrubs. In the middle ground, there are more green bushes and a line of trees. In the background, there are rolling hills under a clear blue sky. The overall scene is bright and sunny.

Outline

- Intro to Buena Vista Tribal lands
- Background on the BVR Wetland Program Development
- Wetland Inventory, Monitoring, and Assessment Strategy (WIMA)
- Baseline wetland data collection and preliminary findings

Buena Vista Rancheria

67.5-acre Reservation and growing to 433-acres with recent acquisitions

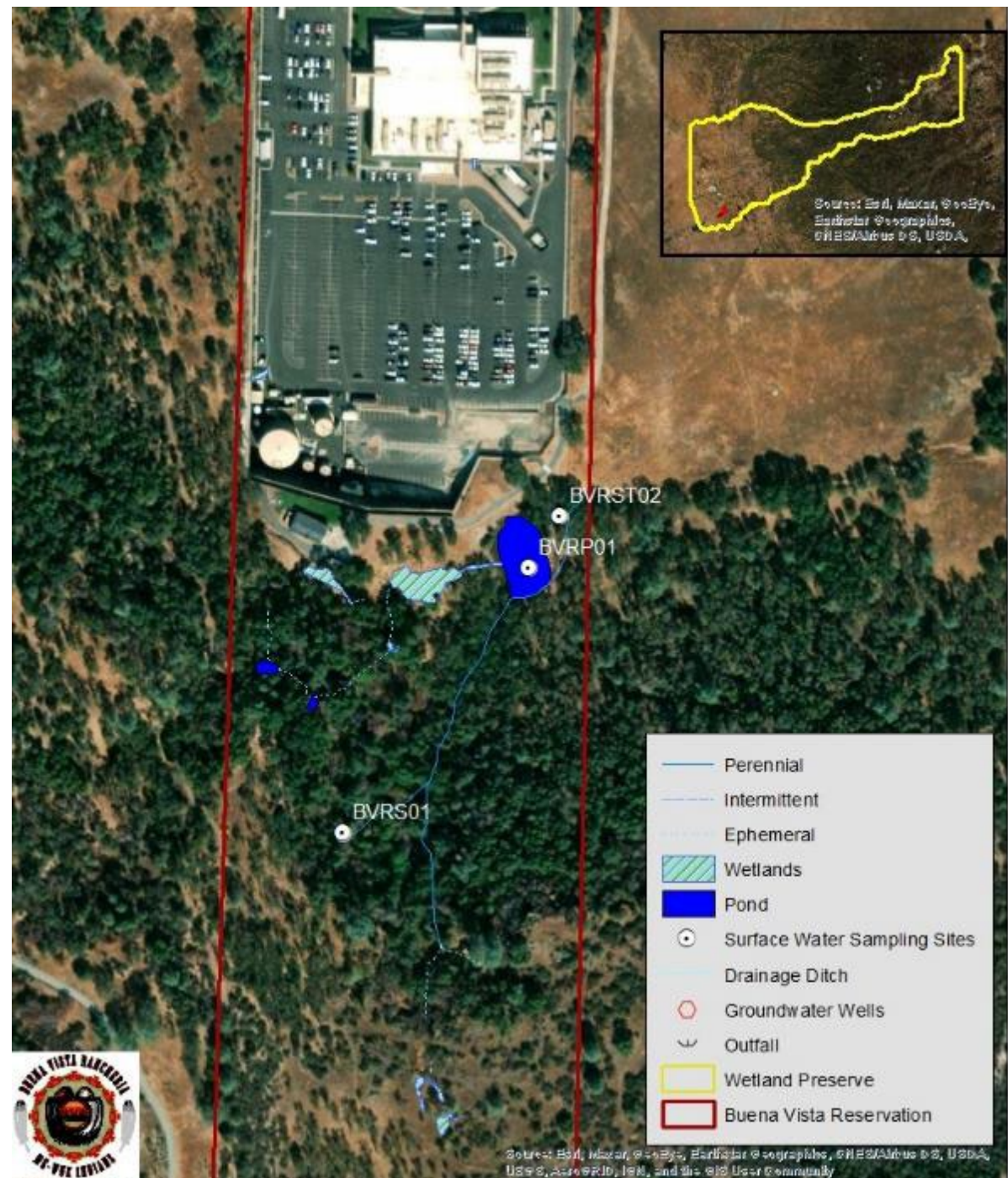




Eco-Cultural Significance of Wetlands

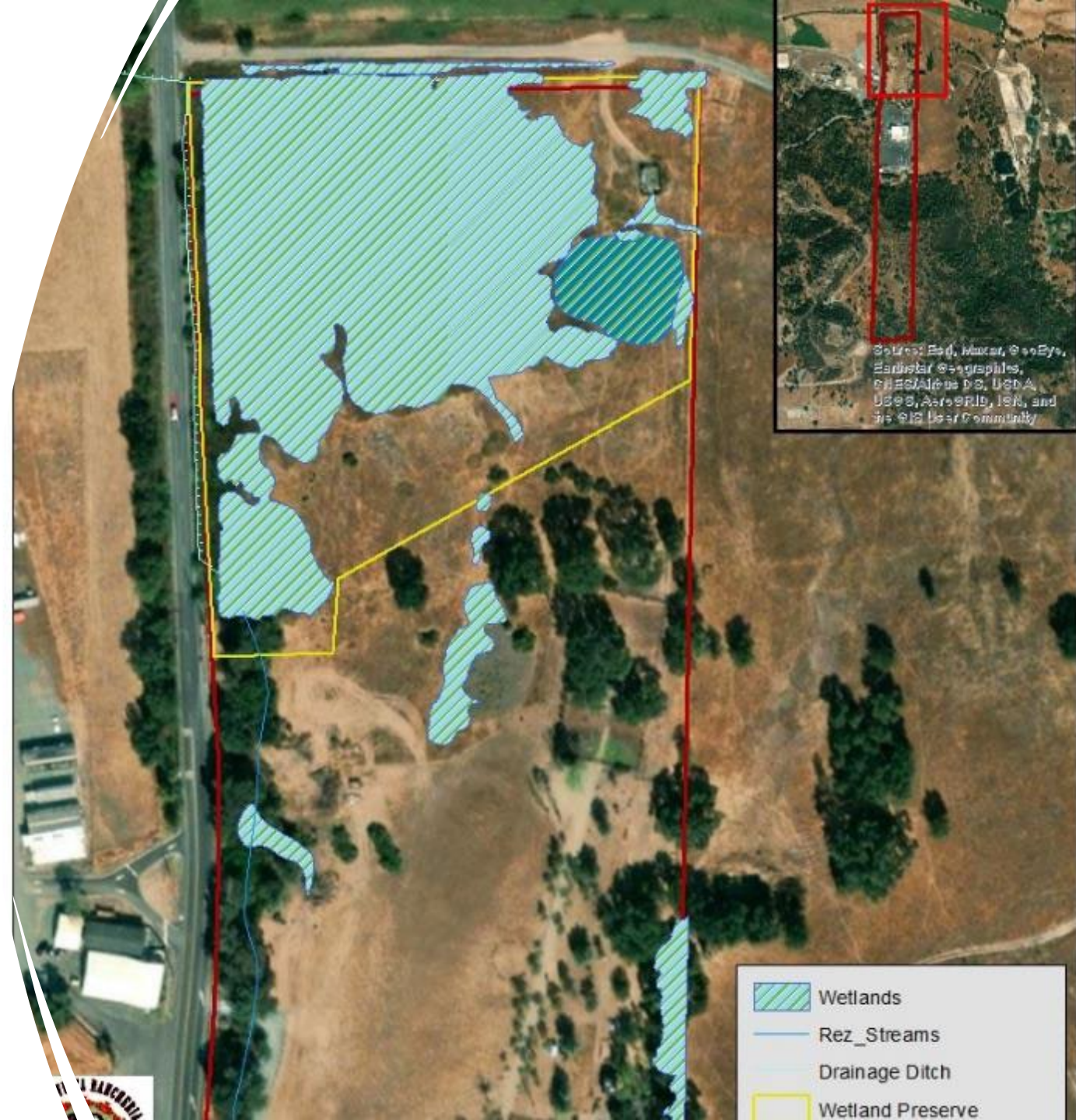
- Food and Medicine
- Construction Materials: tule boats, sweat lodge, baskets, cordage, regalia...& so much more
- Habitat for plants and animals including culturally significant species
- Ecological values
 - Groundwater recharge
 - Nutrient cycling
 - Water filtration





Wetland Program Background

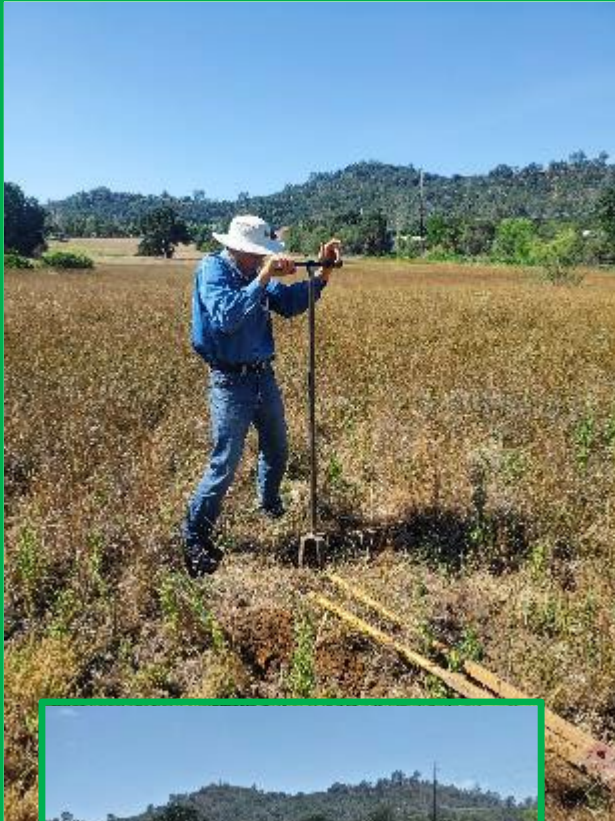
- BVR applies for WPDG in 2018-2020 to develop its Wetland Program Plan (WPP)
- WPP outlines 5-year strategy outlines our goals and actions using the EPA core element framework
- 2022-2023 wetland grant written to develop BVR WIMA program and collect baseline data



Inventory, Monitoring, and Assessment strategy

- Level 1- landscape level (inventory)
 - ❖ CARI, EcoAtlas, USGS EarthExplorer, wetland delineation training
- Level 2- rapid assessment (assessment and monitoring)
 - ❖ CRAM
- Level 3- intensive site assessment (assessment and monitoring)
 - ❖ Water quality, plant surveys, aquatic invertebrate surveys...





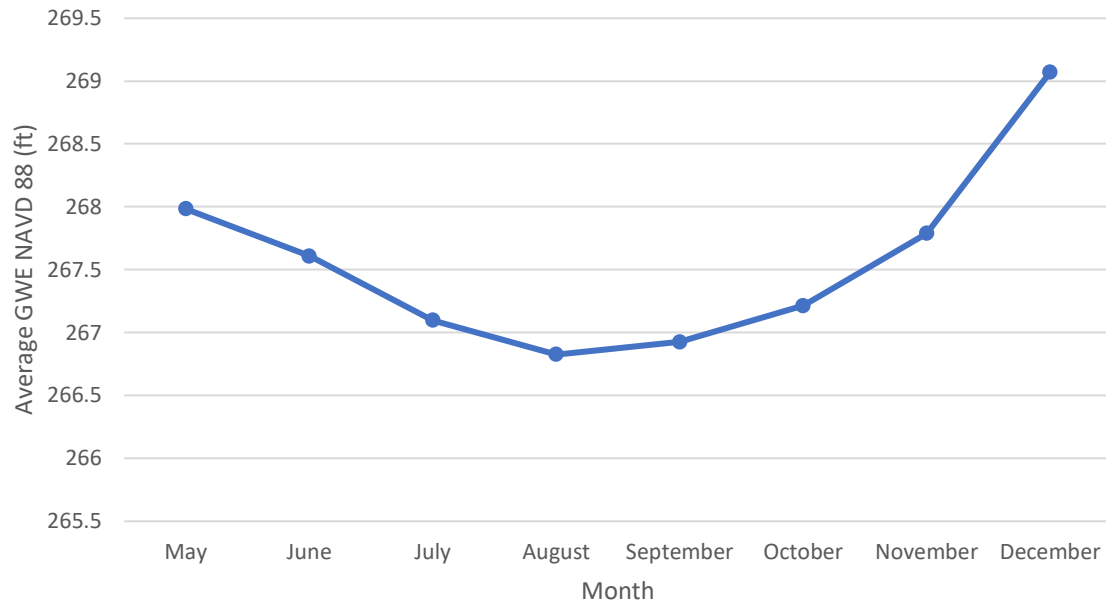
Installing the monitoring wells

Map of well locations



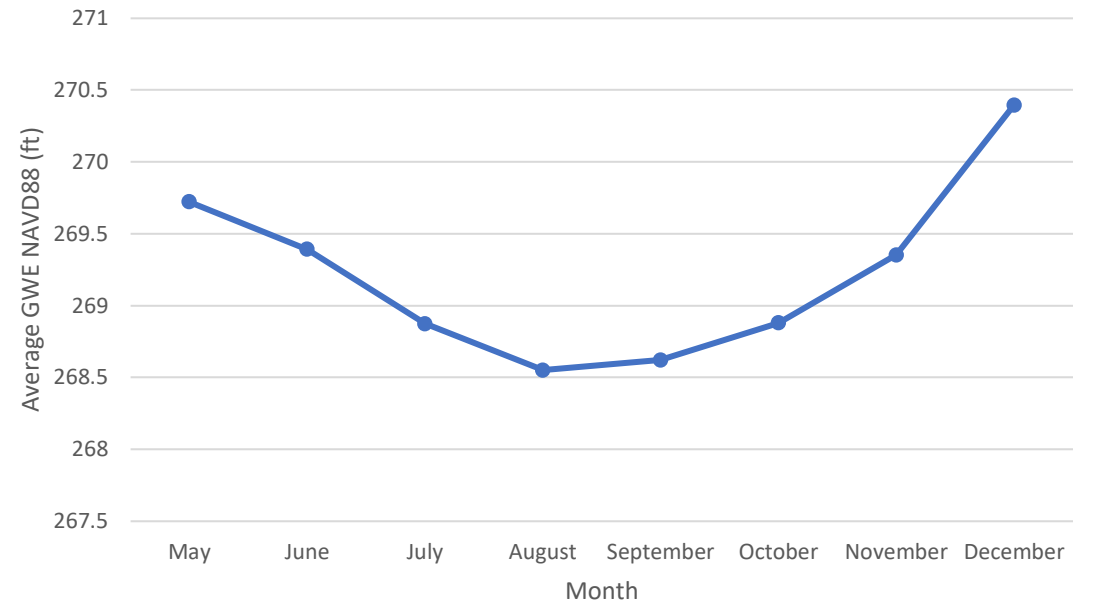
GWE_NAVD88 (ft)

WMW-01



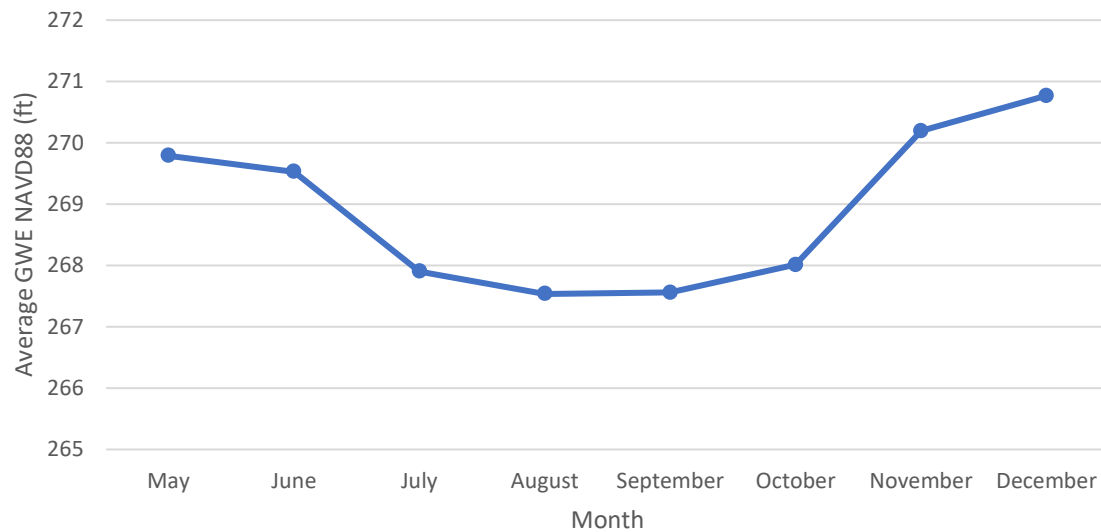
GWE_NAVD88 (ft)

WMW-02

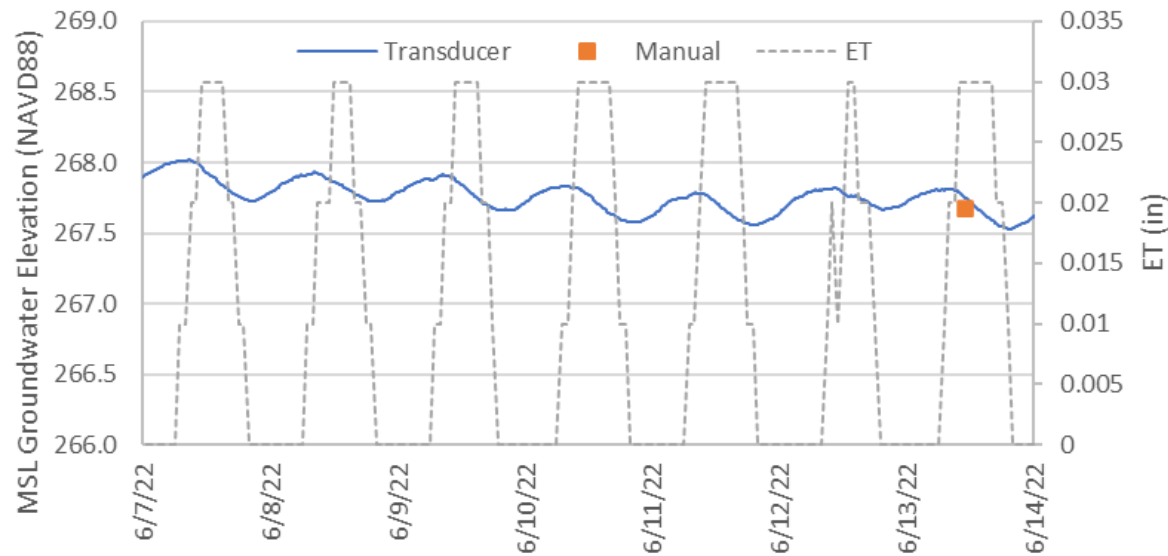


GWE_NAVD88 (ft)

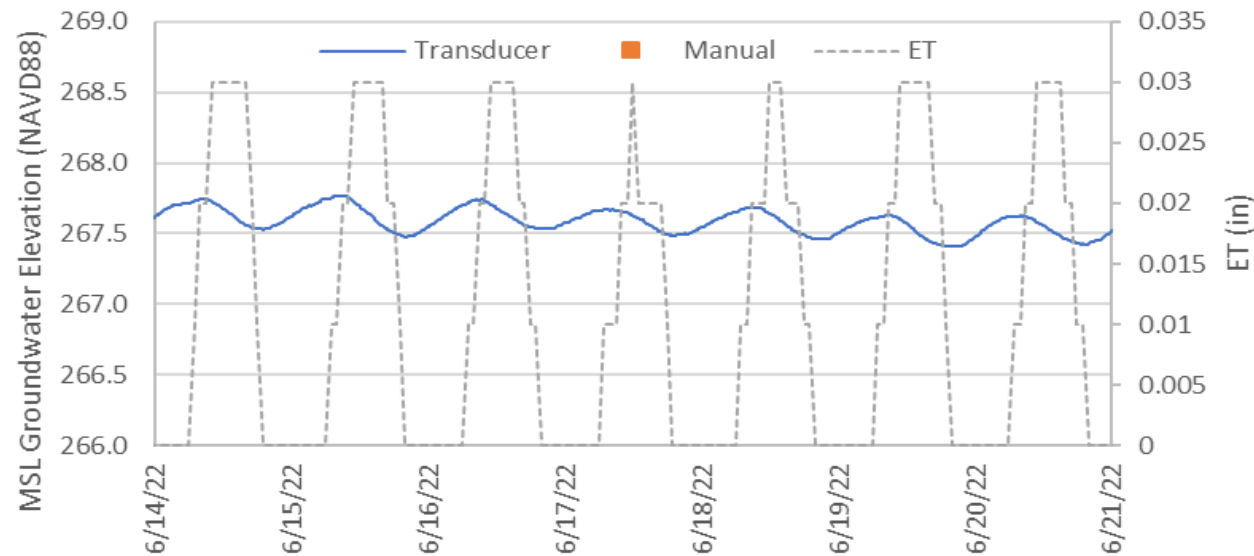
WMW-03



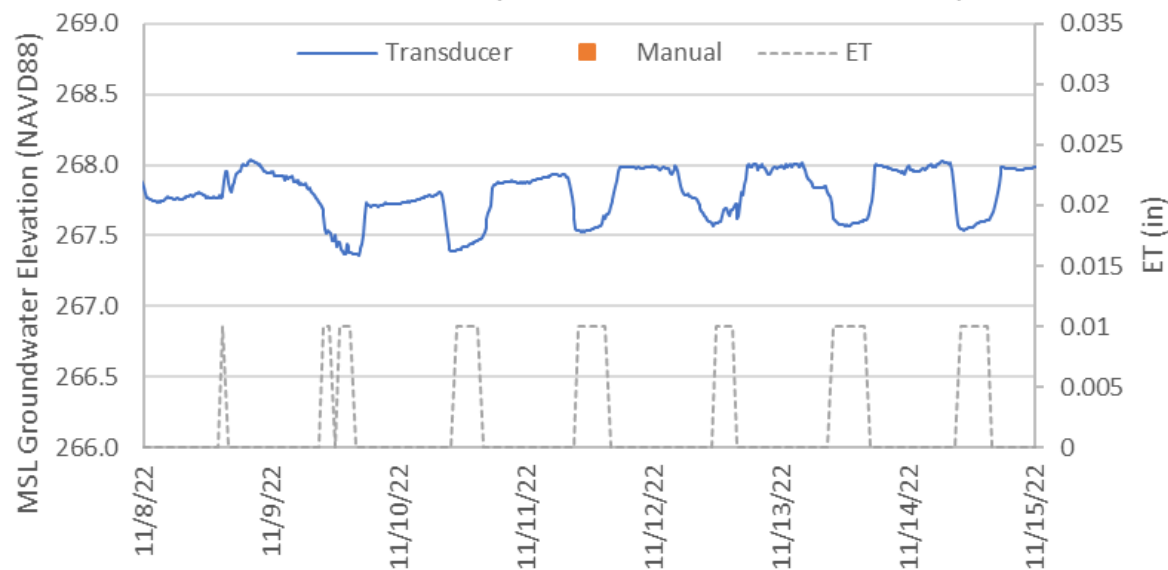
WMW-01 v ET (6/07/22 - 6/14/22)



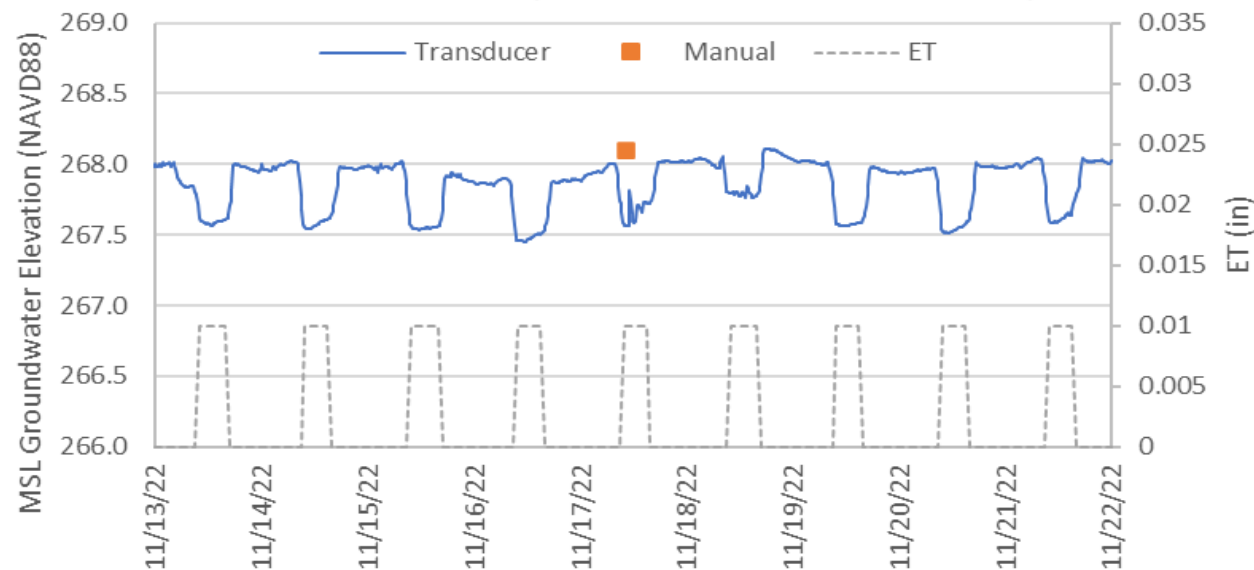
WMW-01 v ET (6/14/22 - 6/21/22)



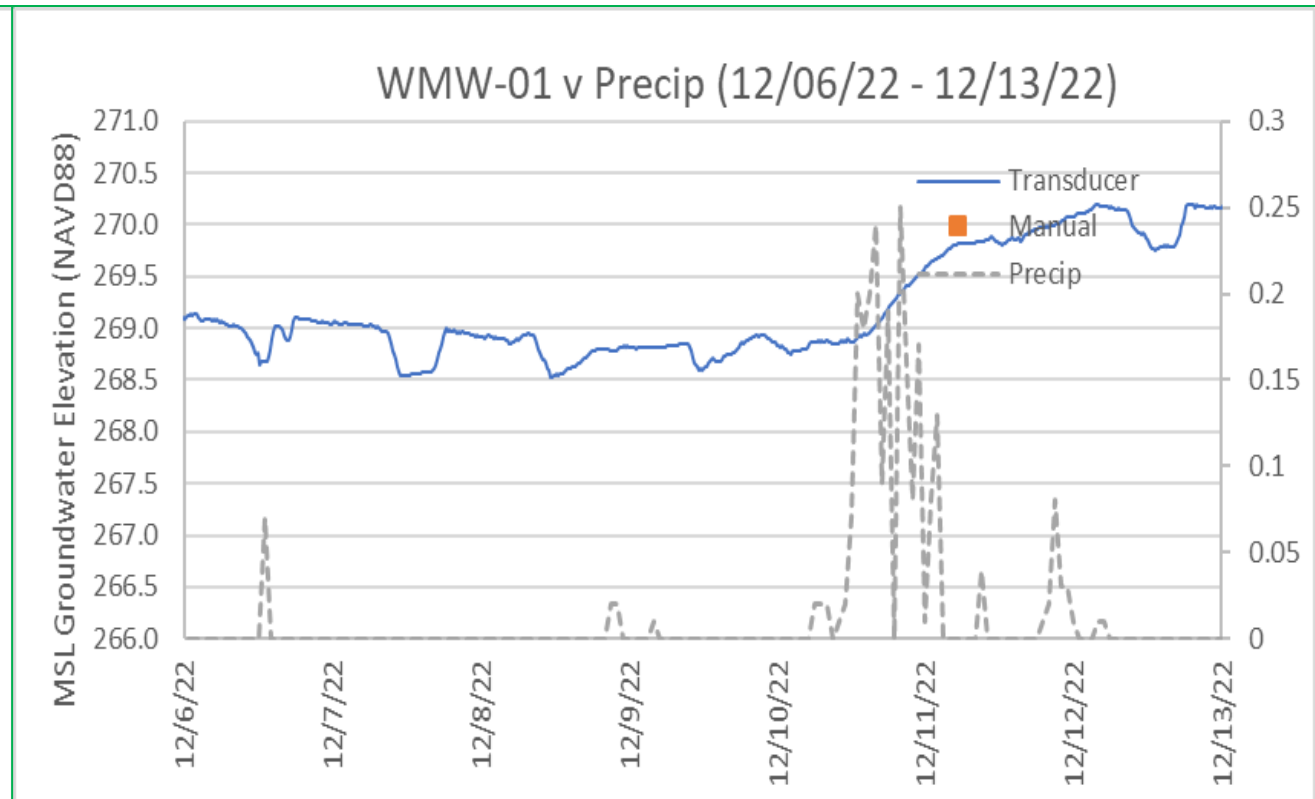
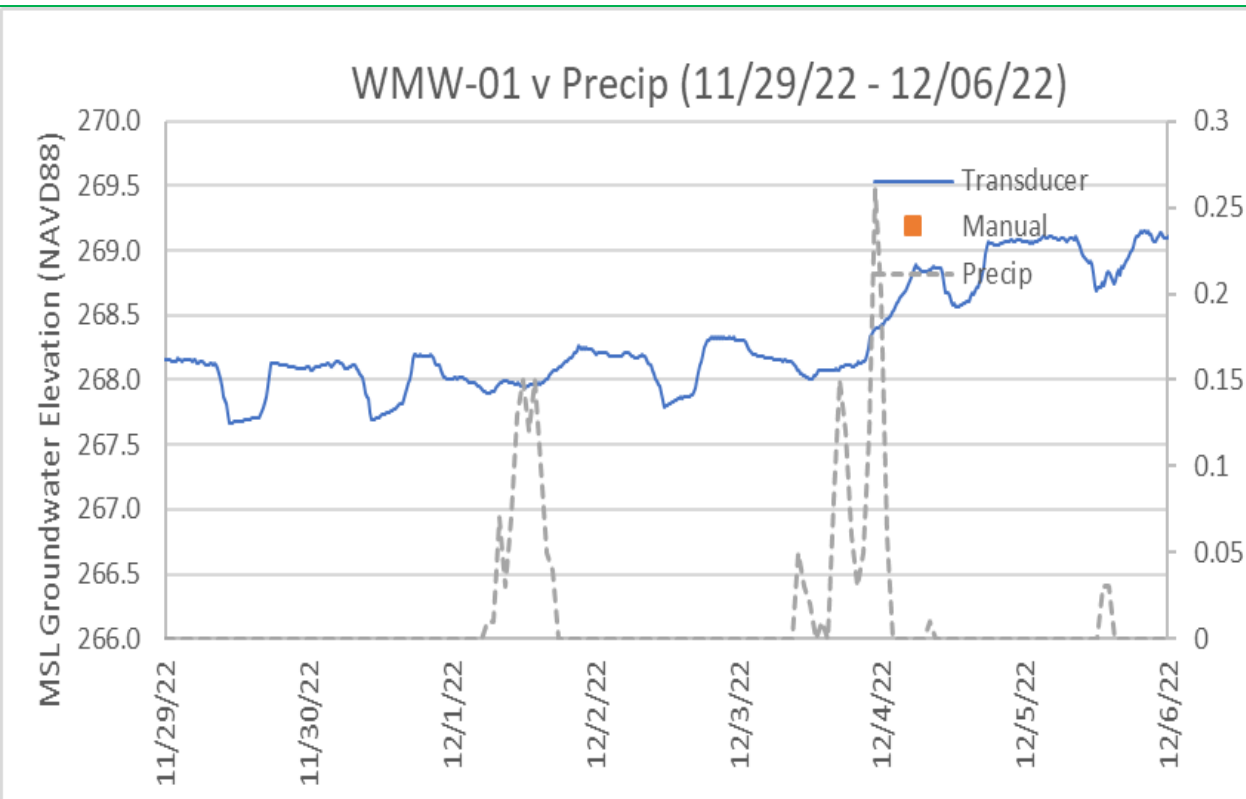
WMW-01 v ET (11/08/2022 - 11/15/2022)



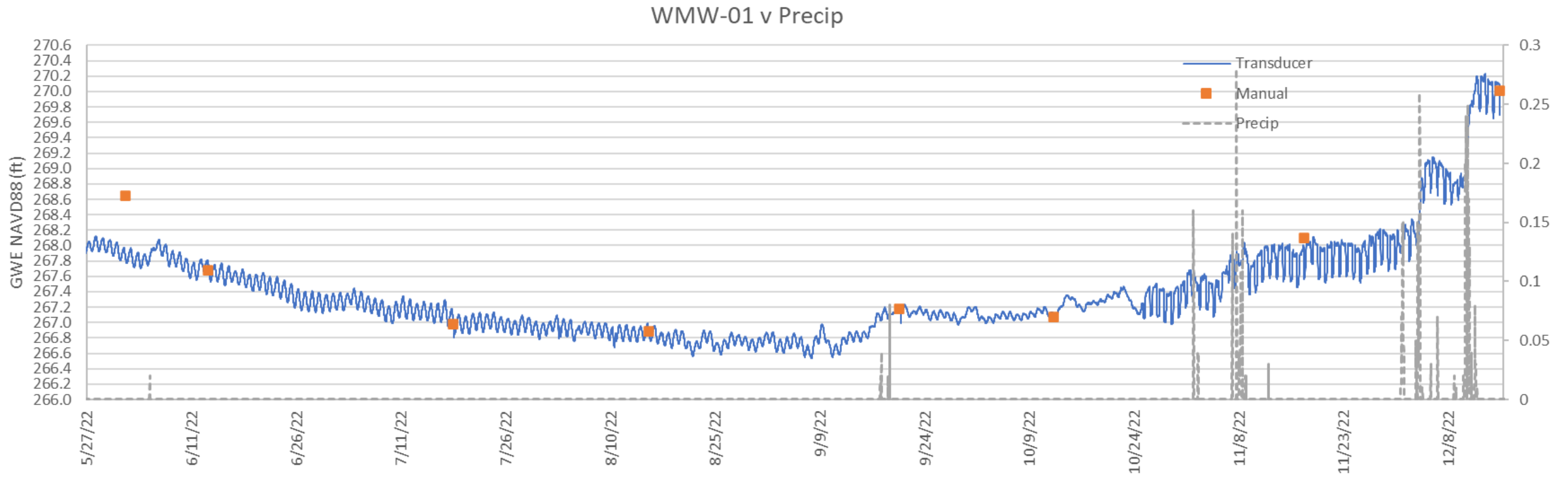
WMW-01 v ET (11/15/2022 - 11/22/2022)



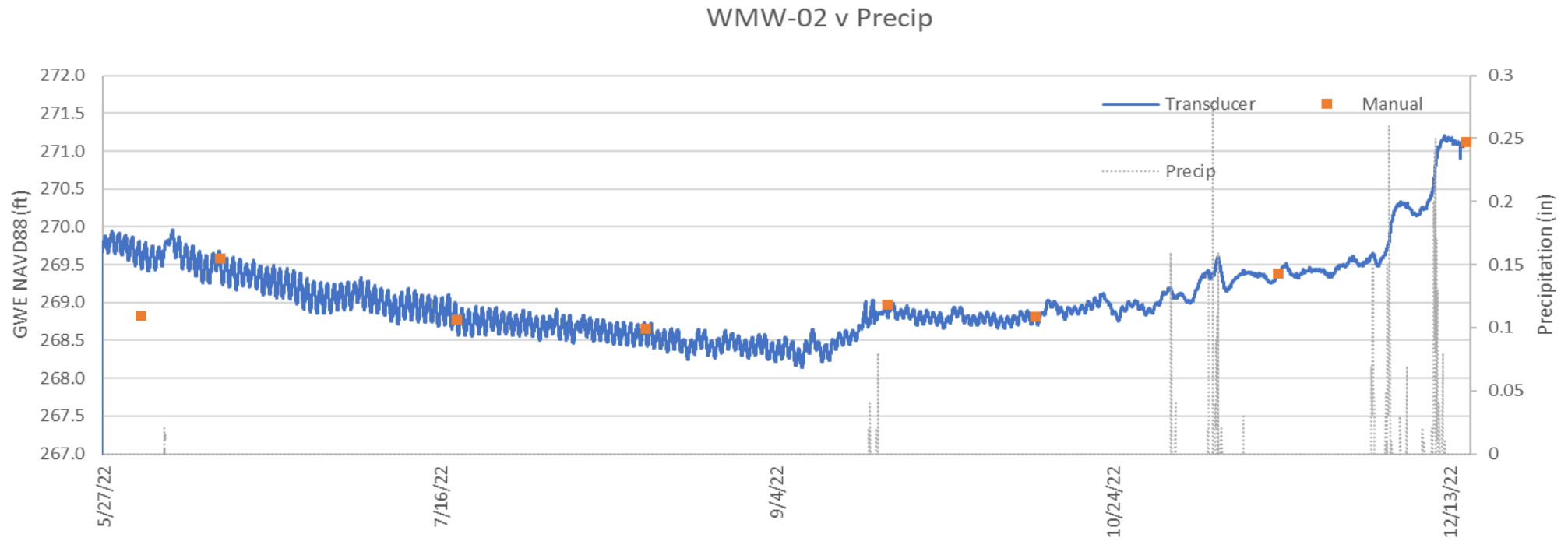
Precipitation and groundwater level



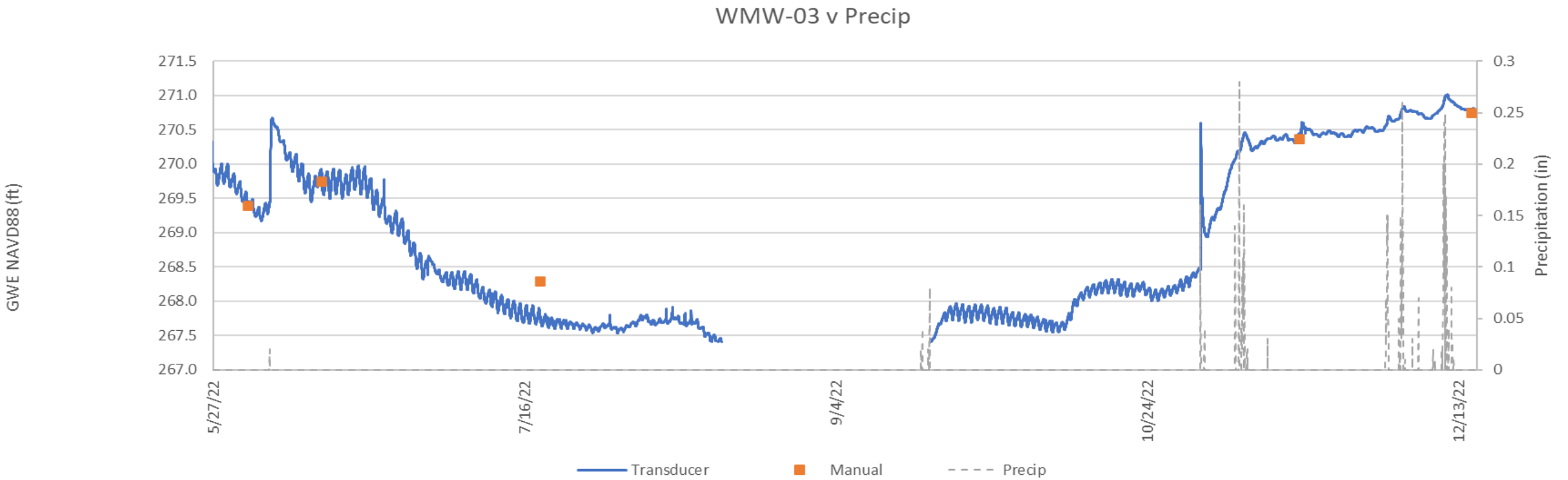
Precipitation and groundwater level



Precipitation and groundwater level



Precipitation and groundwater level



Next steps

- Continue some baseline data collection
- Apply for next round of WPDG funding





Thank you!

Questions

emily@bvtribe.com

hannah@bvtribe.com