

Communicating Tribal Wetland Importance Using ESRI Story Maps

A Tool for Data Access and Outreach



Stockbridge-Munsee Community

- “People of the Waters that are Never Still”
- a Band of Mohican Indians pushed from eastern seaboard halfway across the continent, moving several times and ultimately landing in NE Wisconsin.
- Community:
 - 1,200 members
 - led by a tribal council
- Water Resources Program
 - Water Quality (106 & 319)
 - Wetlands Program Plan








Stockbridge-Munsee Community



- Tribal ties to water:
 - Traditional village locations
 - Subsistence activities – hunting and fishing
 - Recreation – canoeing, bathing swimming
 - Oral traditions and creation story centered around water
 - Water management part of tribal history
- Current Reservation Land
 - 23,471 acres
 - Wetlands 6500 acres or 28% of land base
 - Primarily forested lowland hardwoods, conifer swamps
 - WI has lost 80% of forested wetlands



Stockbridge-Munsee Wetland Project Boundaries

-  Rivers & Streams
-  Lakes
-  Stockbridge Area
-  Counties
-  Study Area

Stockbridge-Munsee Community



- Water Resources Program:
 - Recognize water quality issues
 - Focus on reservation and surrounding watersheds
 - 2007 EPA grant through CWA Section 106 and 319 to develop Non-Point Source and Water Quality programs
 - Identified the need for wetlands program
 - 2011 Wetland Program Development Grant

“Reverse the historical loss of timber and wetland resources not only to gain the services and benefits those resources provide, but re-establish the ecological character and landscape of our tribal land.”

Stockbridge-Munsee Community



Wetland Program

- Focused on protection and restoration
- Includes active management on tribal lands and surrounding watersheds – over 200,000 acres

Goals:

- To preserve the extent and functions of intact wetlands.
- To enhance tribal-owned wetlands that are being degraded from historical and ongoing land uses.
- To restore tribal-owned wetlands that will improve water quality, fish and wildlife habitat on tribal lands.
- To restore non tribal-owned wetlands that will improve water quality and wildlife habitat for community members.

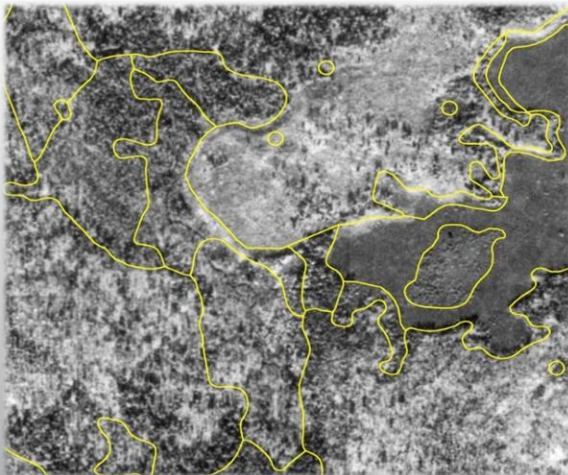
Project Background

2012 - Wetland Inventory & Functional Assessment Project Completed w/EPA WPD Grant

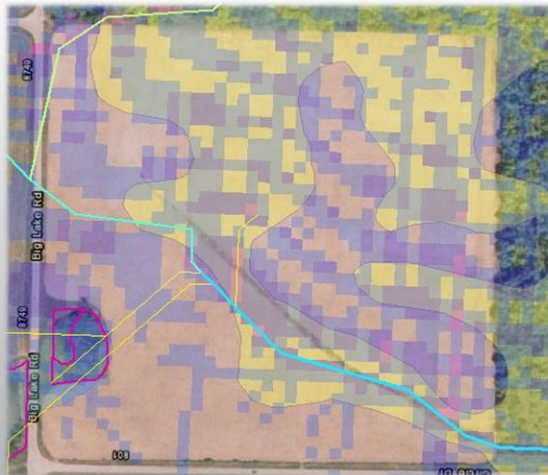
1) Current Wetlands



2) Historic Wetlands



3) Potential Restoration Site Identification



4) Wetland Restoration



Water Resources Program Recent Work

- Reviewed Potential Restoration Sites
- Restoration Sites Monitored, Restorations Planned & Completed, & More Being Planned
- Continued Water Quality Monitoring at Several Locations
- Developing Land Owner Outreach Strategy for Rest. Sites



Communication/Outreach

- Initial Efforts Not Terribly Effective (*Council Meetings, Newsletters, etc.*)
- Found Social Media Platforms were Heavily Used to Discuss (Unofficially) Tribal Business
- Story Map/Website – a Rich Communication Platform, Adaptable, Geographic-based Used to Target Those Not Attending Council Meeting
- EPA Wetland Program Development Grant Funding
- Collaborate w/ SMUMN
- Project Scoping Completed
- In Design Phase

Project Goals

Create Website with embedded ESRI Story Maps to:

- Share SMC Water Resources Program accomplishments with tribal council and the public
- Provide public access to and interactive use of local wetlands GIS data
- Provide public access to summary water quality data
- Educate and Engage tribal members and the greater community on the importance of wetlands

Five Major Sections

1. Home (built in SQUARESPACE™)



2. Who We Are? (Tribal History – Timeline Story Map)



3. Water Resources

- Description of Program
- Water Resource Statistics
- Nonpoint Source
Pollution
Management
Plan

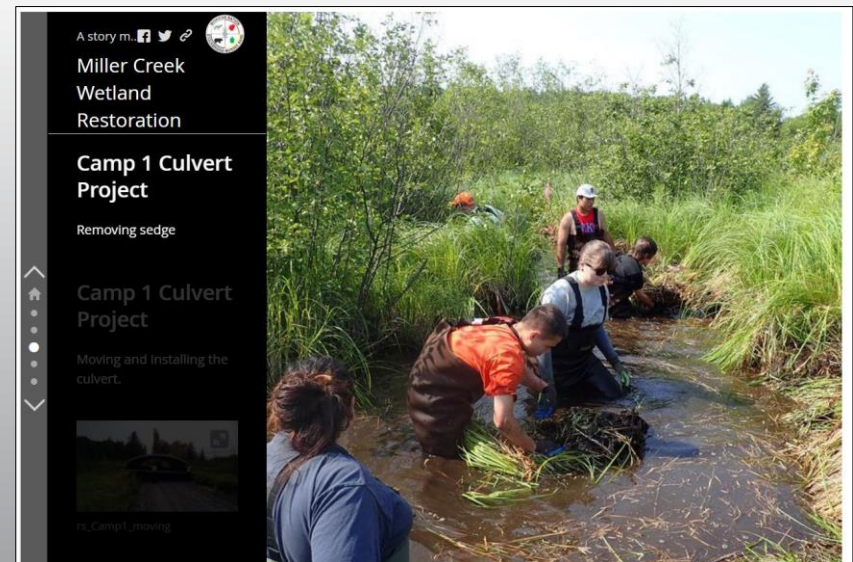
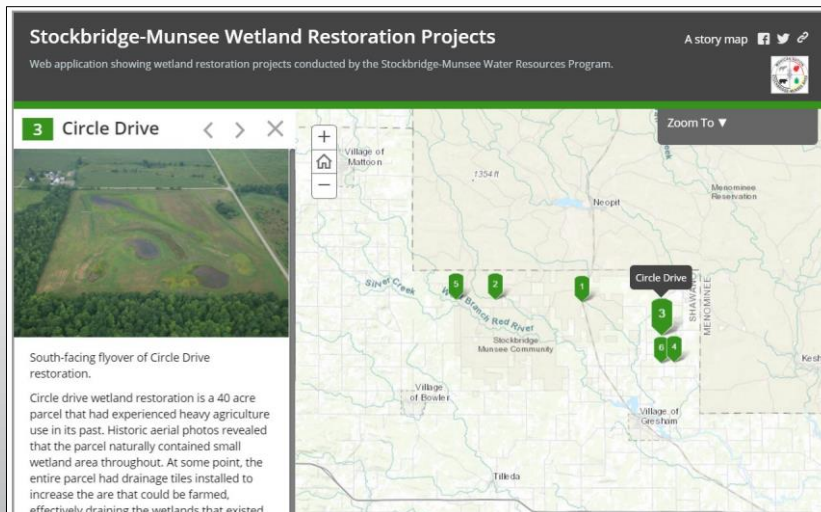
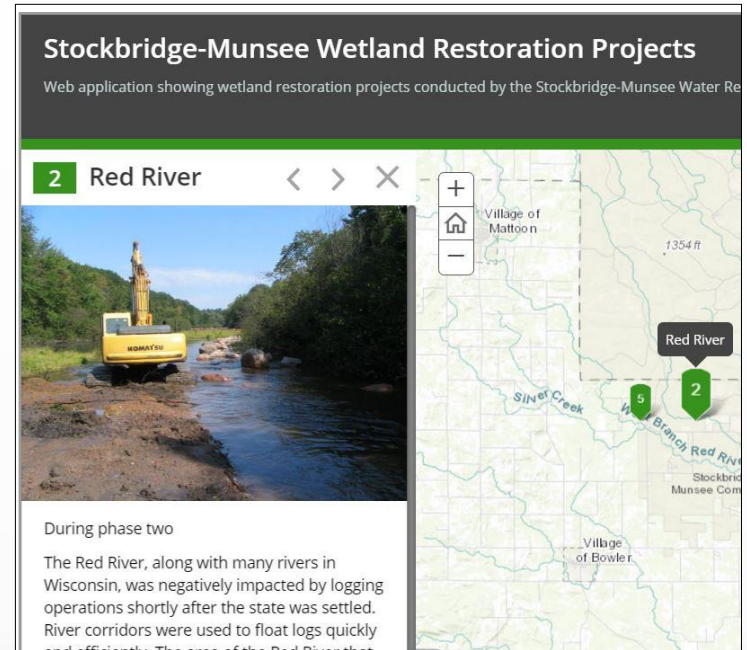


Tribal Water Resources...

The Tribe's land base has a diverse variety of water resources,

4. Success Stories (Story Maps)

- Wetland Restoration
- Miller Creek
- Restored Wetland Functions



5. How You Can Help

- Complete Our Survey
- Links To Partners
- Contact Us
(direct form to email)

Email *

Name *

First Name Last Name

Are you attending? *

Who else is coming with you? *

Song suggestions?

SUBMIT

Brief Website Demo

<https://roger-meyer-kgdh.squarespace.com/>



Learning Along the Way

- Organization & Wire Framing to Start
- Content is Critical!!!
- Design for Multiple Platforms
 - Consistently Check Phone After Desktop Changes

Next Steps

- Continue making edits
- Continue to get feedback
 - How to solicit it?
- Explore Testing
- Launch it
- Maintain/Transfer

Contacts:

Andy Robertson

Executive Director, GeoSpatial Services
Saint Mary's University of Minnesota

aroberts@smumn.edu

507-457-8750

Angela Waupochnik

Hydrologist
Stockbridge-Munsee Community

angelawaupochnik@Mohican-nsn.gov

715-739-4818



Saint Mary's
University
OF MINNESOTA

GEOSPATIAL SERVICES