

2025 Delaware State Update

Division of Watershed Stewardship

Wetland Monitoring and
Assessment Program



Alison Rogerson – Environmental Scientist



DELAWARE DEPARTMENT OF
NATURAL RESOURCES AND
ENVIRONMENTAL CONTROL

Marsh Migration Model



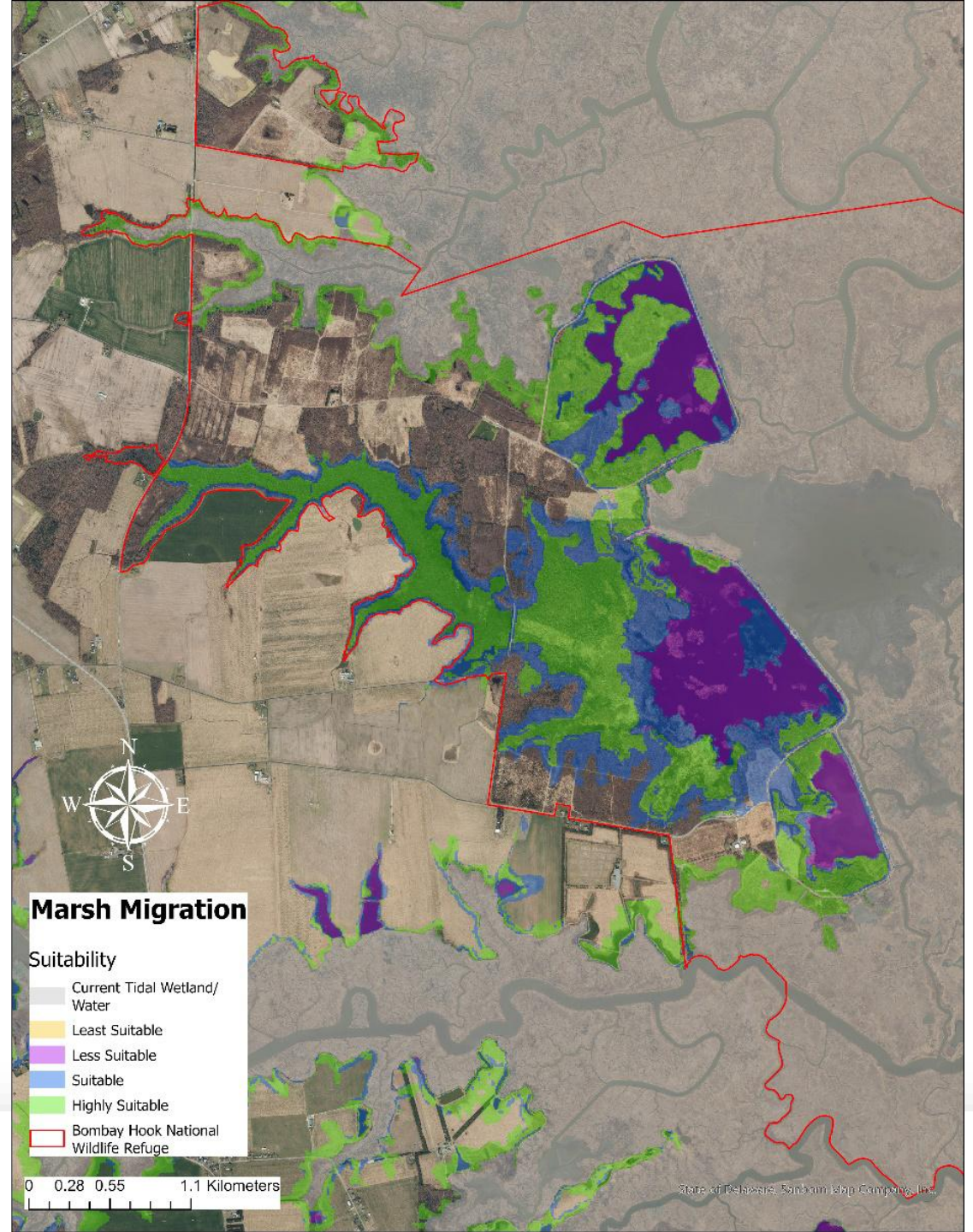
Delaware Marsh Migration Suitability Analysis

A GUIDANCE TOOL FOR PROFESSIONALS AND LANDOWNERS ALIKE

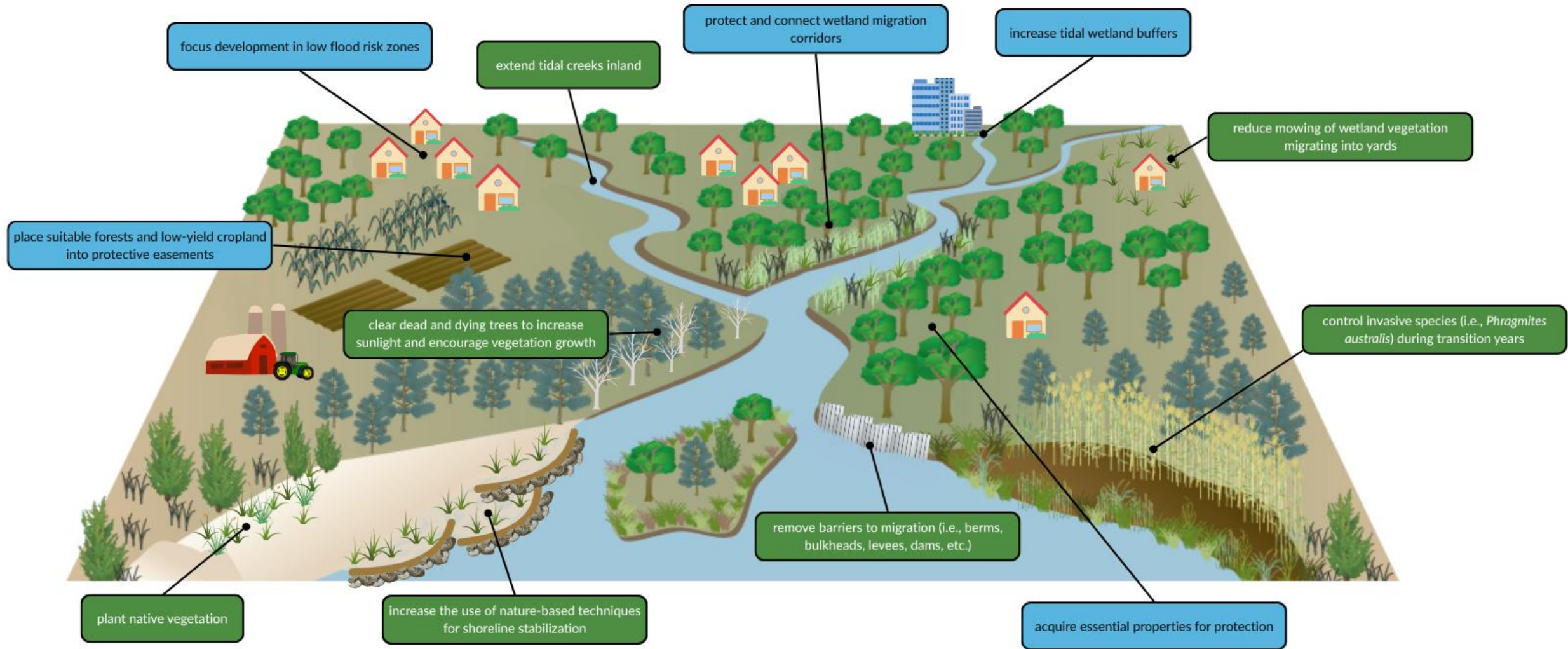
June 2025



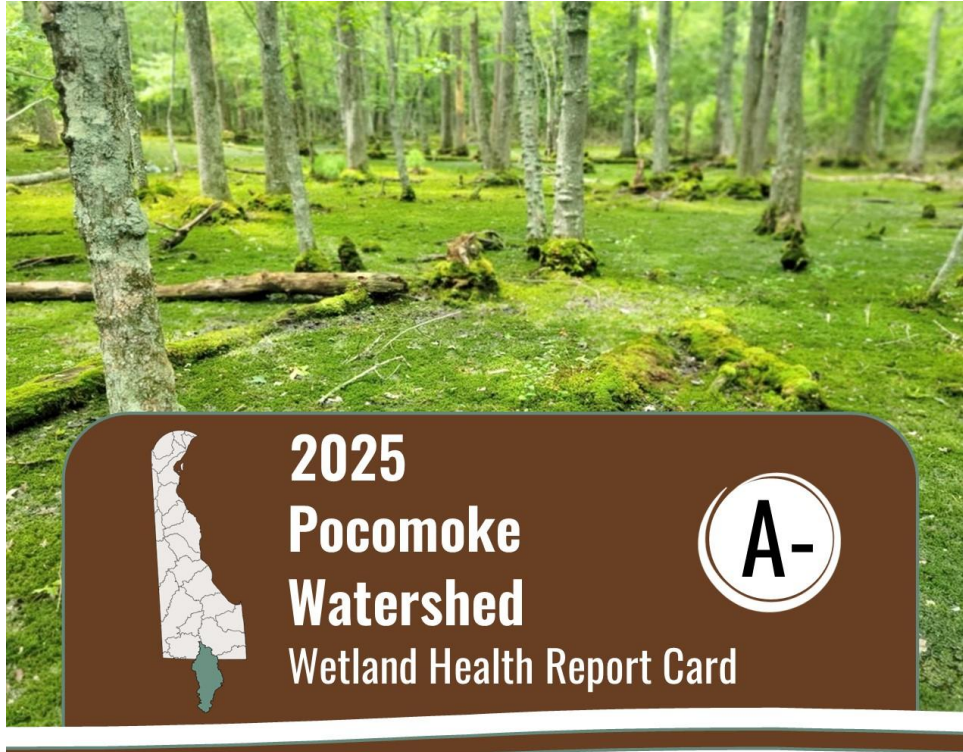
DELAWARE DEPARTMENT OF
NATURAL RESOURCES AND
ENVIRONMENTAL CONTROL



Marsh Migration Model



Pocomoke Watershed Wetland Condition Report



About the Watershed

The Pocomoke watershed is located in Sussex County, Delaware and extends further south into Maryland where it encompasses 138,125 acres (216 square miles) of land total in both states. Tucked in between the Nanticoke watershed to the west and the Inland Bays watershed to the east, 16% of the Pocomoke falls within Delaware, with the remaining 84% of the watershed continuing south into Maryland. It is composed of 5 sub-watersheds, and much of the Pocomoke is a mix between agricultural land and forested areas.

Based on 2017 and 2018 wetland maps, the Pocomoke watershed 50,650 acres of wetlands. However, this represents less than half of the historic wetland acreage, which has been destroyed mostly as a result of conversion to agricultural land. The watershed also contained some Category One wetlands, which are rare, unique freshwater wetland types in Delaware. Wetland acreage and health is directly related to the potential natural services the people of Delaware can benefit from.

Overall, the Pocomoke watershed's wetlands received a **A-** for their health score. Common wetland stressors were tree harvesting, invasive plants, channelized streams or ditching, and mowing.



Grade by Wetland Type



Habitat



Hydrology



Buffer

Wetland Health Scale:



Excellent



Good



Fair



Poor

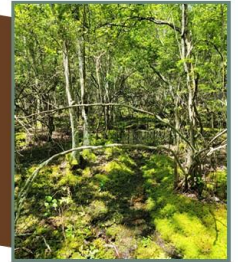
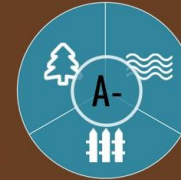


Very Poor

Riverine Wetlands

Riverine wetlands occur along streams or rivers and provide storage for floodwaters and groundwater. The water that moves into these wetlands is cleaned before it moves downstream. They also form corridors of valuable wildlife habitat.

Common Problems: Invasive species, mowing, and channelized streams or ditches



Flat Wetlands

Flat wetlands are typically located at the upper reaches of the watershed and are usually forested. They are seasonally wet and often appear dry on the surface. They absorb precipitation and filter water slowly into streams and groundwaters.

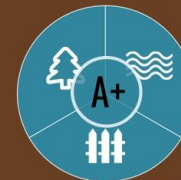
Common Problems: Forest harvesting, microtopographic alterations, groundwater and mowing in surrounding landscape



Depression Wetlands

Depressions are isolated shallow pools of water that occur in low lying areas. They are seasonally wet and provide critical habitat for amphibians like frogs and salamanders.

Common Problems: Forest harvesting, ditching, and mowing



Hidden Gems of the Depression Wetlands

This watershed contained 3 unique freshwater wetland communities: Coastal Plain ponds, bald cypress swamps, and Atlantic white cedar swamps.

Did You Know?

You can find out more information about Delaware's wetlands by visiting: de.gov/delawarewetlands

Millsboro Beneficial Use Restoration



- Season 1: July 2024-Feb. 28
- Season 2: August 2025 to current
- Logged >210 dredging hours
- Visible sediment build up
- Shoreline 'smoothing'
- Interior logs buried
- Aerial seeding plans underway



Water Family Fest & Native Plant Sale 2025



A Day in Nature: Connect, Learn, Protect—Together.

Saturday May 3 | **10 am to 2 pm** | **James Farm Ecological Preserve**
Ocean View, DE

FREE Family-Friendly Event

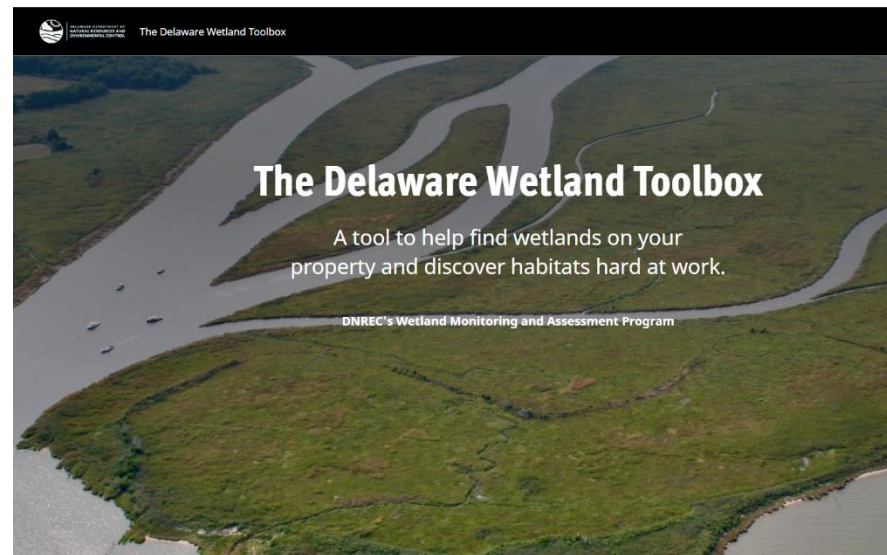
Recreational and Educational Opportunities • Kids Activities
Environmental Education Booths • Food Trucks • Live Music



DELAWARE DEPARTMENT OF
NATURAL RESOURCES AND
ENVIRONMENTAL CONTROL



DELAWARE
CENTER FOR THE
INLAND BAYS
preserve • protect • restore



The Delaware Wetland Toolbox

A tool to help find wetlands on your property and discover habitats hard at work.

DNREC's Wetland Monitoring and Assessment Program

Delaware Living Shorelines in the NYT August 2025

50 STATES, 50 FIXES

Do Coconuts Go With Oysters? For Saving the Delaware Shore, Yes.

Along with other East Coast states, Delaware is using natural materials to protect vulnerable coastal areas.



Freshwater Wetland Protection Program update

- Bill under revision
- Not put to vote in 2024 session
- Regular stakeholder meetings
- Unique & Exceptional Value Wetland Subcommittee





Chase Center
at the
Riverfront
Wilmington, DE



Scan for more details!

**SAVE
THE
DATE**

January 27 and 28, 2026

accepting abstracts

sponsorship and
non-profit exhibitor
options available

registration opens
October 2025

Silent Auction → scholarships



New wetland restoration field trip



Updating Wetland Program Plan



2026 – 2030 Delaware Wetland Program Plan

A guidance and resource for
building a state of Delaware
comprehensive wetland program.



DELAWARE DEPARTMENT OF
NATURAL RESOURCES AND
ENVIRONMENTAL CONTROL



DELAWARE DEPARTMENT OF
NATURAL RESOURCES AND
ENVIRONMENTAL CONTROL

NWCA 2026

10 Sites

4 Tidal

6 Nontidal



BU Site Screening Project Pilot

With an NEP

Landscape screening

Field metrics

Regulatory
considerations



Thank You!

alison.rogerson@delaware.gov

Follow us!



@DNRECwetlands



DELAWARE DEPARTMENT OF
NATURAL RESOURCES AND
ENVIRONMENTAL CONTROL