

NYS wetland conservation & research update

2024 MAWWG-NEBAWWG

Laura J. Shappell, Ph.D.
New York Natural Heritage Program

Laura.Shappell@dec.ny.gov
nynhp.org/shappell



NYNHP



All figures and photographs by L. Shappell
or NYNHP staff unless noted.

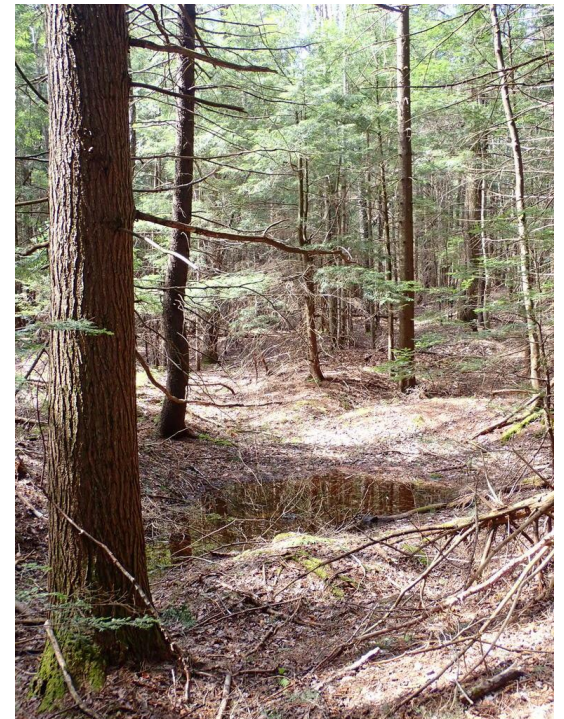


Updating NYS wetland protection rules!

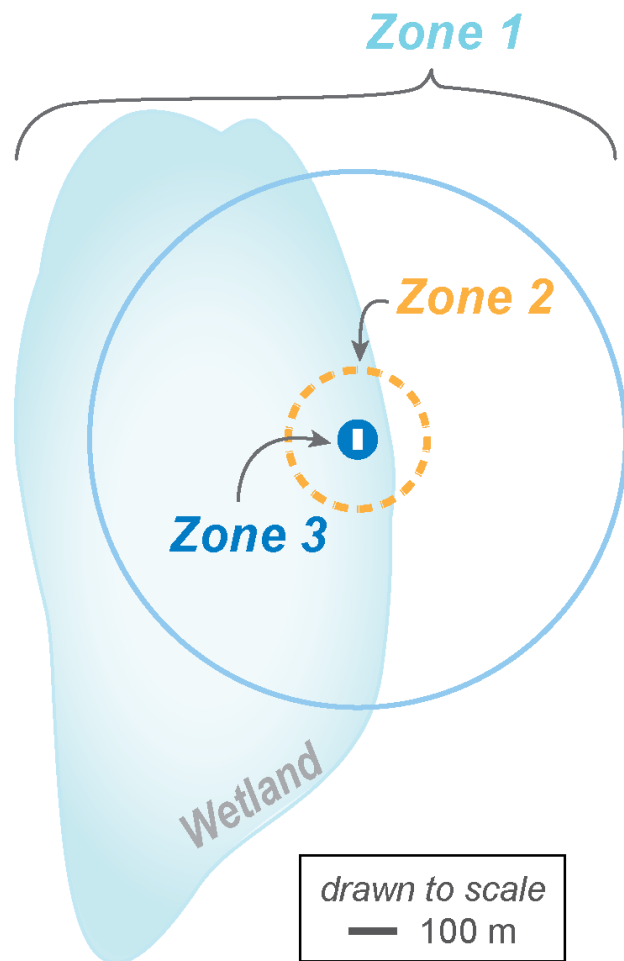


Determining Thresholds for Conservation of Vernal Pools

Matthew D. Schlesinger, Laura J. Shappell
Leah D. Nagel, Stacy A. McNulty & James P. Gibbs
Wetlands, Volume 44, article number 82, (2024)



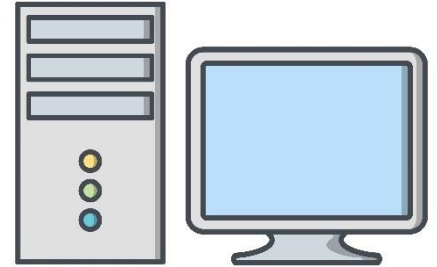
Refine/update three-tier assessment



Zone 1, Landscape and Contiguous wetland

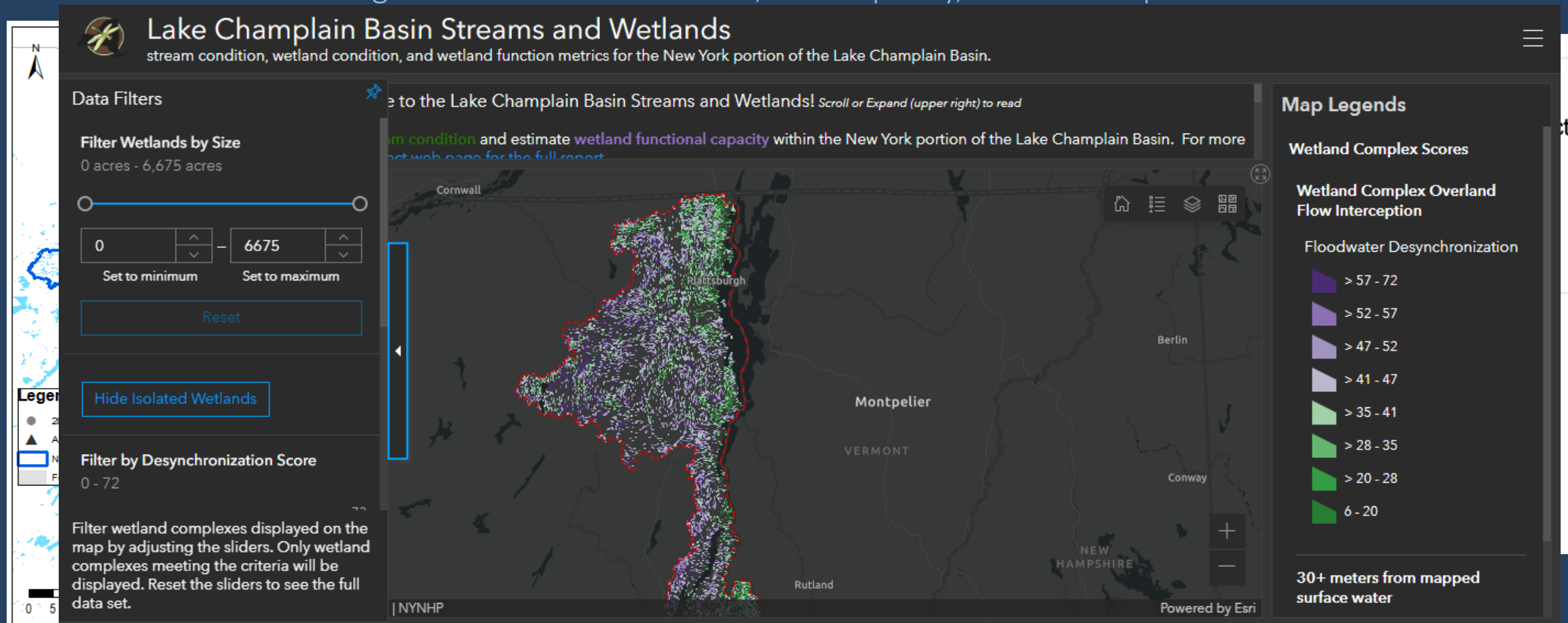
Zone 2, NYRAM & WetFAM Field Buffer (FB)

Zone 3, Focused Survey Area (SA)



LCB wetland field surveys

“Using multi-metric modeling, field surveys, and online spatial tools to support conservation and management for flood resilience, water quality, and native species habitat”



Floodplain condition and function Developing a WPP for NYS



Greenhouse gas flux & C sequestration

natural vegetated wetlands and ponds



CORNELL
UNIVERSITY

Acknowledgements



New York
Natural Heritage
Program



Lydia Sweeney, Tim Howard

Greg Edinger and NYNHP staffers/techs

Public and private land owners

NYS DEC Partners, JR Jacobson, Jr., Matt Walter;
NYC DEP Partners, Laurie Machung, Frank Parisio;
EPA Region 2 WPDG staff

Laura J. Shappell, Ph.D.

Wetland Ecologist, NYNHP

Laura.Shappell@dec.ny.gov

nynhp.org/shappell

(518) 402-8931

Research Funding

US EPA WPDG, NYS DEC, NEIWPC
P. Leahy Lake Champlain Basin Program

