



# Updates from the National Association of Wetland Managers

---

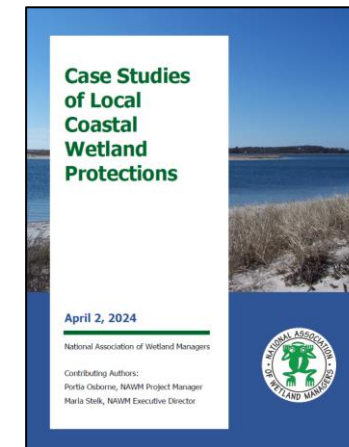
PORTIA OSBORNE, ASSISTANT DIRECTOR

MAWWG-NEBAWWG JOINT MEETING

NOVEMBER 12-14, 2024

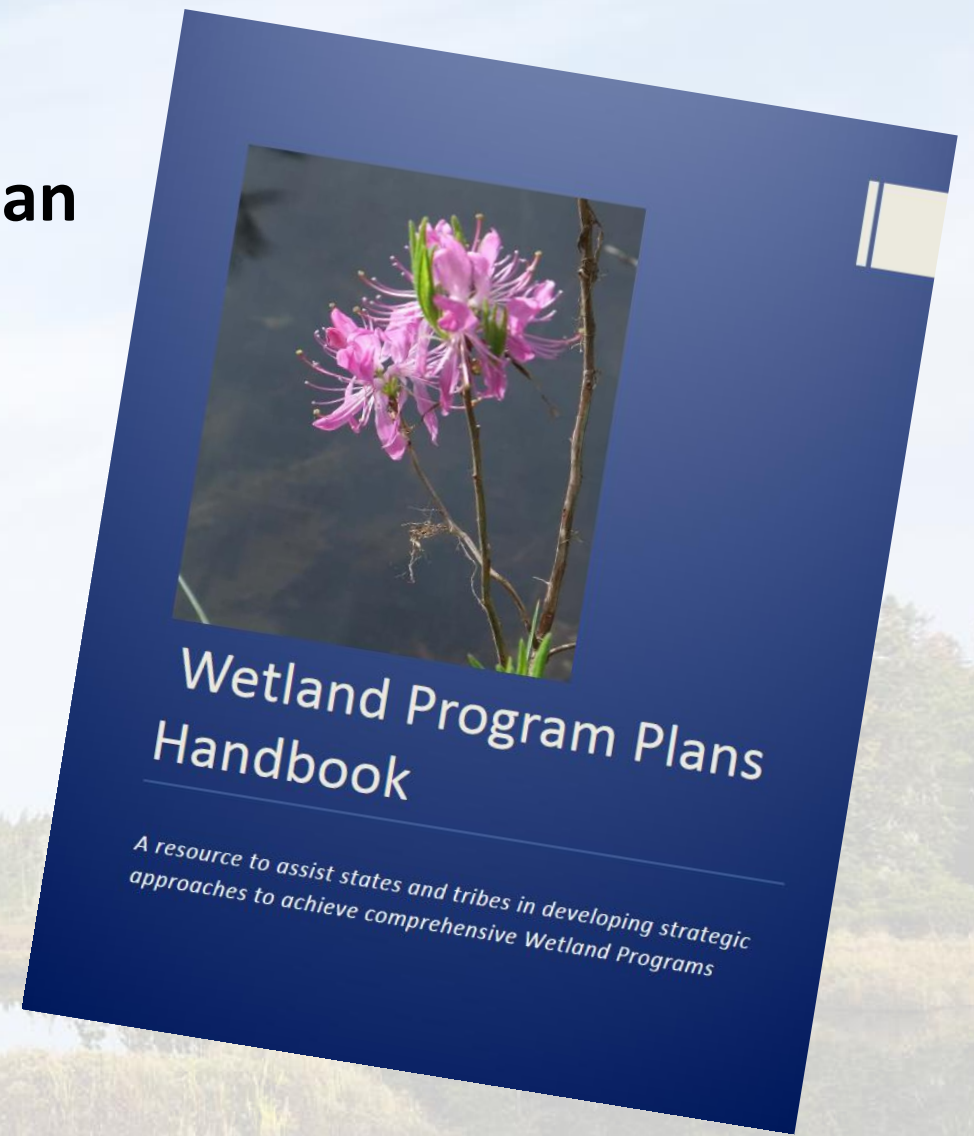
# Current/Recent NAWM Project Areas

- Building State and Tribal Wetland Program Capacity
- Working with Tribes to Build Wetland/Water Quality Programs
- Supporting Local Protection of Coastal Wetlands
- Habitat Management through Beaver-Related Restoration
- Advancing the Integration of Clean Water Act Programs with Natural Hazard Mitigation Planning and Implementation



# Updating the 2013 Wetland Program Plan Handbook

We are looking for examples of state wetland programs taking innovative approaches and tackling challenges to highlight in the updated handbook





**Status and Trends Report on  
State Wetland Programs in the United States**

Association of State Wetland Managers  
2015

**For each of the 50 states, NAWM documented the status of the state's:**

- Wetland Regulations and Programs;
- Wetland Monitoring and assessment;
- Voluntary Wetland Restoration Programs and Activities;
- Wetland Water Quality Standards;
- Adaptation and/or Climate Change Activities Involving Wetlands;
- Areas of Integration with Other State Programs; and
- Unique Education and Outreach Models.

# Updating each of the State Wetland Program Summaries to reflect changes in the past 10 years

Adding new information on:

- Use of wetland functional assessments
- Approaches to wetland-stream integration
- Environmental justice considerations
- And more!

## West Virginia State Wetland Program Summary



Photo Credit: West Virginia DEP

[Click Here to Skip to West Virginia's Information about Wetland:](#)  
[Regulation](#)  
[Monitoring & Assessment](#)  
[Water Quality Standards](#)  
[Voluntary Restoration](#)  
[Education and Outreach](#)  
[Integration with Other Programs](#)

### Section A. Quick View

#### **Description of State's Wetlands**

West Virginia's vegetated wetlands can be separated into three major types based on their dominant vegetation: (1) emergent wetlands (commonly called marshes and wet meadows) characterized by grasses, sedges, and other non-woody plants, (2) shrub wetlands (including shrub swamps and bogs) represented by low-to-medium height (less than 20 feet tall) woody plants, and (3) forested wetlands (mostly wooded swamps and bottomland forests) dominated by trees (woody plants 20 feet or taller).

#### **State Definition of Wetlands**

The state uses the federal definition of wetlands. Wetlands are defined as "those areas that are inundated or saturated by surface or groundwater at a frequency and duration sufficient to support, and that under normal circumstances do support, a prevalence of vegetation typically adapted for life in saturated soil conditions. Wetlands generally include swamps, marshes, bogs, and similar areas."

#### **Historic Wetland Loss/Gain**

Original Wetland Acreage	Remaining Wetland Acreage	Acreage Lost	% Lost
134,000	102,000	32,000	24%



# Wetlands: Changing the Narrative

A multi-year, multimedia campaign to share stories about the essential role private landowners play in preserving our nation's wetland heritage.



<https://nawm.org/nawm-campaigns/changing-the-narrative-campaign.html>







# MARSH

MENTORSHIP ASSISTED RESOURCE & SUPPORT HUB

**A Joint Initiative Offered By**





# Join Us – Registration Now Open!

## National Association of Wetland Managers Annual State/Tribal/Federal Coordination Meeting



*Building an Evergreen Future with Wetlands*

**April 8-11, 2025**

**Skamania Lodge, Stevenson, WA**



# Thank you!

---

**National Association of Wetland Managers**

500 Washington Ave., Suite 201

Portland, ME 04103

207-892-3399

[www.nawm.org](http://www.nawm.org)

