

# State Updates: Maine Natural Areas Program

Presented by:  
Kristen Puryear, Chief Ecologist  
Maine Natural Areas Program  
Maine Department of Agriculture, Conservation and Forestry

Amanda E. Beal  
Commissioner

Judy East  
Director

18 Elkins Lane  
Augusta, ME 04333

(207) 287-3200  
[www.maine.gov/dacf](http://www.maine.gov/dacf)



# Maine Natural Areas Program

MNAP serves Maine's citizens as a comprehensive source for the State's important natural community and botanical features.

Endangered & Threatened  
Plants



Rare or Exemplary Natural  
Communities and  
Ecosystems



Conservation Planning &  
Environmental Review



Ecological Reserves,  
Sentinel Site Vegetation  
Monitoring



MNAP provides objective and comprehensive information to equip decision-makers. We share data with other state agencies, town planners, land trusts, and other groups interested in natural resource and conservation planning.

# WPDG: “Promoting Resilience, Hydrologic Function, Biodiversity Preservation, and Carbon Sequestration from the Mountains to the Sea.”

Project goals:

**Improve Maine’s classification and mapping of wetland systems** with a focus on

- 1) riparian systems** and riparian connectivity corridors that prioritize connecting wetland-rich and biologically-diverse areas, and
- 2) aquatic systems** that are vital to carbon capture and storage, **including peatlands, coastal wetlands, and forested riparian areas.**



Photo: Kristen Puryear



## Site Selection

### Landscape Analysis

- NWI
- Forest stand age data
- Climate resiliency data (TNC)
- Potential/proximity to rare botanical features

### Example sites

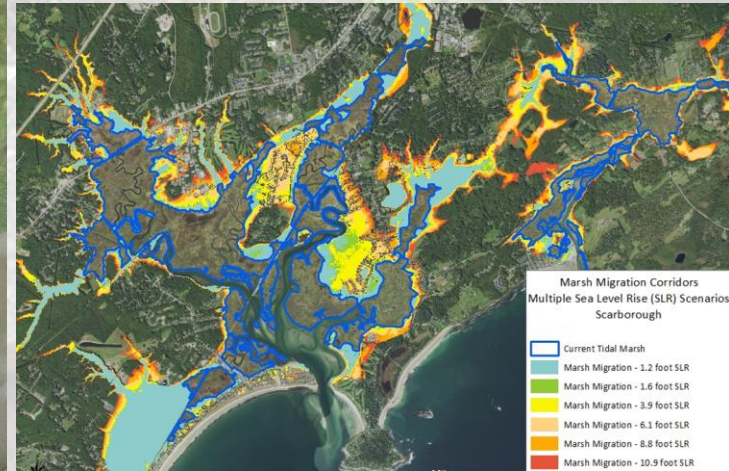
- Large contiguous forested swamps
- Older forest structure
- Coastal peatlands
- Unsurveyed tidal marshes





## Results: Tidal Marshes

- Collaboration with Marine Vegetation Mapping Program (Maine DEP)
- Completed 2.0 of Marsh Migration Modeling





## Results and Outcomes

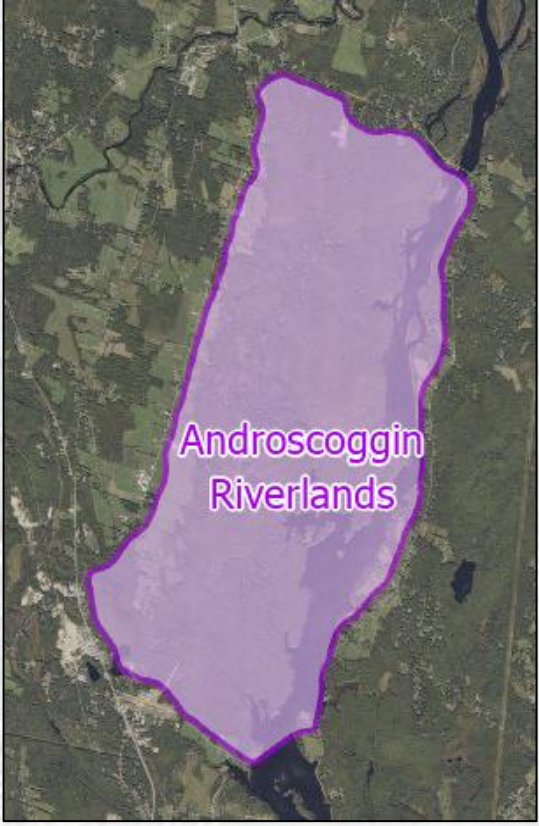
- 50 + sites
- Dozens of new natural community and rare plant records
- Updates to historic records (>20 years)
- Pre-acquisition assessment



# Scientific Assessment of Climate Change and Its Effects in Maine



MAINE CLIMATE COUNCIL  
SCIENTIFIC AND TECHNICAL SUBCOMMITTEE



## Freshwater

Maine's wetlands are a bright spot for biodiversity and carbon storage, with some of the highest quality and quantity of these types of ecosystems across New England, but remain at risk from poorly planned development and climate impacts. Maine has lost up to 20% of its wetlands since the 1780s, but has some of the most intact

## Results and Outcomes

- Updates to State Rare Plant List
- Wetland updates for Scientific and Technical Subcommittee report
- Inform Focus Area updates
- Development and conservation planning



Thank you!

[Kristen.Puryear@maine.gov](mailto:Kristen.Puryear@maine.gov)

Photo courtesy of MCHT