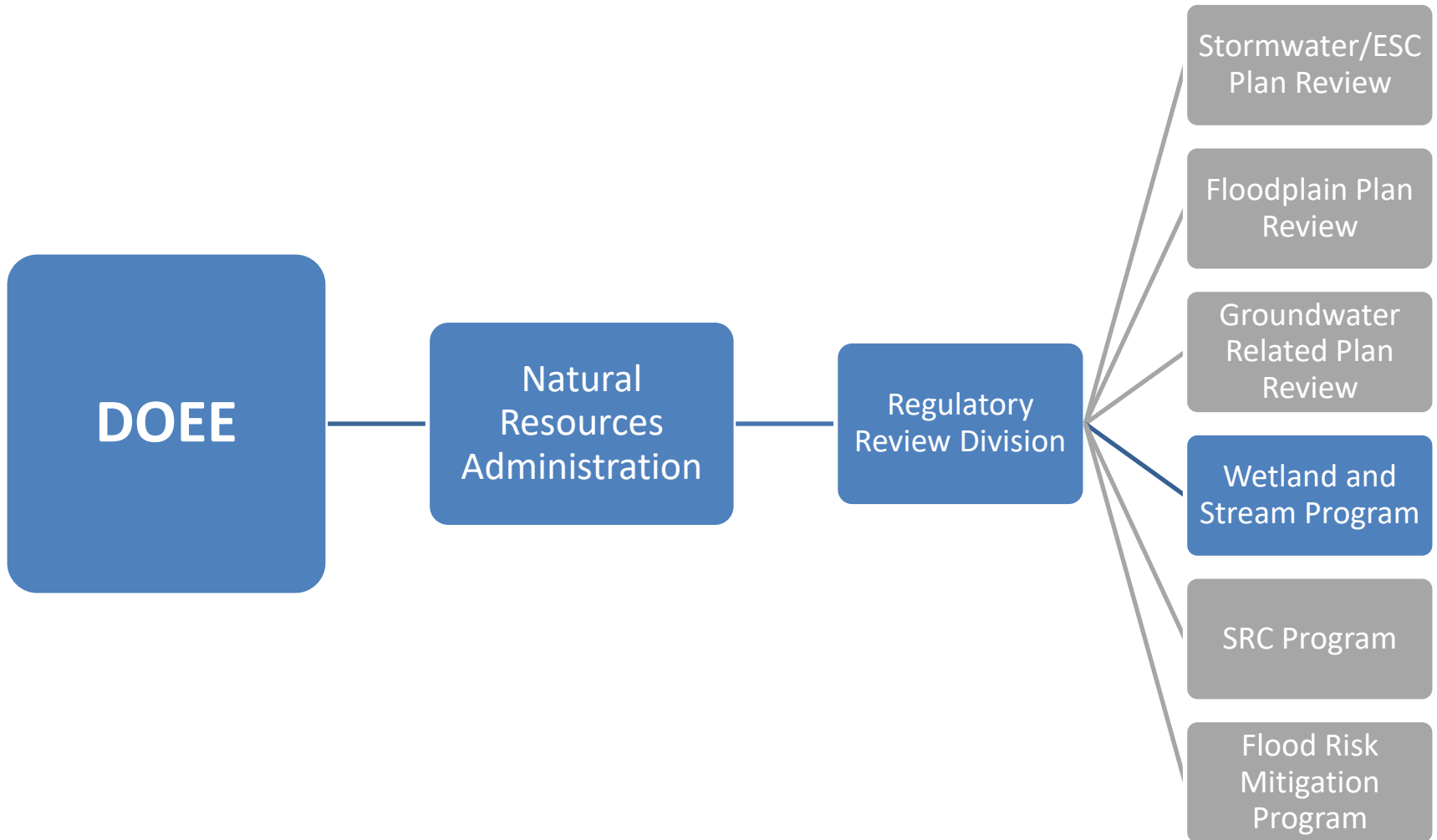


DISTRICT WETLAND AND STREAM REGULATORY PROGRAM



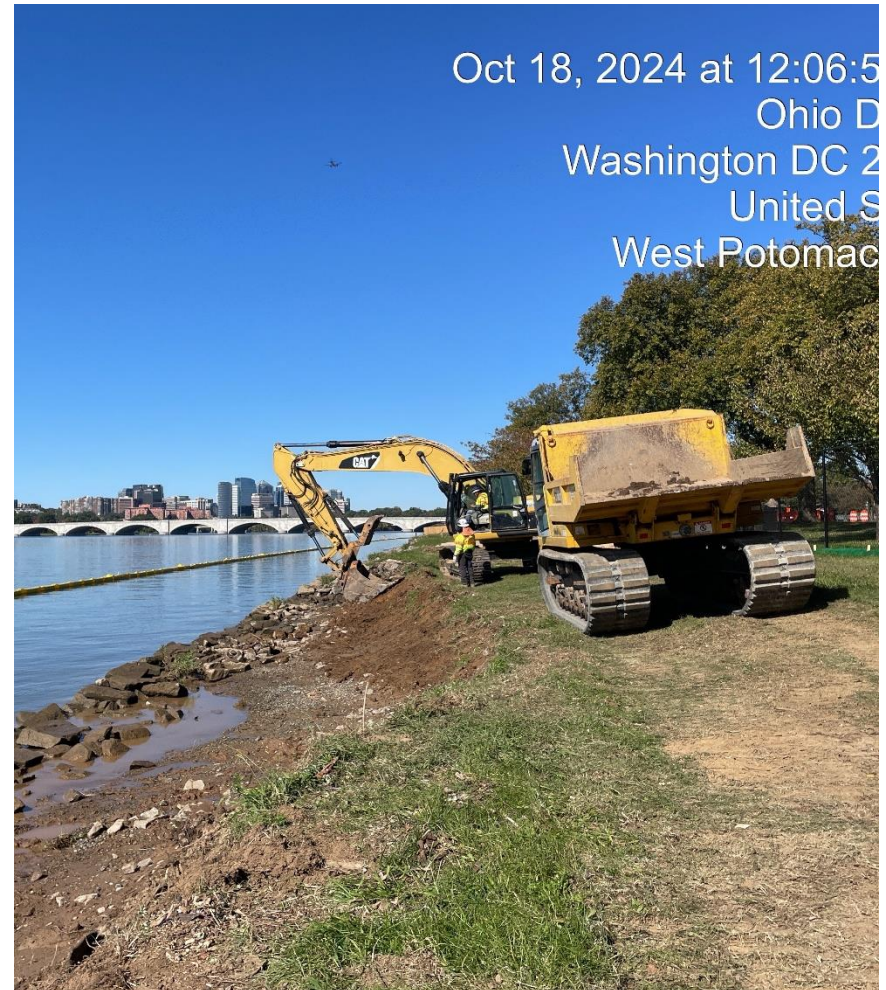
GOVERNMENT OF THE
DISTRICT OF COLUMBIA
MURIEL BOWSER, MAYOR

Wetland and Stream Program at DOEE



Successes – Compliance Crackdown

- New dedicated inspector
- Notifications to remind applicants/permittees of monitoring and reporting requirements
- Updated monitoring and reporting guidance
- New online submission of monitoring reports
- Updated WQC conditions based on field observations



Successes – Outreach and Education

- Audio tour of Kingman Island wetlands – WPDG
- Kingman Island Rangers
- Partnership with Living Classrooms – Frogwatch
- Trash clean-ups
- GZEP – green jobs training program for youth and young adults
- Kingman Island Family Day



Successes – River Terrace Wetland Enhancement

- 11-acre wetland on the Anacostia River bordering the River Terrace neighborhood
- Bay Program funded
- Invasive plant management
- Wild rice



Challenges – Aging Stormwater/Sewer Infrastructure in Streams

- Impervious surfaces + intense storms = extremely eroded stream channels
- Exposed infrastructure failures = leaking sewage
- Large land and stream disturbance to repair/replace
- Higher cost to relocate vs. replace
- More invasive species



Challenges – Development

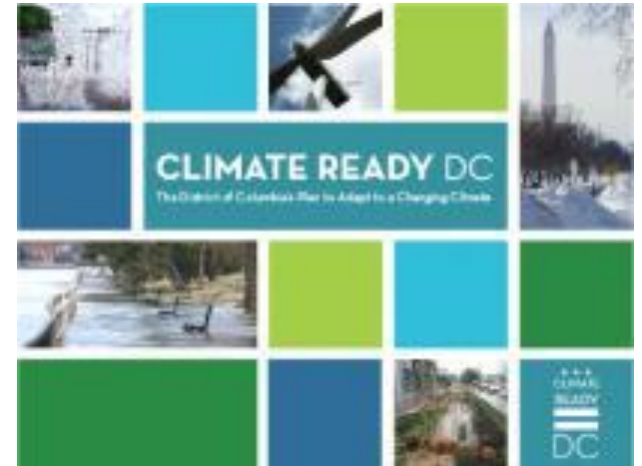


Challenges – Development



Climate Change

- Climate Ready DC 2.0
- Keep Cool DC
- Community Resilience Hubs
- Resilient Design Guidelines
- DC Flood Task Force
- Flood Risk Tool
- Updating mapping of wetland losses



Input/Advice – Beneficial Reuse

- Any case studies working with NPS on beneficial reuse?
- Has anyone successfully engaged with USACE to help navigate challenges with opposition to beneficial reuse?



Questions / Comments?

Jennifer Dietzen

Environmental Protection Specialist

Regulatory Review Division

Jennifer.dietzen@dc.gov

202-481-3942

