

# Delaware State Update

Division of Watershed Stewardship

---

Wetland Monitoring and  
Assessment Program



**Alison Rogerson – Environmental Scientist**



DELAWARE DEPARTMENT OF  
NATURAL RESOURCES AND  
ENVIRONMENTAL CONTROL

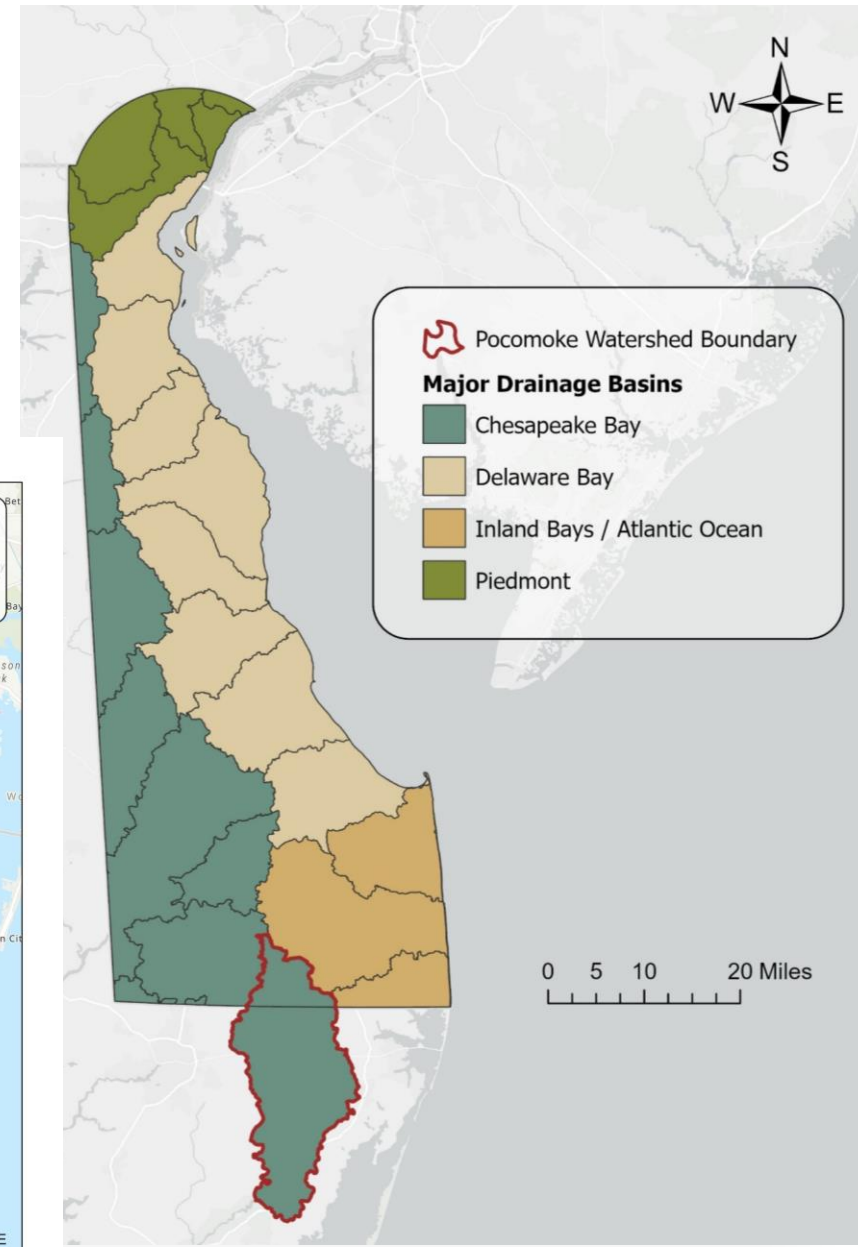
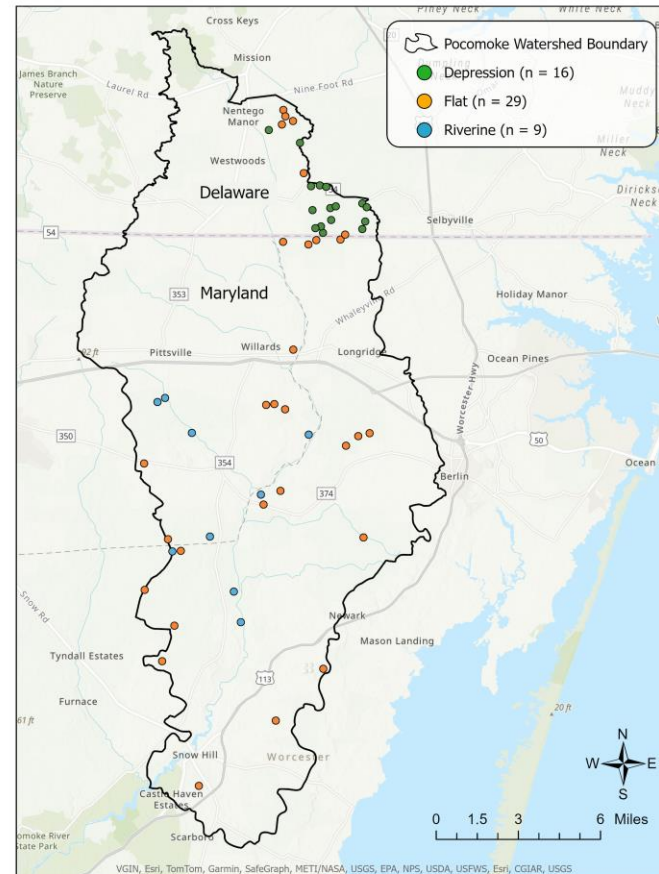
An aerial photograph of a vast marshland with a complex network of winding waterways. The water is a light, silty grey color, contrasting with the vibrant green of the marsh vegetation. Several small boats are visible on the water in the lower-left quadrant. The overall scene is a natural, undisturbed landscape.

# Marsh Migration Model & Planning (presentation this afternoon!)



# Pocomoke Watershed Wetland Condition Report

- Sampled in 2022
- Nontidal wetland condition assessments – level 2
- No tidal wetlands sampled
- Last watershed assessment statewide!
- Good condition
- Report and report card due out by New Year.



# Phase 1: Containment – October 2023 to February 2024

- Exterior: triple log stack 1,310 lf
- Interior: single log segments 780 lf
- Coir matting, woodens stakes
- Triple oyster shell bag toe



## Phase 2: Dredging – July 2024 to current (Feb. 28)

- Logged >100 dredging hours
- Strictly limited to tide schedule
- Dredging ~100ft/week
- Accumulated ~1ft sediment inside to date



# Phase 2: Dredging – July 2024 to current (Feb. 28)

- Constant monitoring esp turbidity
- Inspections and damage repair
- Top log loss due to exposure?
- Volunteer plants on logs
- Public interest





# Water Family Fest // Native Plant Sale

2024



Saturday  
May 4

10 am  
to  
2 pm

James Farm  
Ecological  
Preserve  
Ocean View, DE

- 4<sup>th</sup> year co-hosted with NEP
- 4 local native nurseries
- 30 EE exhibitor displays
- Live music
- Food & drink
- Demonstrations
- 375 attendees



DELAWARE DEPARTMENT OF  
NATURAL RESOURCES AND  
ENVIRONMENTAL CONTROL



DELAWARE  
CENTER FOR THE  
INLAND BAYS  
preserve • protect • restore



DELAWARE DEPARTMENT OF  
NATURAL RESOURCES AND  
ENVIRONMENTAL CONTROL



# Freshwater Wetland Protection Program update

---

- Produced a report to Gov and Legislature of program options, costs, staff, etc. Sept. 2022
- Created addendum to said report post Sackett decision Sept. 2023
- Completed GIS analysis of wetlands excluded from federal regulation post Sackett (*attend this afternoon's panel!*)
- Draft bill being circulated and edited spring/summer 2024
- Two Senator-led 'discussion sessions' in early summer 2024
- Tabled a vote by session end in June; session returns Jan. 2025
- Senator-led 'discussion session' held yesterday

Stay tuned!



Thank You!

[alison.rogerson@delaware.gov](mailto:alison.rogerson@delaware.gov)

Follow us!



@DNRECwetlands



DELAWARE DEPARTMENT OF  
NATURAL RESOURCES AND  
ENVIRONMENTAL CONTROL